

CPTED Experiences in Nelson

- David Jackson, Principal Adviser – City Development
- Lisa Gibellini, Planning Adviser

ICA Regional CPTED Forum, Nelson, 21 June 2011



Introduction

- Awareness of CPTED
- Some issues
- Projects
- Things underway



CPTED in Nelson

- We are 'on a journey'
- Nelson Resource Management Plan (our City Plan), released 1996
- Safe City Adviser – Ingrid Beach



The Journey

- Tricia Austin – School of Architecture & Planning (x2 in-house courses)
- Urban Design Protocol
- Urban Design Action Plan



Urban Design Action Plan

- Urban Design Champion
- Seminars & training – staff, councillors & practitioners
- Urban Design Panel
- Changes to Nelson Resource Management Plan



Public Places

- Parks
- Central Business District (CBD)
- Walkways & Cycleways
- Residential & Streetscape













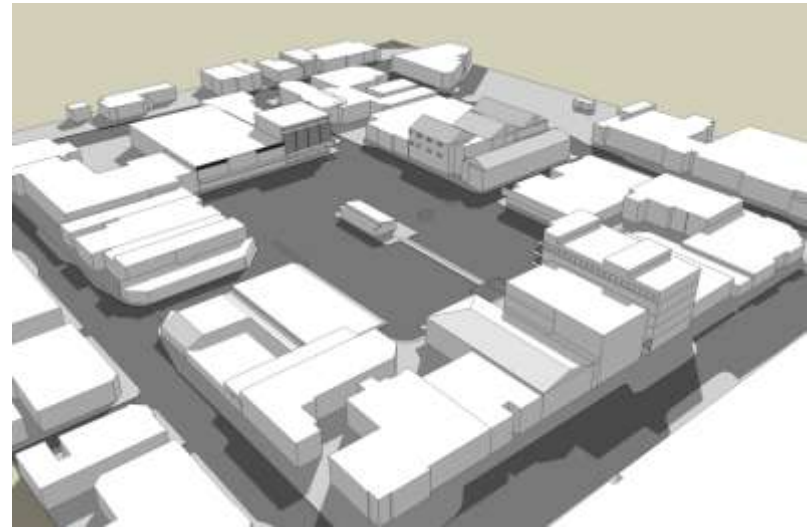


Also – Council planting and maintenance guidelines



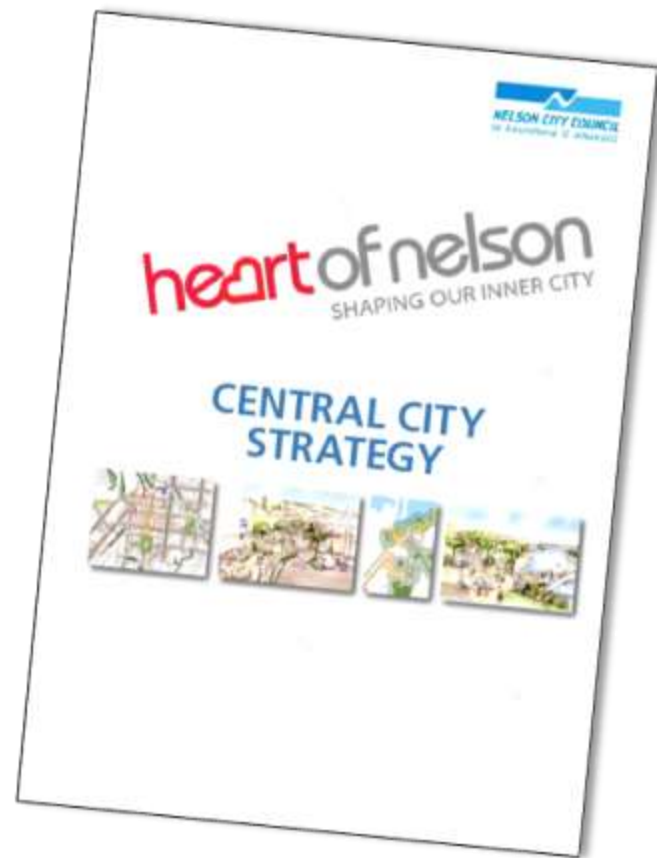
CBD (City Centre)

- Challenges
 - Carparks
 - Church Hill
 - Laneways
 - Late night drinking



Heart of Nelson Strategy

- Vibrant, attractive CBD
 - Design & Amenity
 - Activities
 - Connectivity
 - Legibility
 - Safety



Heart of Nelson - safety

- Good design
- Public presence & supervision



Heart of Nelson - safety

- More people living in, or close to, CBD
- More activities – more people of 'good intent' around



Heart of Nelson - safety

- Incorporating CPTED consideration into Nelson Resource Management Plan
- Safer & better public toilets
- Lighting
- CCTV



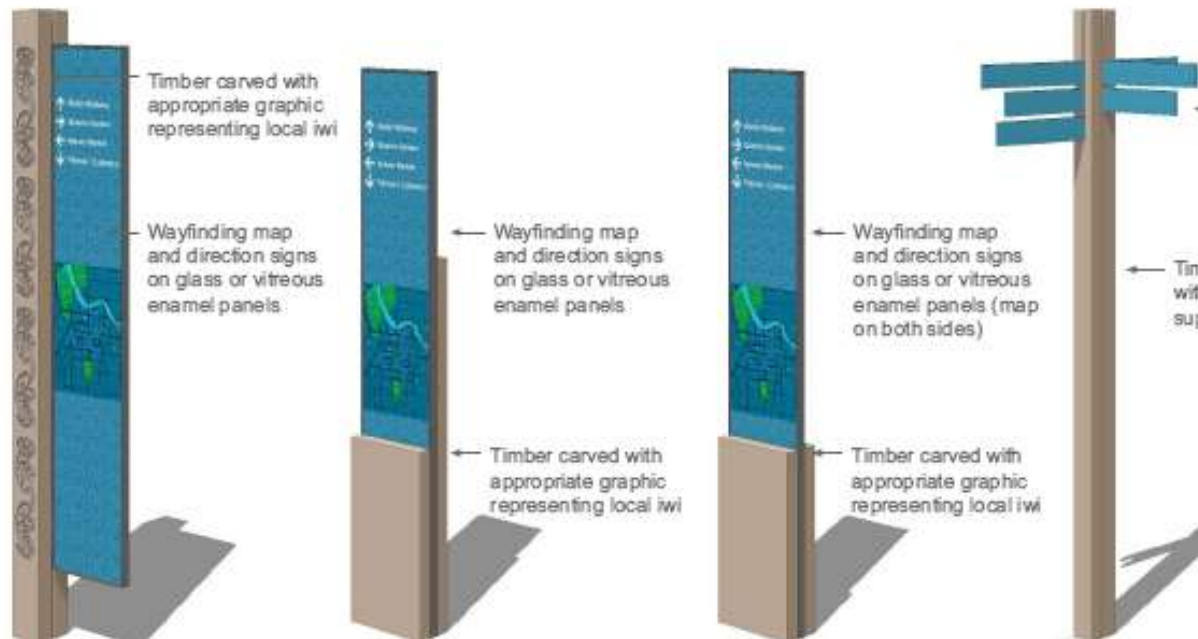
Heart of Nelson - safety

- Upgrades e.g. Bridge Street bar area



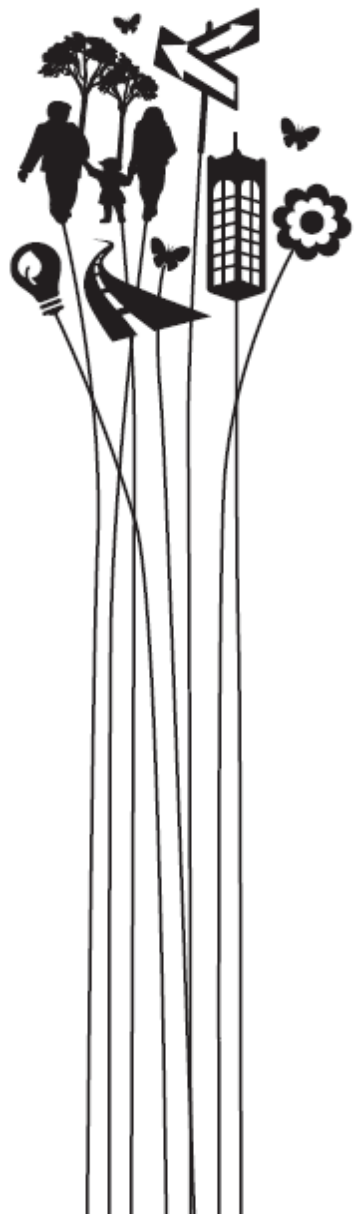
Heart of Nelson - safety

- Wayfinding /signage



Heart of Nelson - safety





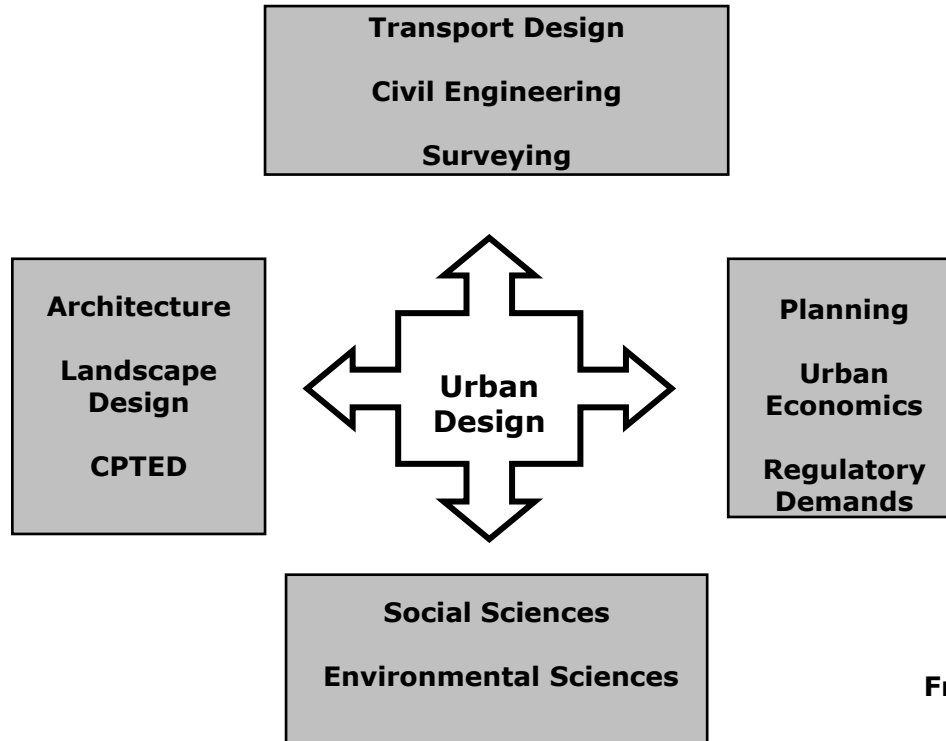
From good practice to regulation

Plan Change 14 to the Nelson
Resource Management Plan

What does Urban Design mean for Nelson?

The Process

The issue of good design is not some abstract ideal, its about creating the right conditions to make places work (CABE 2003).



From the NCC Urban Design Protocol Action Plan 2008



District Wide Objectives and Policies

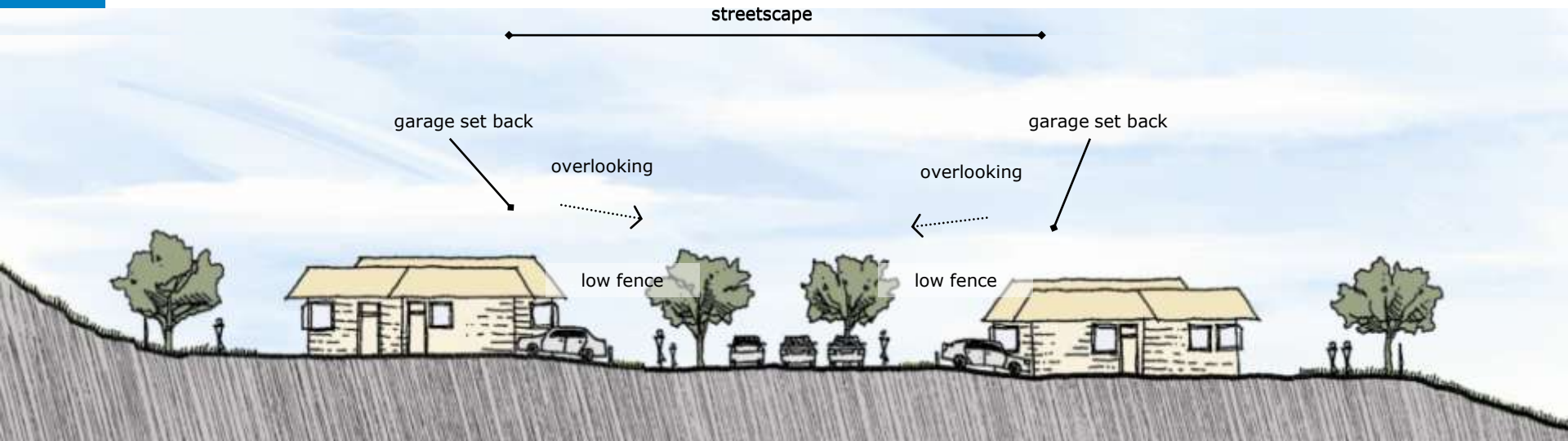


- Sets design framework
- NCC CPTED Guidelines as 'method'.

Regulation in the Residential Zone

- Front Yards
- Front Fences
- Road design



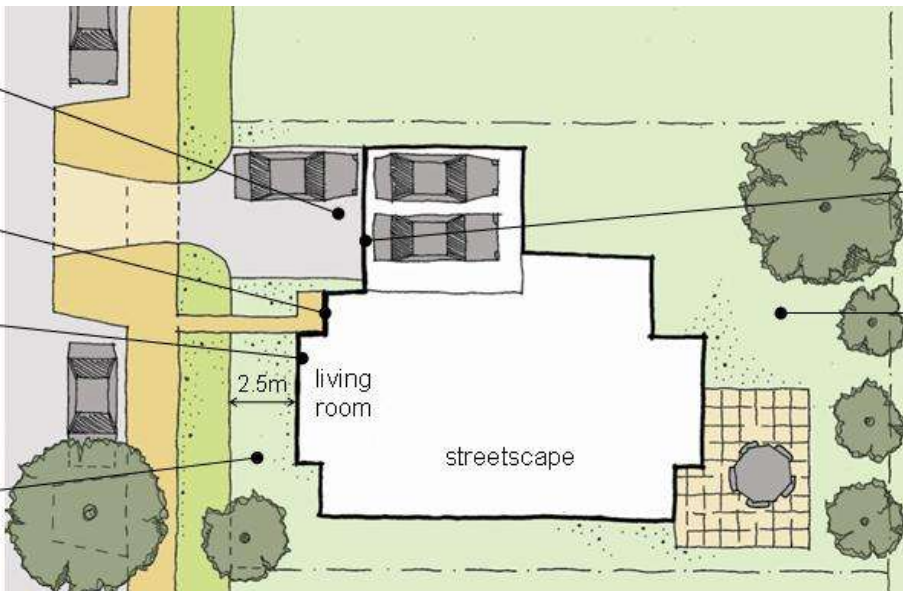


reverse manoeuvring onto the street

visible entrance

living room with window towards the street

landscaped front yard



garage set back

private rear yard away from the street

No More Missed Opportunities



No more of this



More like this



No more of this



More like this



No more of this:



The way we were:



