



SOUTH AUSTRALIA POLICE
KEEPING SA SAFE

South Australia Police & CPTED

“Making a Difference”

Sergeant Natalie Warburton

State Crime Prevention Branch



**Government
of South Australia**



SOUTH AUSTRALIA POLICE
KEEPING SA SAFE

South Road Tram Overpass



Before



Images courtesy of the Department for Transport, Energy and Infrastructure



**Government
of South Australia**



SOUTH AUSTRALIA POLICE
KEEPING SA SAFE

South Road Tram Overpass



**Government
South Australia**



SOUTH AUSTRALIA POLICE
KEEPING SA SAFE

South Road Tram Overpass

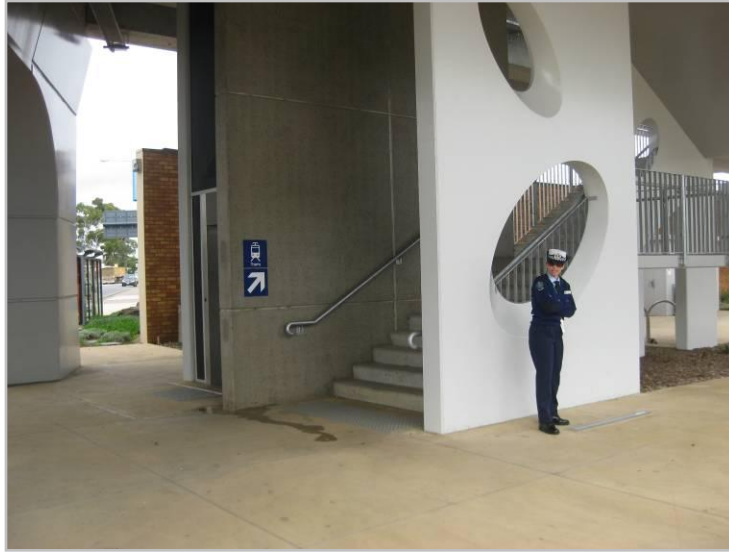


**Government
of South Australia**



SOUTH AUSTRALIA POLICE
KEEPING SA SAFE

South Road Tram Overpass

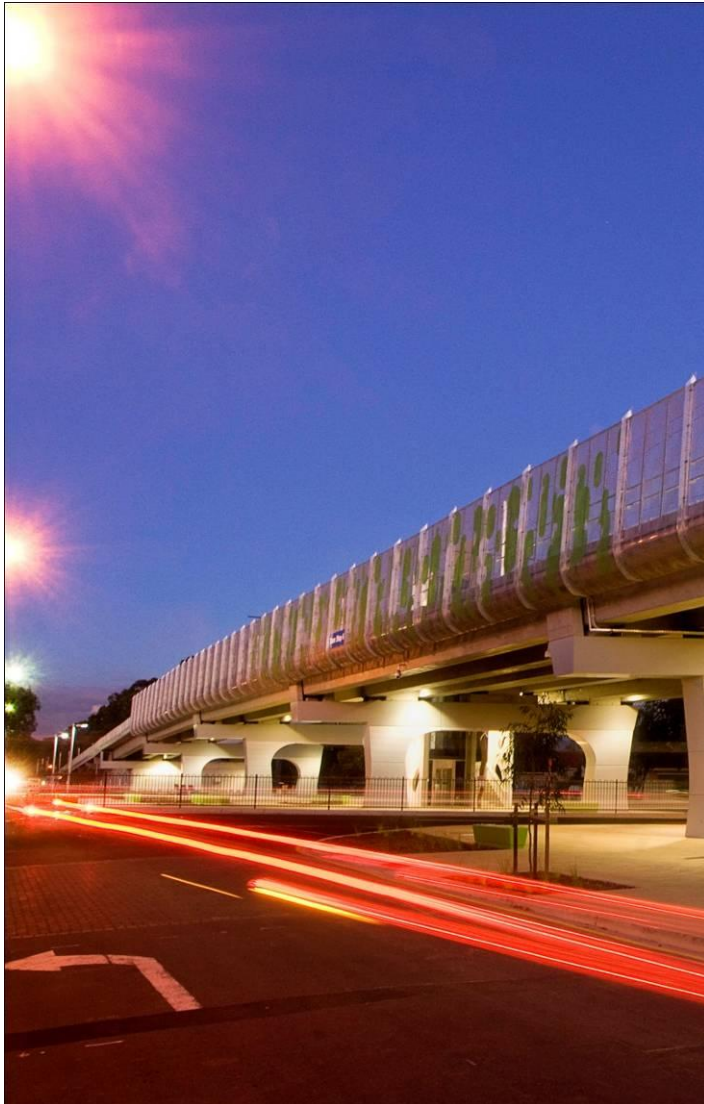


Government
of South Australia



SOUTH AUSTRALIA POLICE
KEEPING SA SAFE

South Road Tram Overpass



Images courtesy of the Department for Transport, Energy and Infrastructure



**Government
of South Australia**



SOUTH AUSTRALIA POLICE
KEEPING SA SAFE

Shared bicycle path

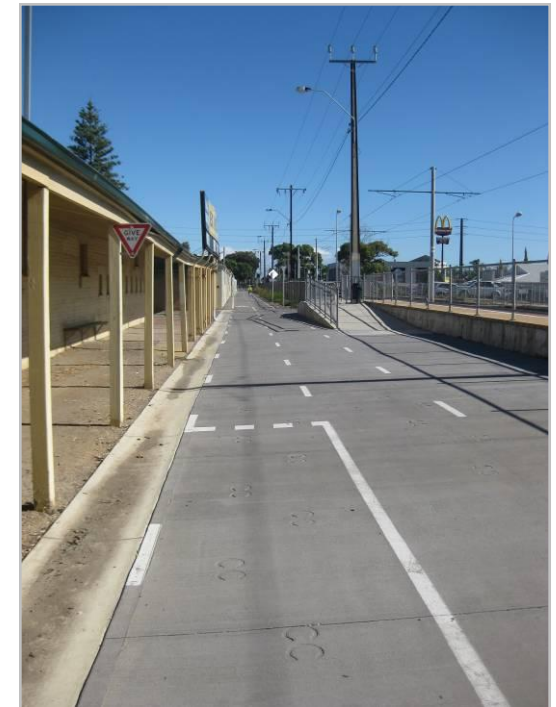


Government
of South Australia



SOUTH AUSTRALIA POLICE
KEEPING SA SAFE

Shared bicycle path



**Government
of South Australia**



SOUTH AUSTRALIA POLICE
KEEPING SA SAFE

Shared bicycle path



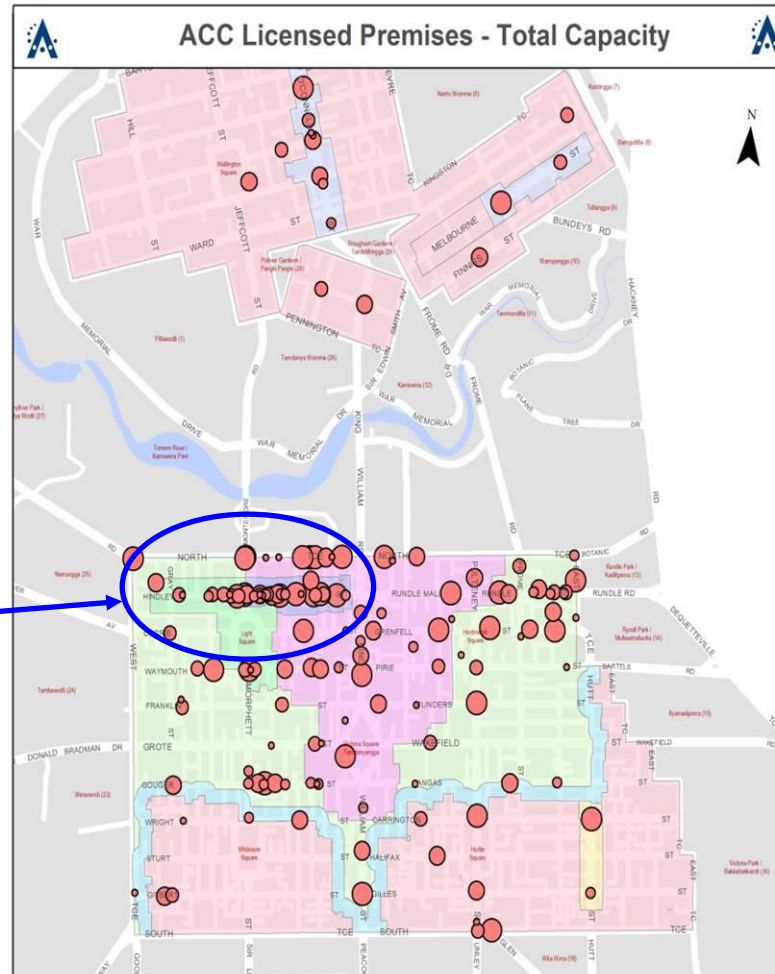
**Government
of South Australia**



SOUTH AUSTRALIA POLICE
KEEPING SA SAFE

West End Safety Audits

**West End
Precinct**





SOUTH AUSTRALIA POLICE
KEEPING SA SAFE

West End Safety Audits



Information and photos courtesy of Jennifer West, Adelaide City Council



**Government
of South Australia**



SOUTH AUSTRALIA POLICE
KEEPING SA SAFE

West End Safety Audits



Before

2007 = 5.9 or 3rd most unsafe site
2008 = 4.9 or 9th most unsafe site
2009 = 3.6 or 31st most unsafe site



After

Blyth Street



**Government
of South Australia**



SOUTH AUSTRALIA POLICE
KEEPING SA SAFE

West End Safety Audits

Rosina Street

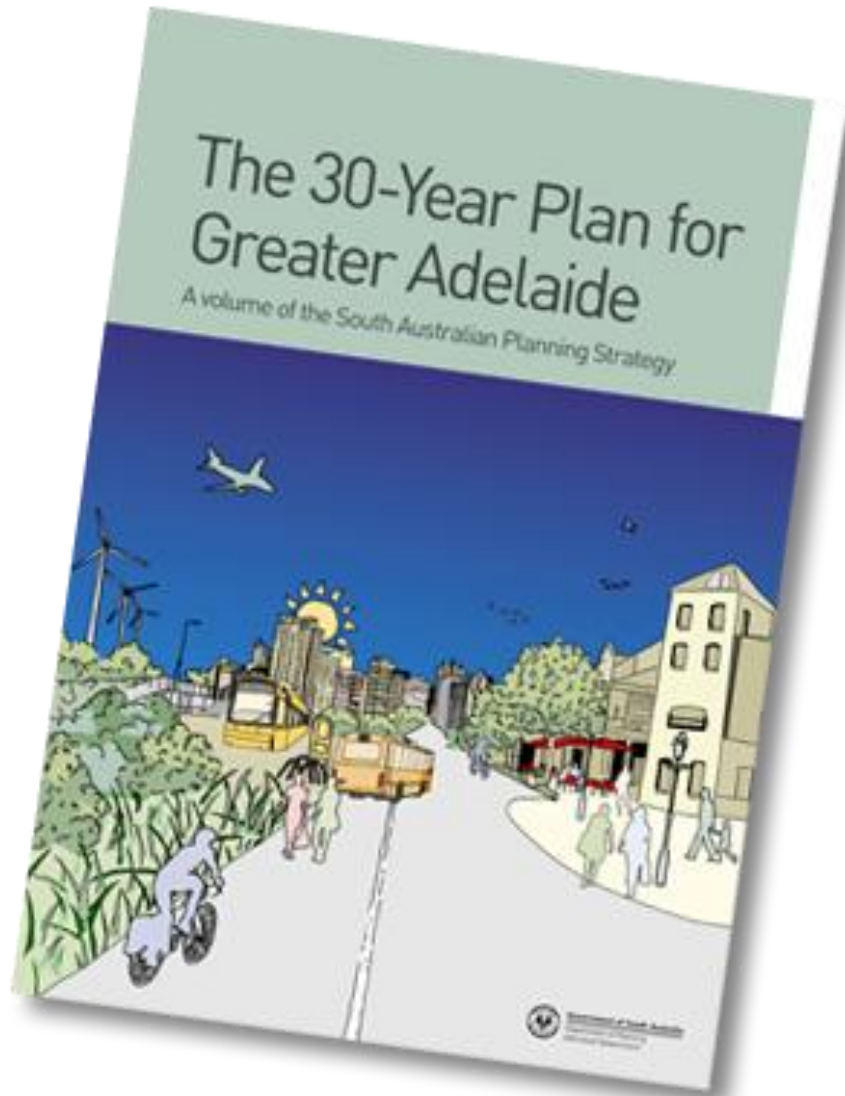
2007 = 5.9 safety ranking
2008 = 4.5 safety ranking
2009 = 4.1 safety ranking
2010 = 3.1 safety ranking



**Government
of South Australia**



SOUTH AUSTRALIA POLICE
KEEPING SA SAFE



**Government
of South Australia**



SOUTH AUSTRALIA POLICE
KEEPING SA SAFE

12 Principles of the Plan

1. A compact and carbon efficient city
2. Housing diversity and choice
3. Accessibility
4. A transit-focused and connected city
5. World-class design and vibrancy
6. Social inclusion and fairness
7. Heritage and character
- 8. Healthy, safe and connected communities**
9. Affordable living
10. Economic growth and competitiveness
11. Climate change resilience
12. Environmental protection

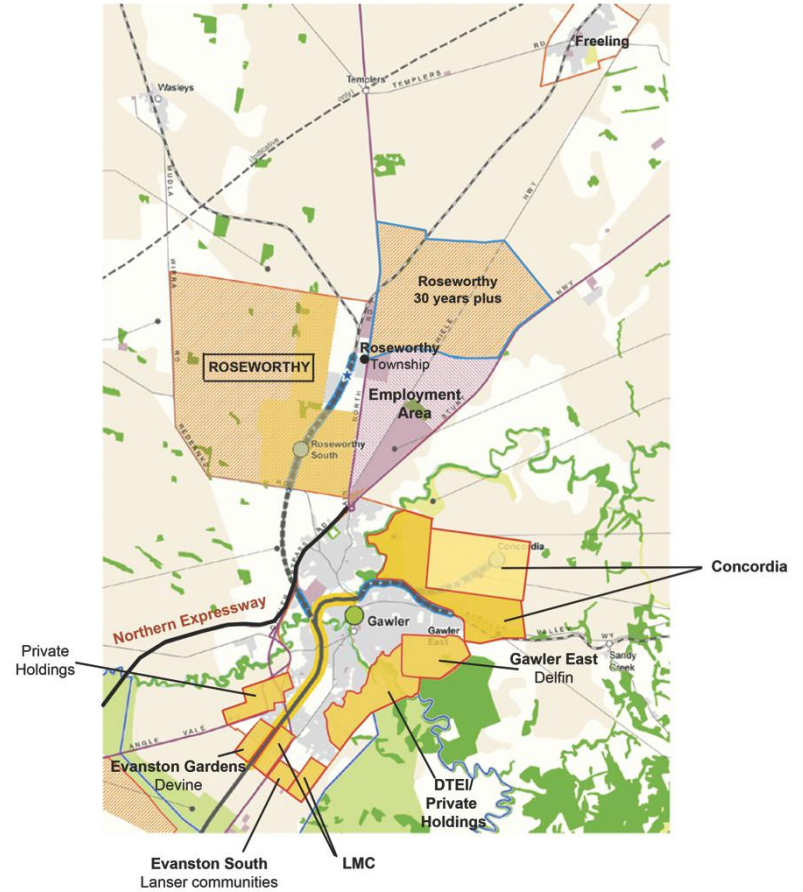
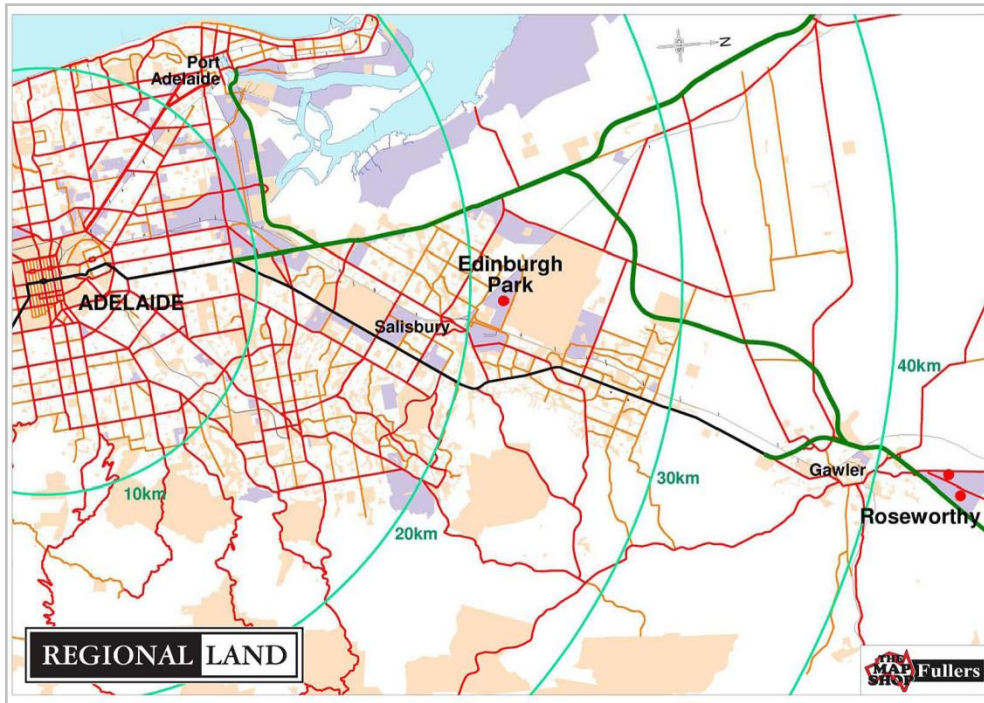


Government
of South Australia



SOUTH AUSTRALIA POLICE

KEEPING SA SAFE



Source: Map is from the 30-Year Plan for Greater Adelaide, Modified on 17.03.11.





SOUTH AUSTRALIA POLICE
KEEPING SA SAFE



Government
of South Australia