

# Urban Design and CPTED: some Australian reflections

**John Byrne**

Consultant in Urban Design and Planning  
and

Adjunct Professor in Urban Design  
Queensland University of Technology

# Urban Design

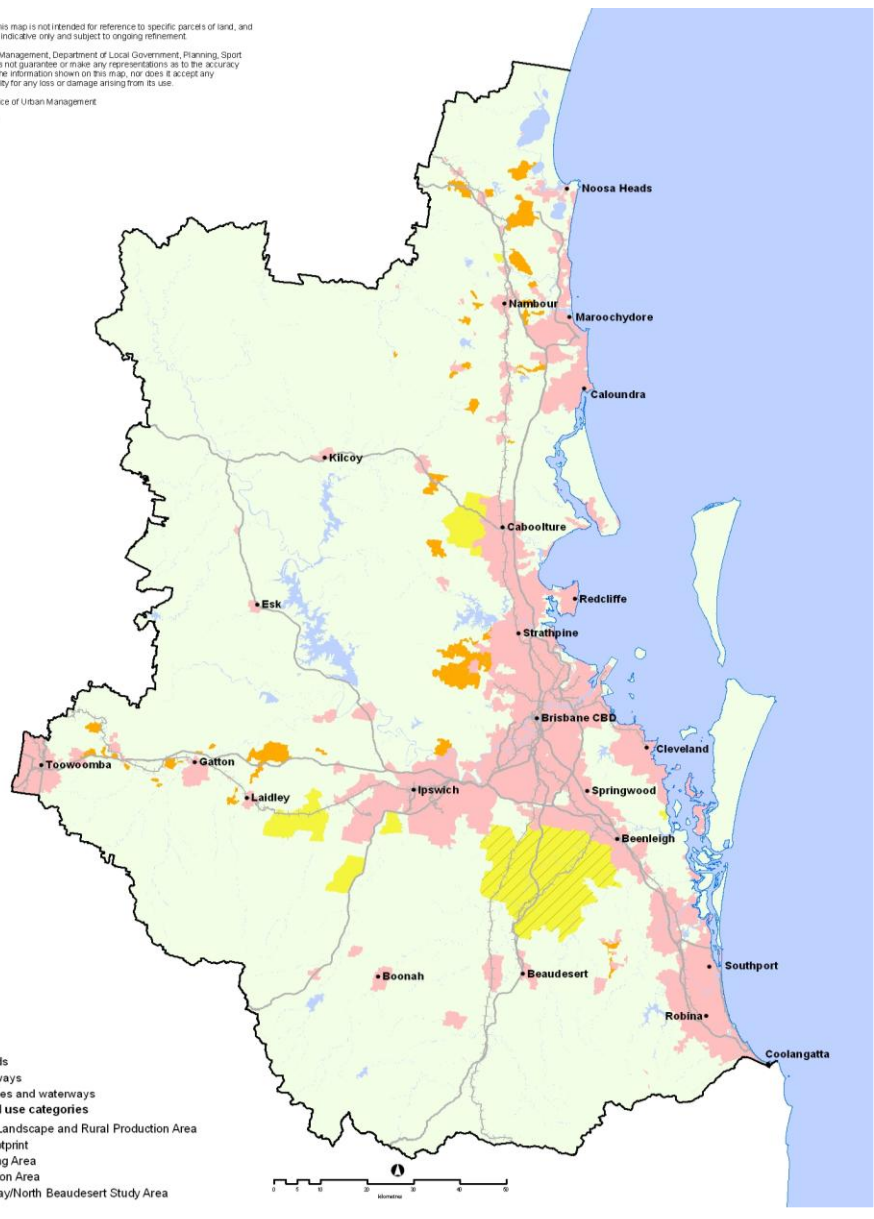


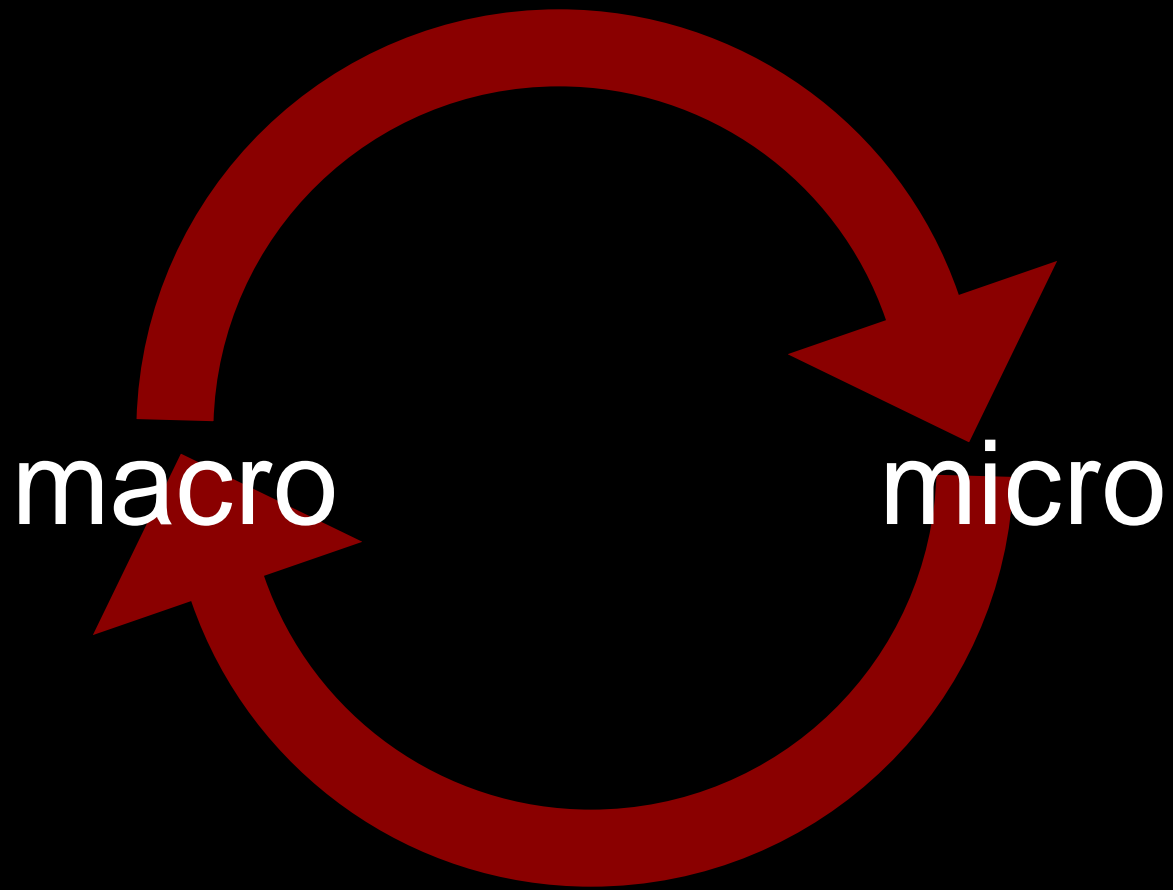
The information on this map is not intended for reference to specific parcels of land, and should be treated as indicative only and subject to ongoing refinement.

The Office of Urban Management, Department of Local Government, Planning, Sport and Recreation, does not guarantee or make any representations as to the accuracy or completeness of the information shown on this map, nor does it accept any responsibility or liability for any loss or damage arising from its use.

Sources include: Office of Urban Management

Version: June 2005





# The basis for CPTED theory

---

The proper *design* and effective *use* of the built environment can lead to a reduction in the incidence and fear of crime, an improvement in the quality of life, and enhanced profitability for business.

Adapted from Crowe, 1992



The Fundamentals of CPTED



# What's important in CPTED?

- the **design** of the place / environment / building / precinct / neighbourhood ....
- how it's **used**
- **peoples'** reactions to it

# So ....the **objectives** for CPTED?

**Design** and **use** environments to:-

- support desired behaviours
- enhance intended functionality
- reduce undesired behaviours
- place potential offenders at a disadvantage



# Crime Prevention through Environmental Design

## Guidelines for Queensland



### Part A: Essential features of safer places



Queensland  
Government

# Contents

Foreword	2
<b>Chapter One</b>	
WHAT IS THIS CPTED THING ALL ABOUT?	3
<b>Chapter Two</b>	
CPTED IS NOT A NEW IDEA AND HOW TO APPROACH IT	5
<b>Chapter Three</b>	
<b>IMPORTANT PRINCIPLES AND GUIDING IDEAS</b>	
1 Surveillance	8
2 Legibility	9
3 Territoriality	11
4 Ownership	12
5 Management	13
6 Vulnerability	14
<b>Chapter Four</b>	
CPTED AND THE CHANGING QUEENSLAND	16
<b>Chapter Five</b>	
CPTED IN URBAN ENVIRONMENTS: EVOLVING DESIGN IDEAS	19
<b>Chapter Six</b>	
<b>CPTED GUIDELINES FOR SPECIFIC URBAN ENVIRONMENTS</b>	
1 The Design of Neighbourhoods and Precincts	30
2 The Design of Buildings	31
3 The Design of the Public Realm	33
4 The Design of Centres	34
5 The Design of Pedestrian and Cyclist Services	36
6 The Design of other Domains	37
<b>Chapter Seven</b>	
<b>SPECIFIC APPLICATIONS</b>	
1 Automatic Teller Machines	39
2 Service Stations	40
3 Night-time Entertainment Areas	40
4 Public Telephones	40
5 Public Toilets	40
6 Institutional Settings (Hospitals, Universities, Schools)	41
7 Skate Park Facilities	41
8 Car Parks	41
9 Public Transport Settings	42
10 Lighting	42
<b>Chapter Eight</b>	
<b>SOME QUEENSLAND EXAMPLES</b>	44
Definitions	46
References and Further Resources	47
Acknowledgements	47

Introductory Essays

Demographic Essay

Urban Design Essay

CPTED Principles and Actions

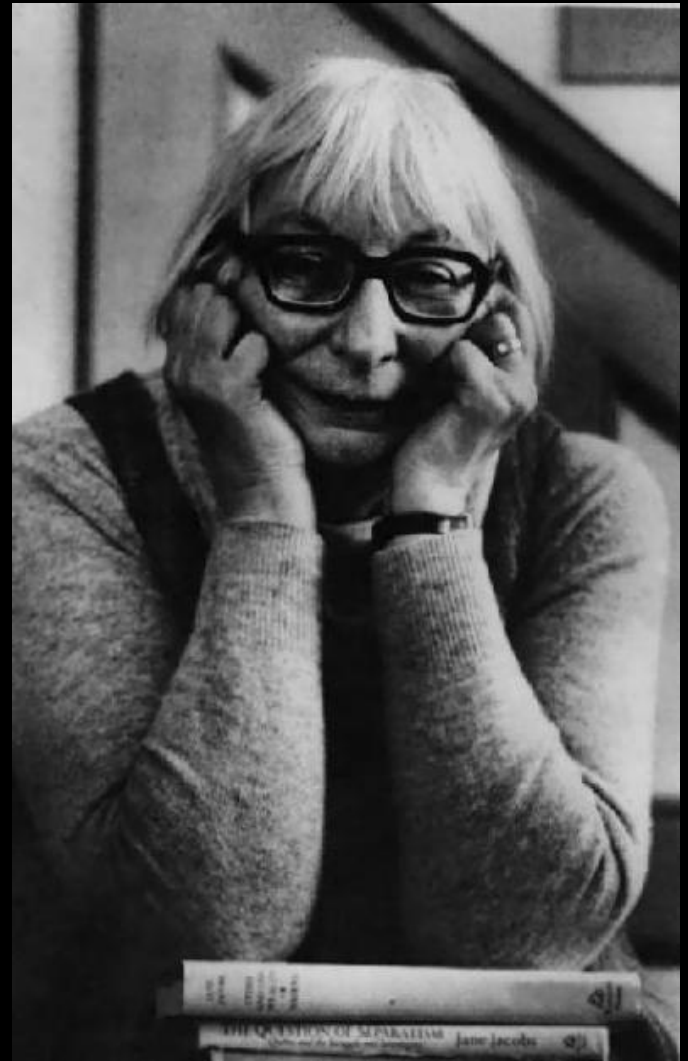

CPTED Principles applied to Urban Design Contexts



JANE  
JACOBS

THE  
DEATH  
AND LIFE  
OF GREAT  
AMERICAN  
CITIES

FOREWORD BY  
THE AUTHOR



The new **Queensland Guidelines** consider  
CPTED principles and guiding ideas  
in terms of:

surveillance

legibility

territoriality

ownership of the outcomes

management

vulnerability



They apply these CPTED principles to a range of **urban design contexts** including:

**neighbourhoods and precincts**

**buildings**

**the public realm**

**centres**

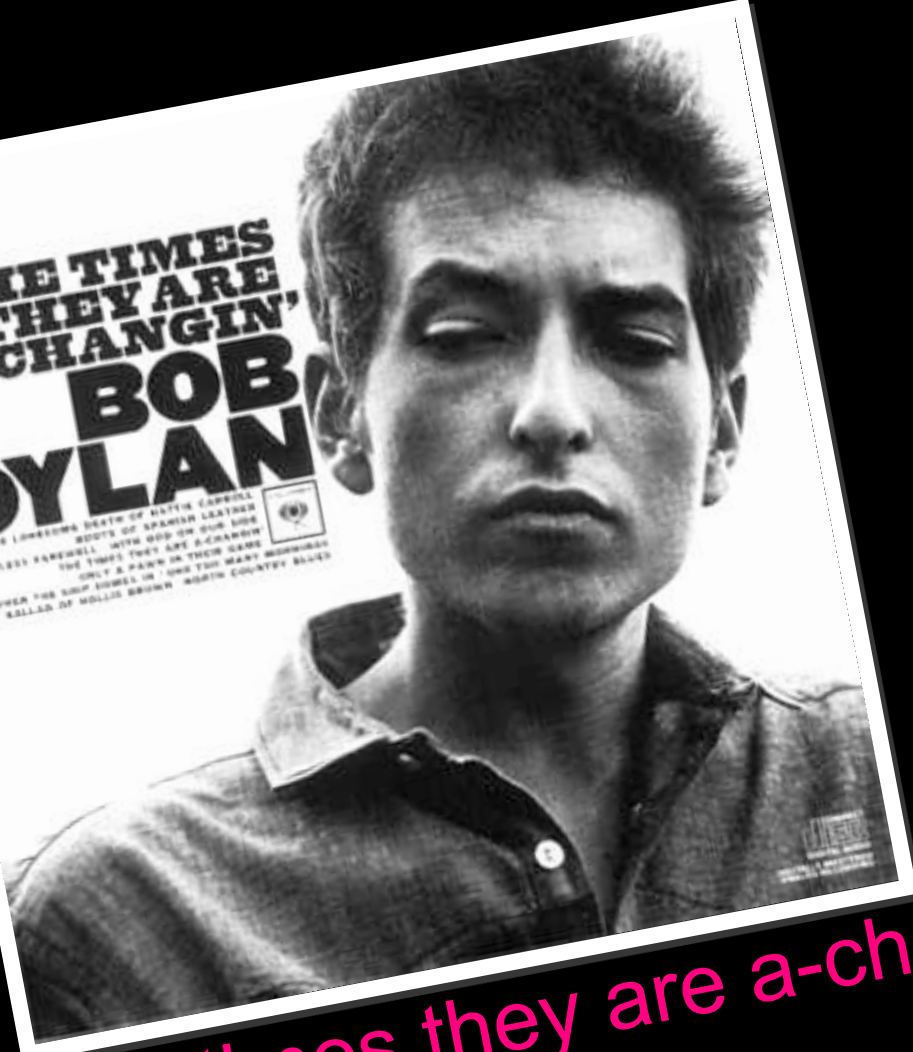
**pedestrian and cyclist systems**

and, in lesser detail, to a wide variety of others.

January 1964

# THE TIMES THEY ARE A-CHANGIN' BOB DYLAN

THE LONELY DEATH OF BLAKE CARROLL  
ROOTS OF SPANISH LEATHER  
WHITTLED FAREWELL WITH GOD ON OUR SIDE  
THE TIMES THEY ARE A-CHANGIN'  
ONLY A PAWSE IN THEIR GAME  
WHEN THE SUN SHINES IN LOVE THE GREAT MORNIN'  
KELLS OF MOLLIE BRUSH NORTH COUNTRY BLUES



The times they are a-changin' ...

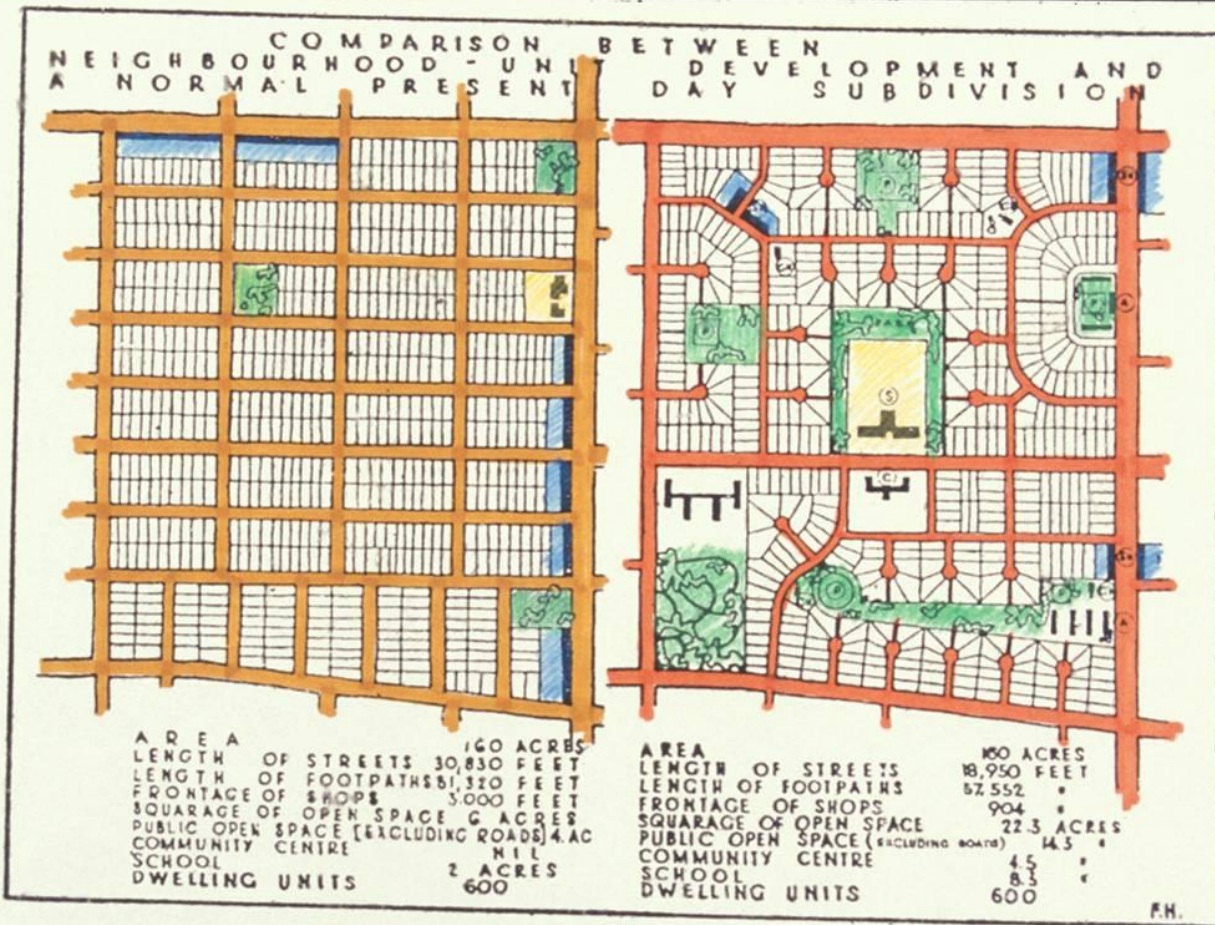
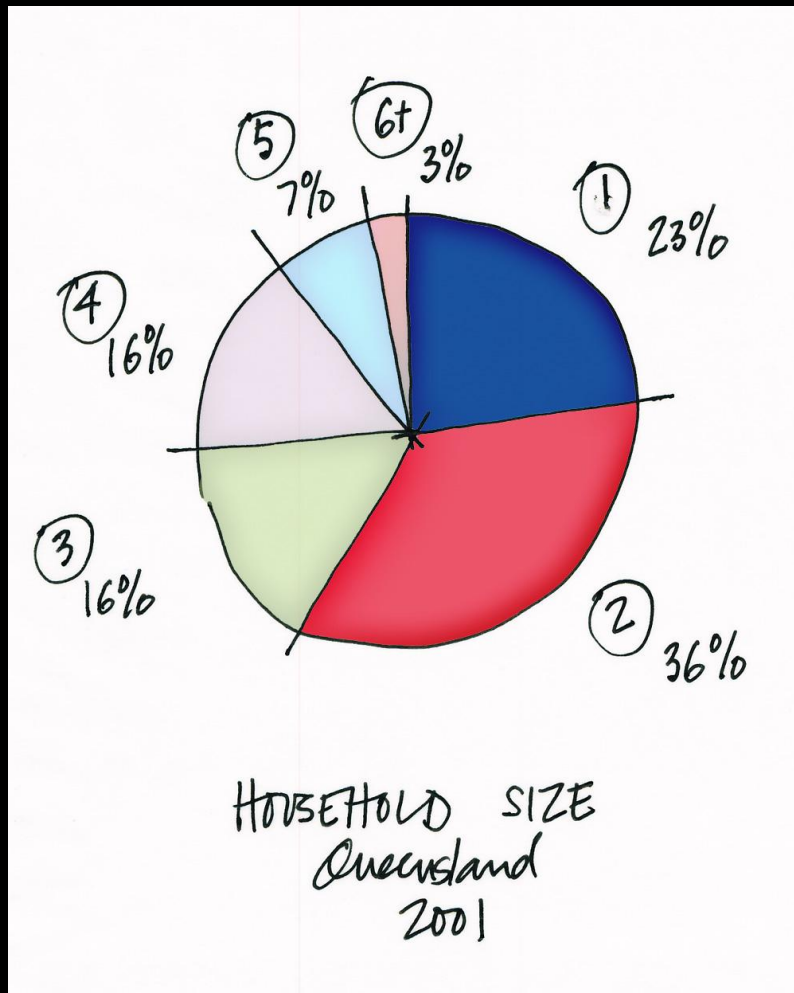
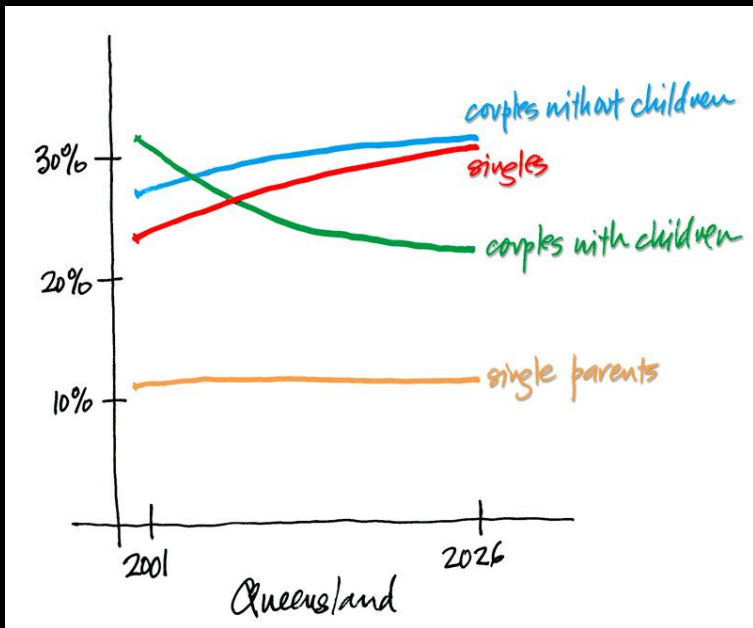


Fig. 72. Comparison of planned neighbourhood development (on right) and typical Australian form of land subdivision (on left)

*Brown + Shenard, Town + Country Planning, (M.V.P. 1951)*



# Housing Choice

is expanding dramatically.

# Housing Mix

is much more widely accepted.

What does it mean for CPTED practice?





PETRIE & PINE



A totally  
planned  
community for  
over 700 families



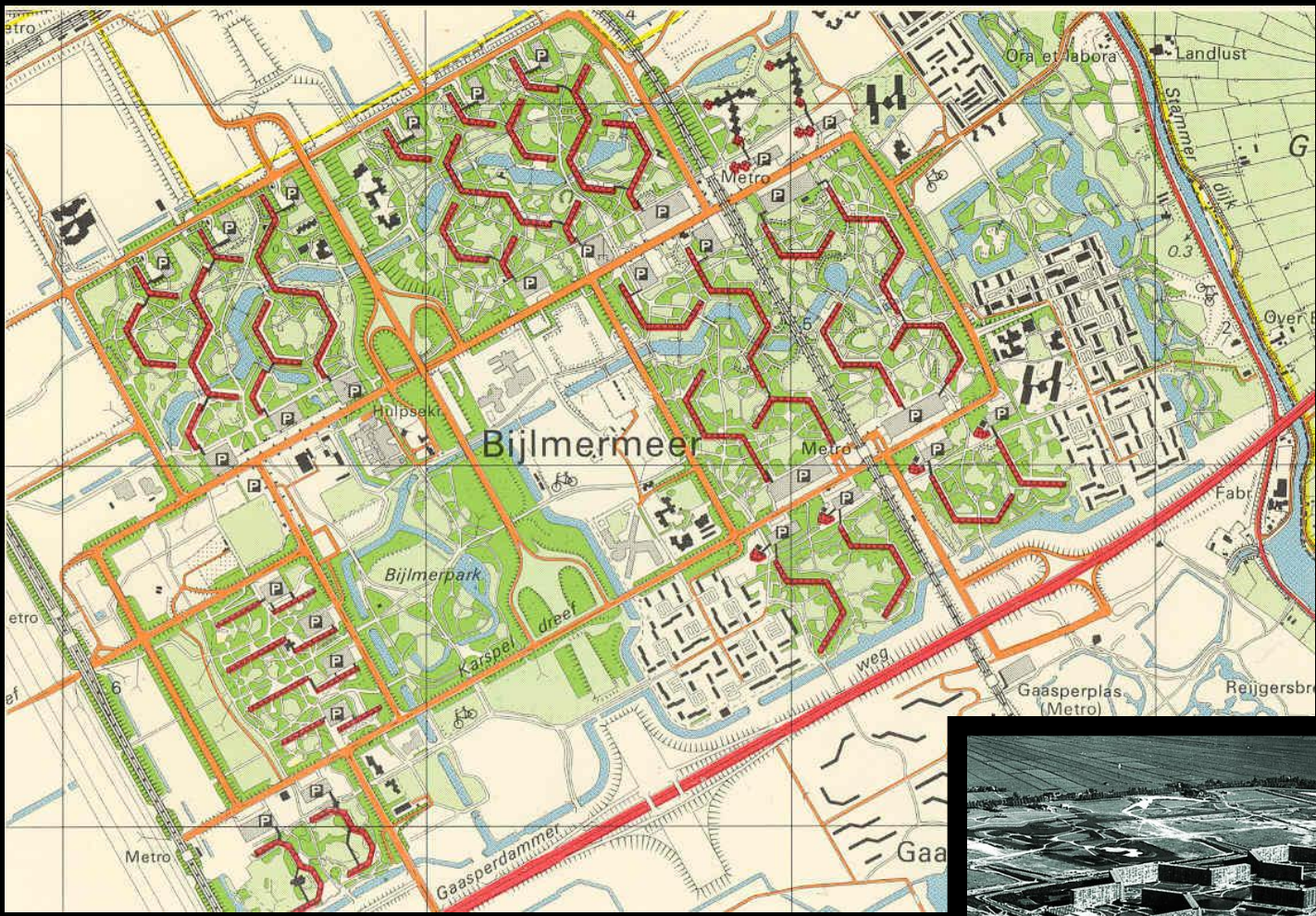
AVJennings















“The 13000 unit Bijlmeerpark New Town is the largest housing disaster built anywhere... As many as 1200 families share the entry to a single building... Residents are terrified to move through the grounds and the interiors of the buildings...”

Oscar Newman, Community of Interest (1975, 1981) p301





ALOMER 26



Equally, CPTED thinking and practice  
need surely to continue to evolve  
in response to  
**the changing nature of society.**

The new Queensland Guidelines discuss, for example:

- the ageing of the population
- the nature of households
- the form of urban housing
- the institutional provision of housing
- the nature of the workforce and jobs
- the nature of communications and lifestyles
- the sense of community

The new Queensland Guidelines consider  
CPTED principles and guiding ideas  
in terms of:

surveillance

legibility

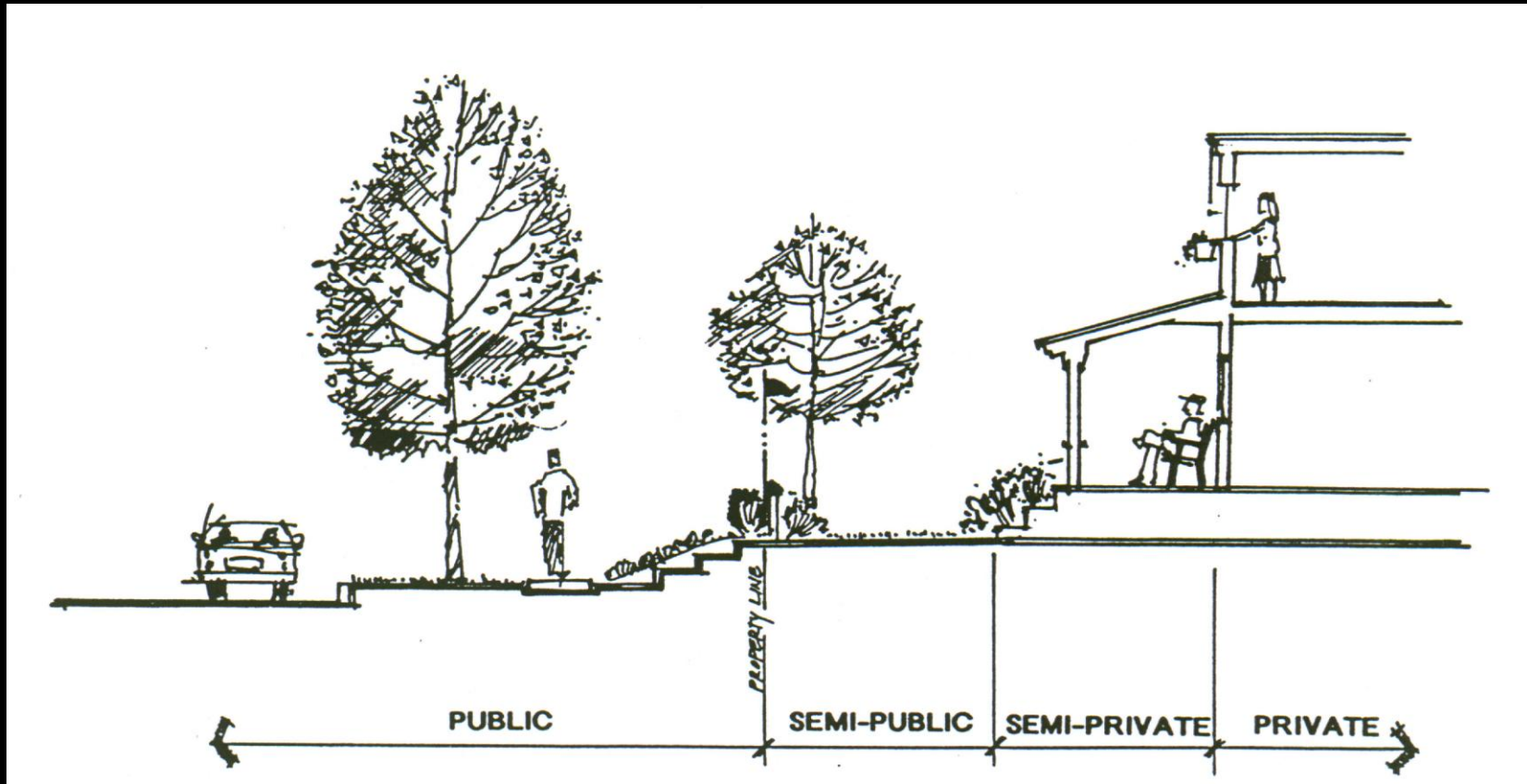
**territoriality**

ownership of the outcomes

management

vulnerability

# Transition Zones

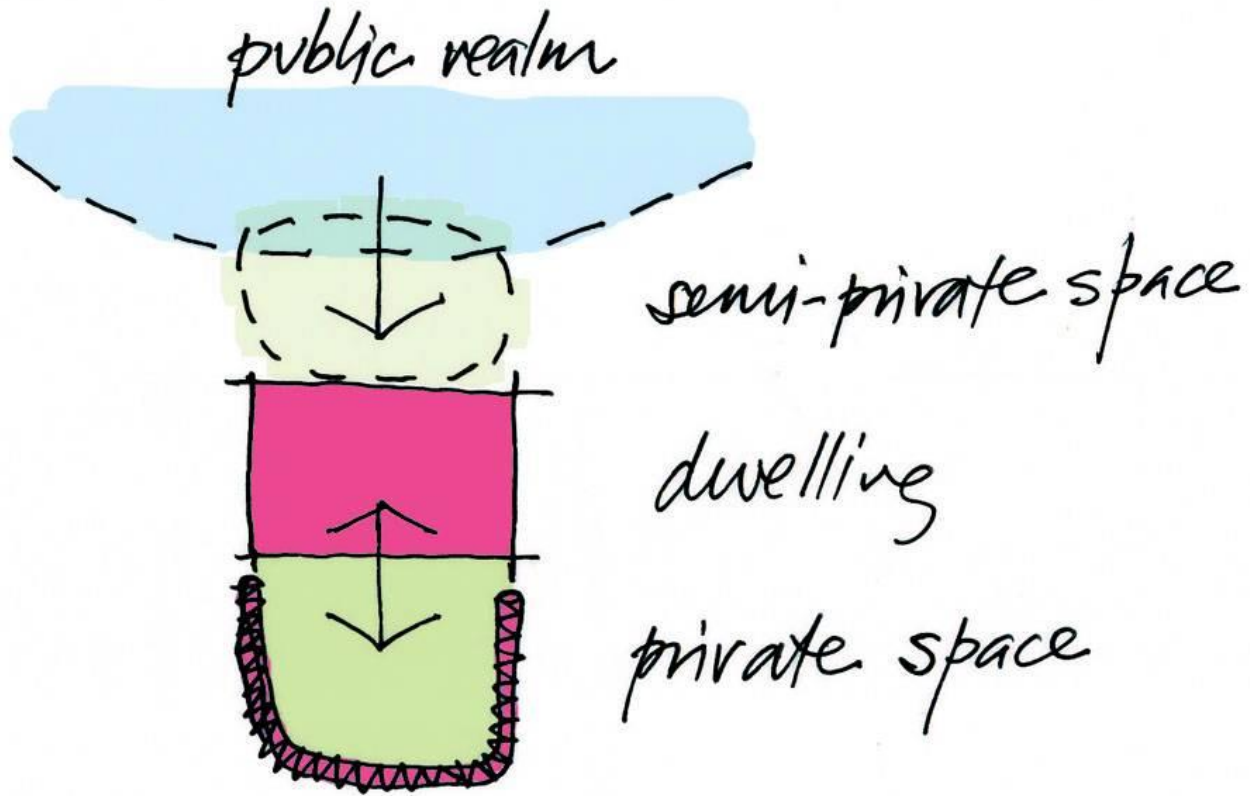






Red Hill, Brisbane









The new Queensland Guidelines consider  
CPTED principles and guiding ideas  
in terms of:

surveillance

legibility

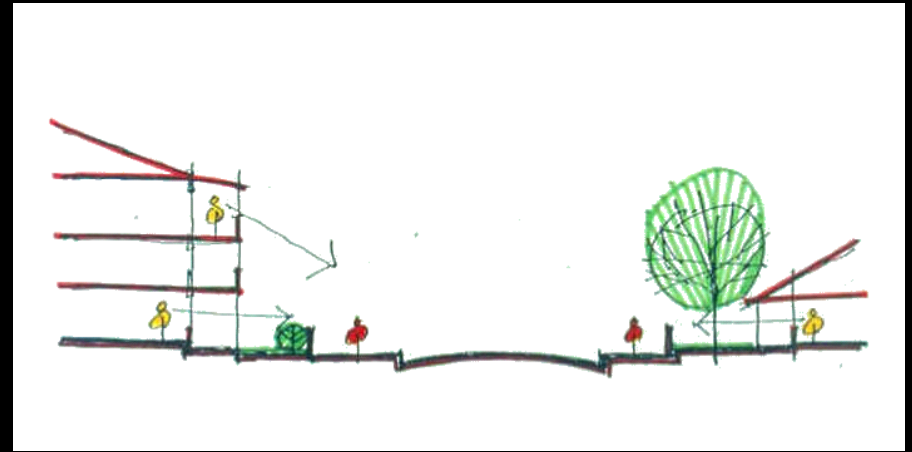
territoriality

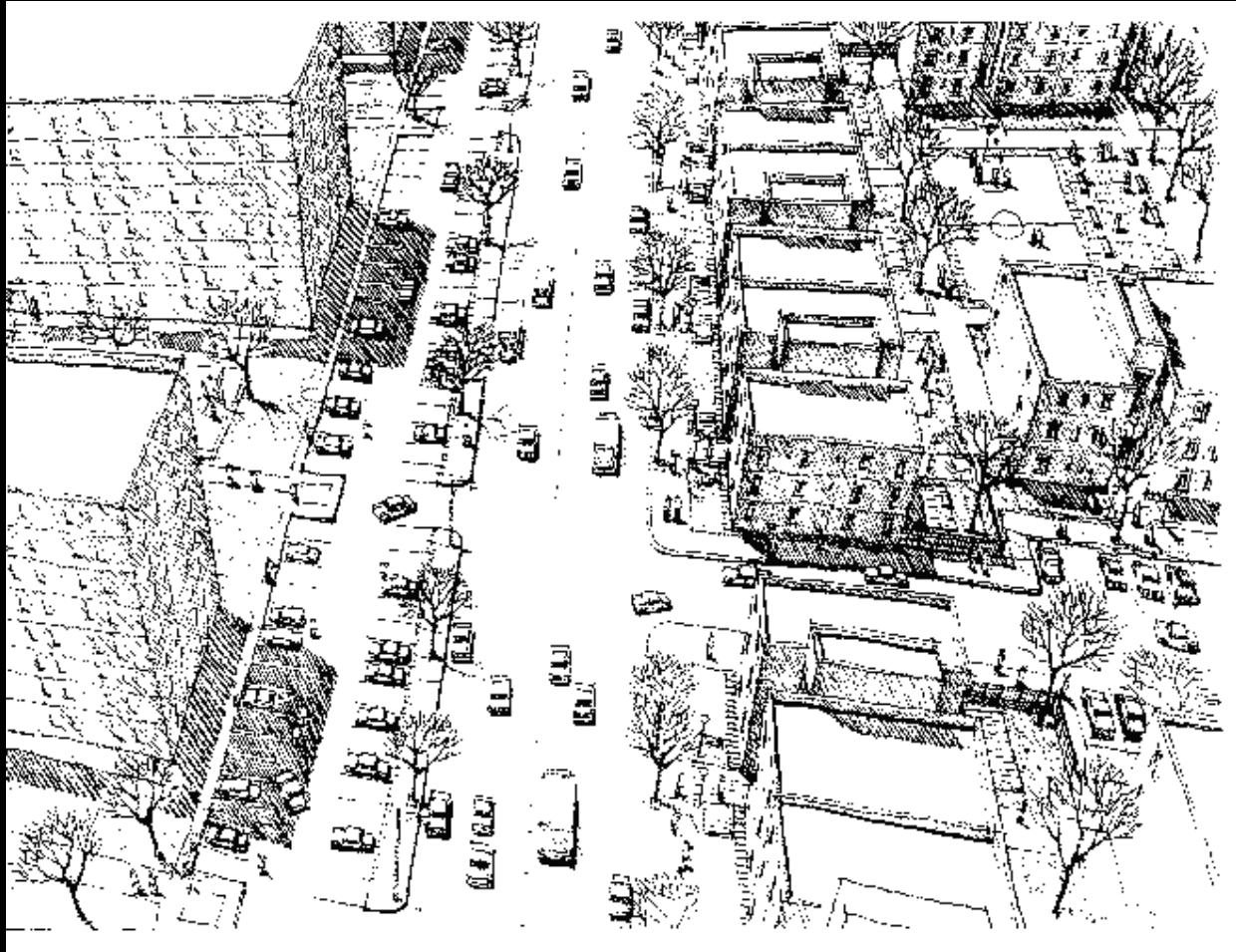
ownership of the outcomes

management

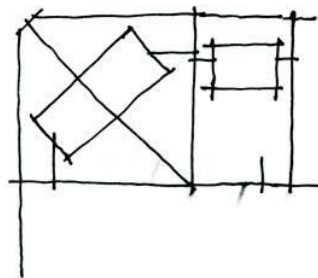
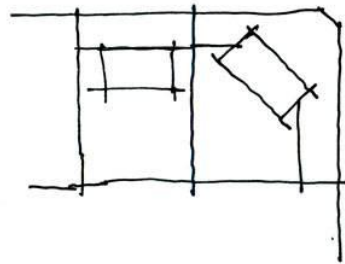
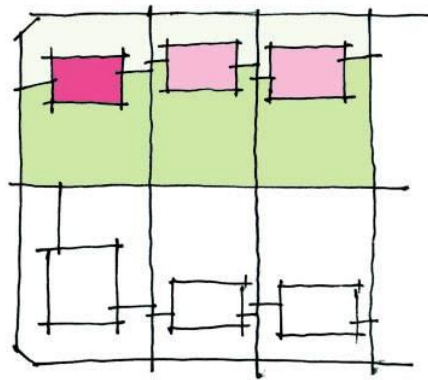
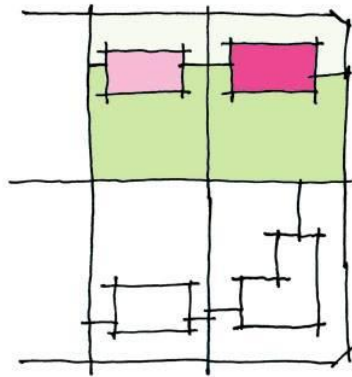
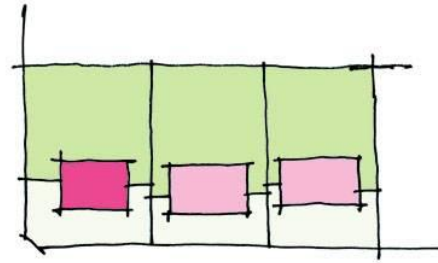
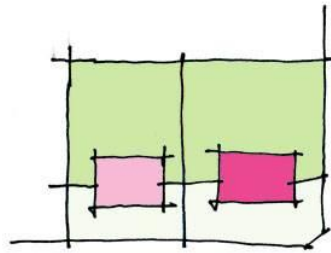
vulnerability

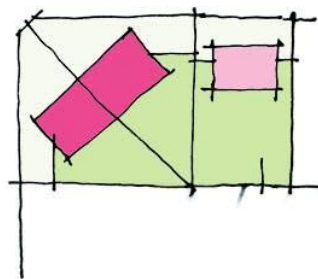
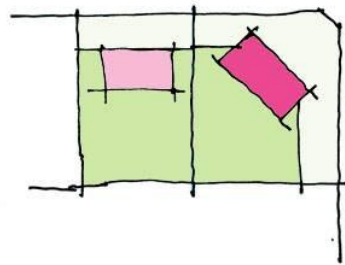
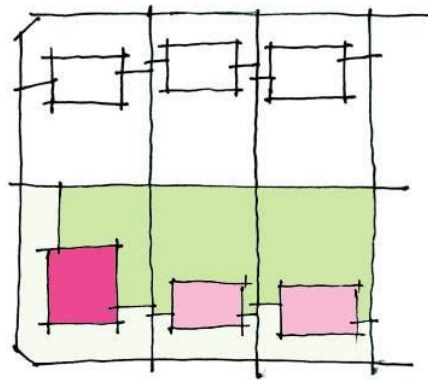
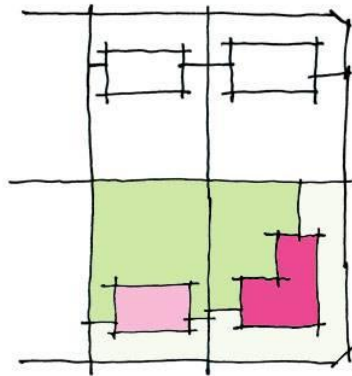
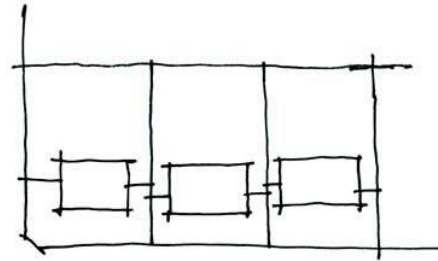
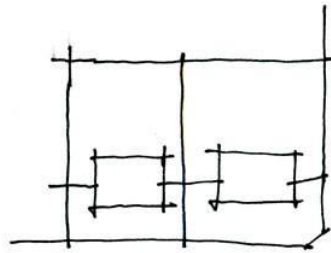
# Crime Prevention Through Environmental Design

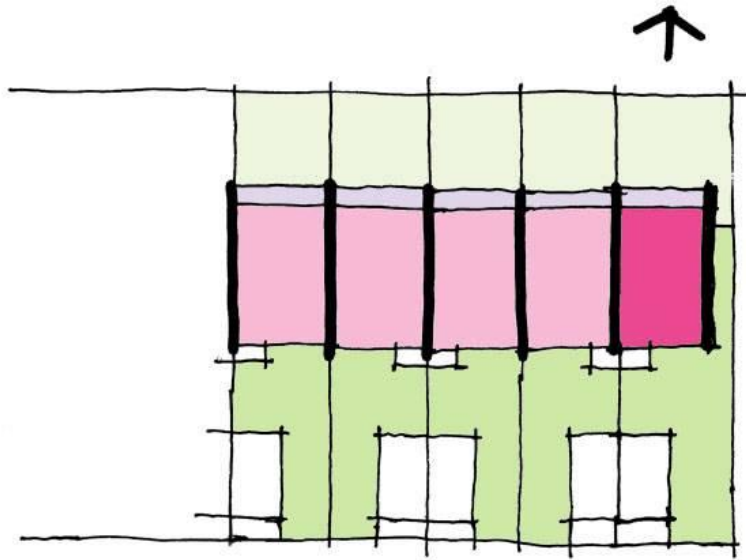


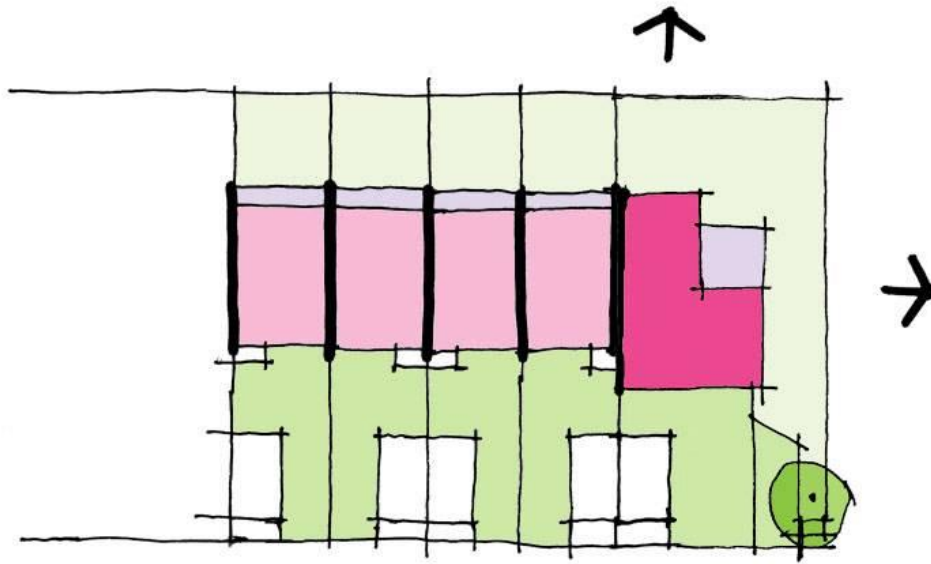


*Newman, 1975*

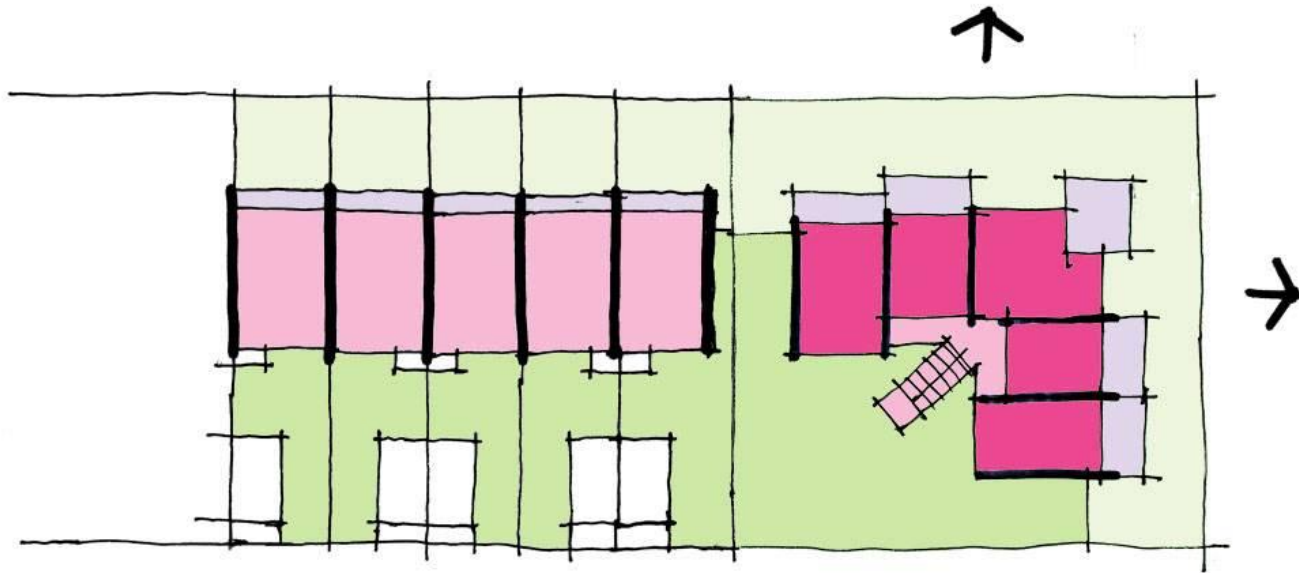














Queensland Social Housing



Sunshading to reduce heat and direct sunlight.

Vegetation to the podium levels to break up the built form and provide some shade to outdoor areas and create attractive and usable balcony spaces

Shading to outdoor areas to increase comfort and use

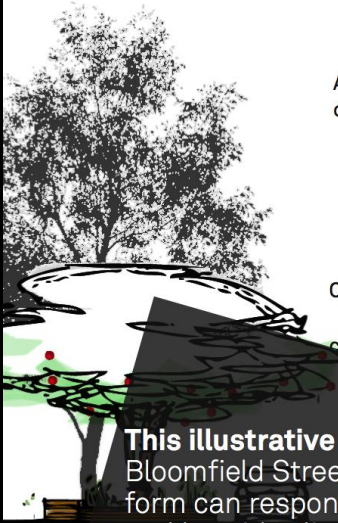
Adjustable louvres create privacy and control sunlight while reducing noise from the street

Continuous shade awning creating all weather protection and a consistent language to the street

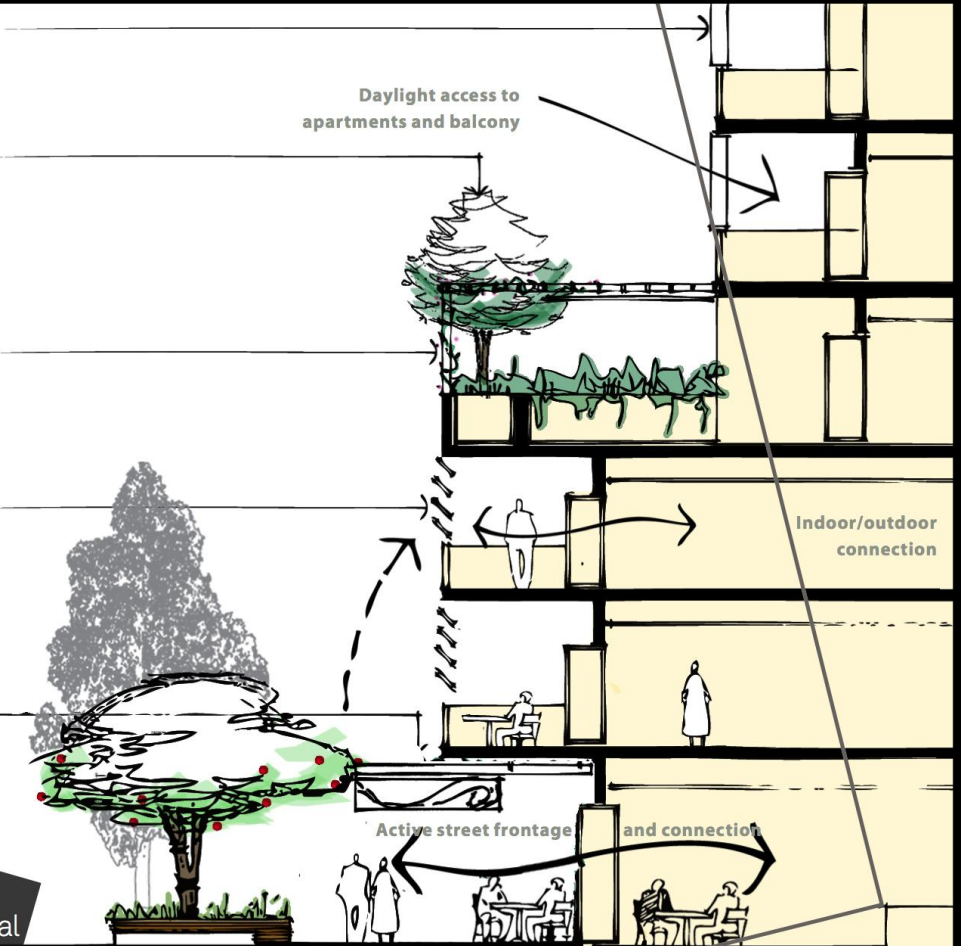
Daylight access to apartments and balcony

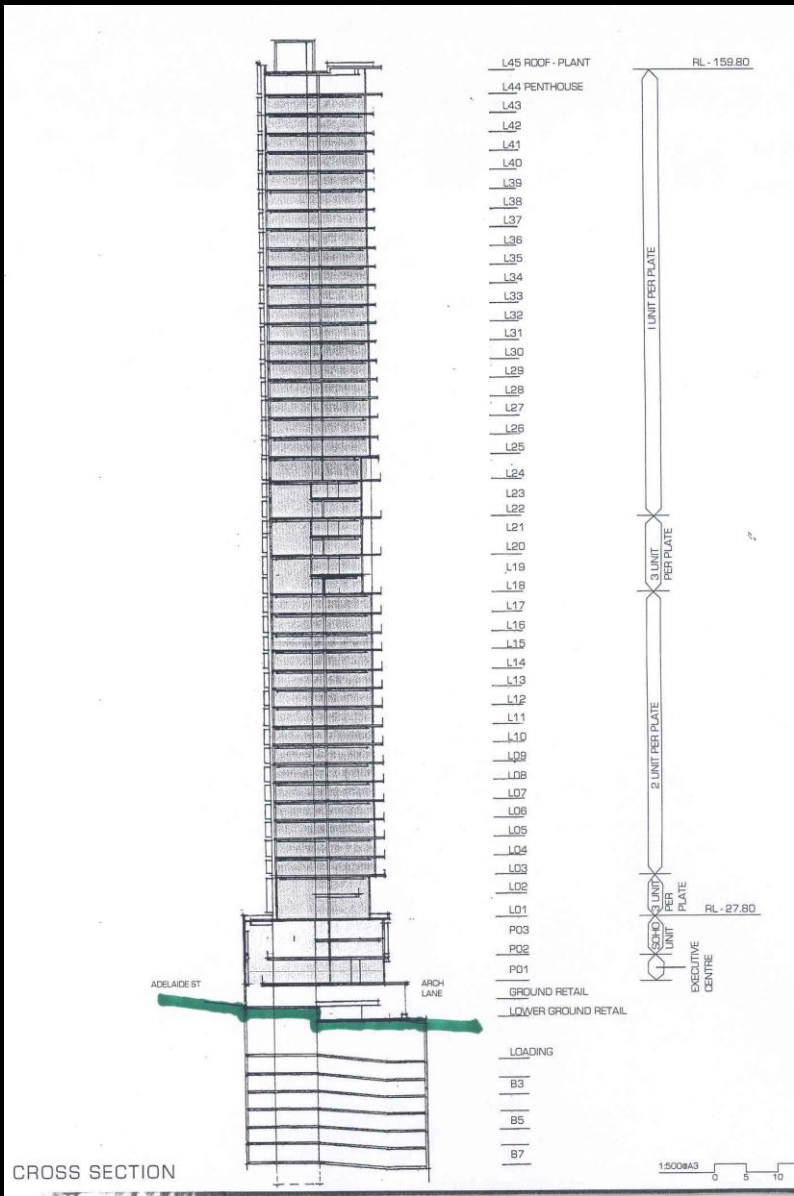
Indoor/outdoor connection

Active street frontage and connection



**This illustrative section across Bloomfield Street demonstrates how built form can respond to Cleveland's sub-tropical and bayside climate conditions as well as create vibrant and human scaled streets**





CROSS SECTION







car parking: above ground or below ground?











# What about Neighbourhood Design?

How well does the layout of the neighbourhood  
encourage  
active use of the public realm ?  
a mix of households ?  
local facilities ?  
access to public transport?

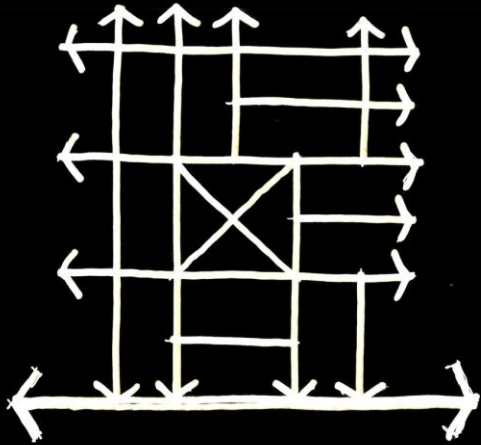
For example:  
**how well** does the neighbourhood design

promote **legibility**?

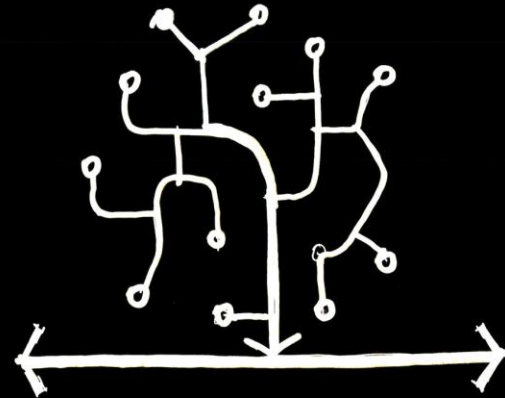
deliver pedestrian/cyclist **amenity** and interest?

accommodate a **variety of households** to ensure  
residents are around at all times?

sensitively accommodate supportive  
**neighbourhood facilities**?



grid



tree





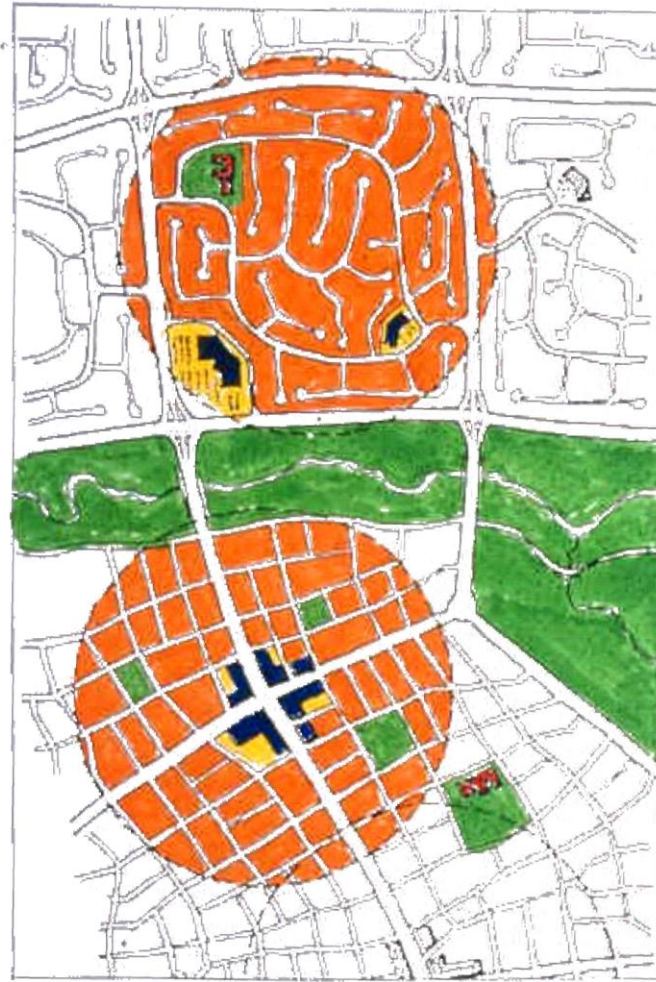


Figure 1: Comparison between conventional and Community Code approach to neighbourhood design.

*W.A Community Code Draft 9/27*



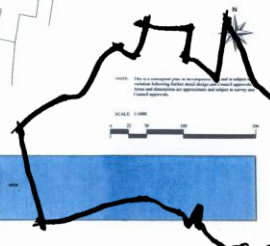
Perth





Cannon Hill Developments Pty. Ltd.

URBAN DESIGN CONCEPT  
GEOFFREY WALKER  
URBAN DESIGN+PLANNING



# - MASTERPLAN -

MAY 2000

Gold Coast

# RADBURN GARDEN HOMES



The Queensland Guidelines not only discuss

trees and grids

but also other neighbourhood design approaches  
such as

radburn systems

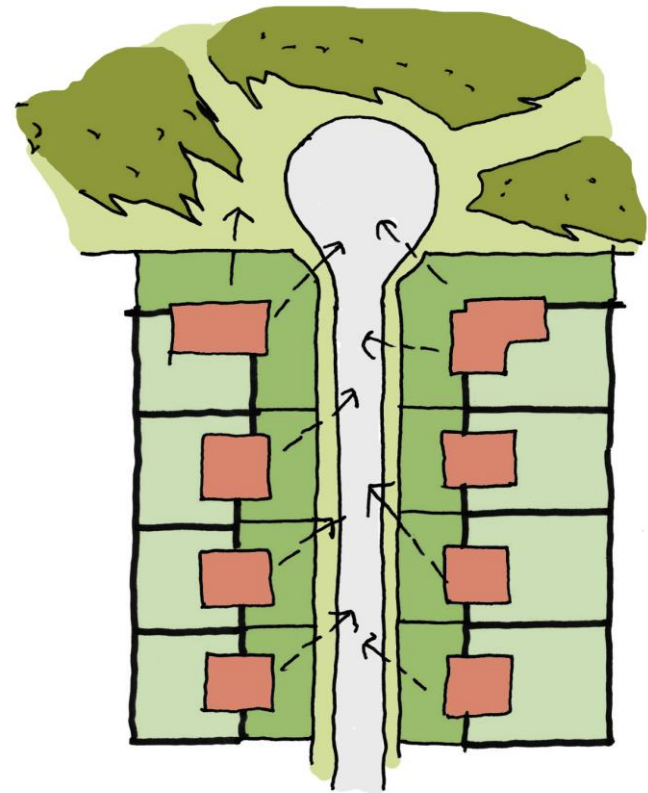
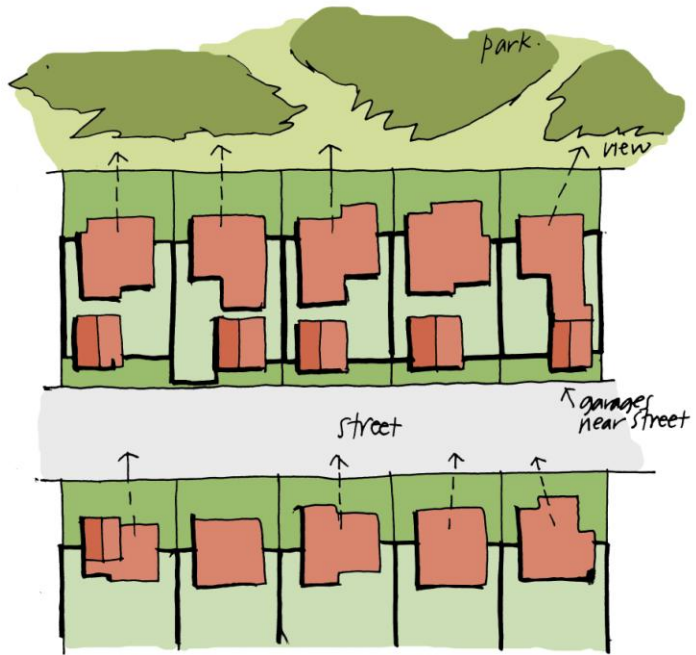
culs-de-sac and paths

battleaxe lots

rear lanes

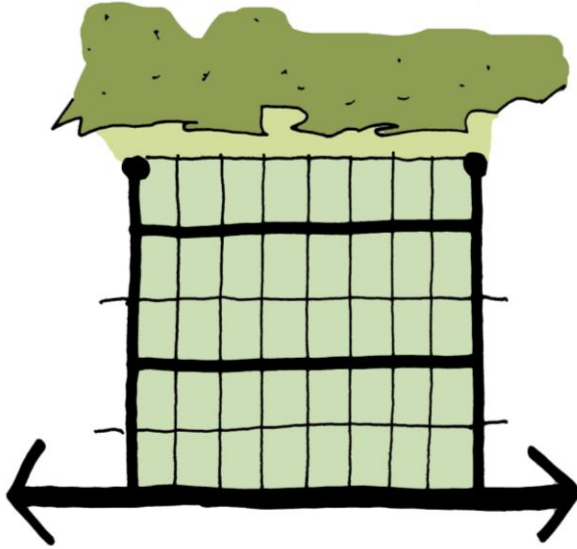
golfcourse or marina estates

esplanades

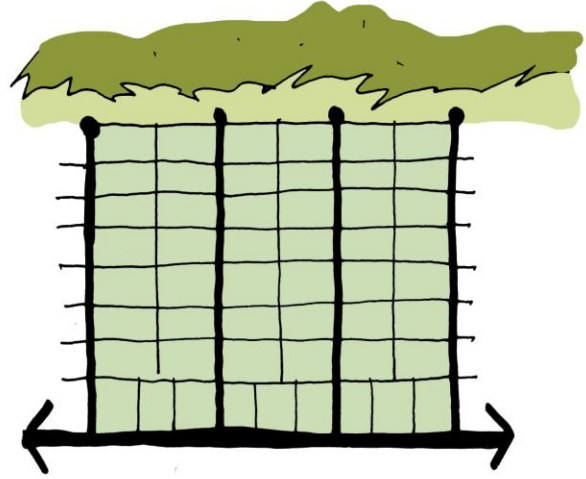




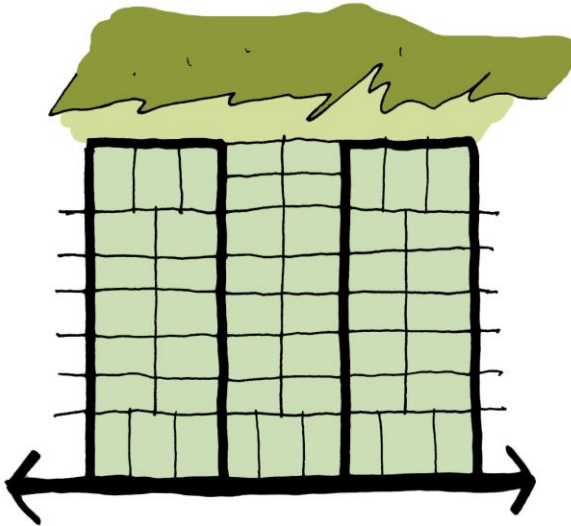
1



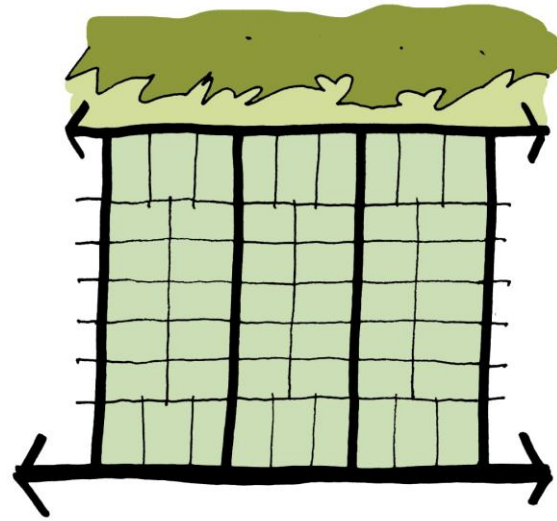
2

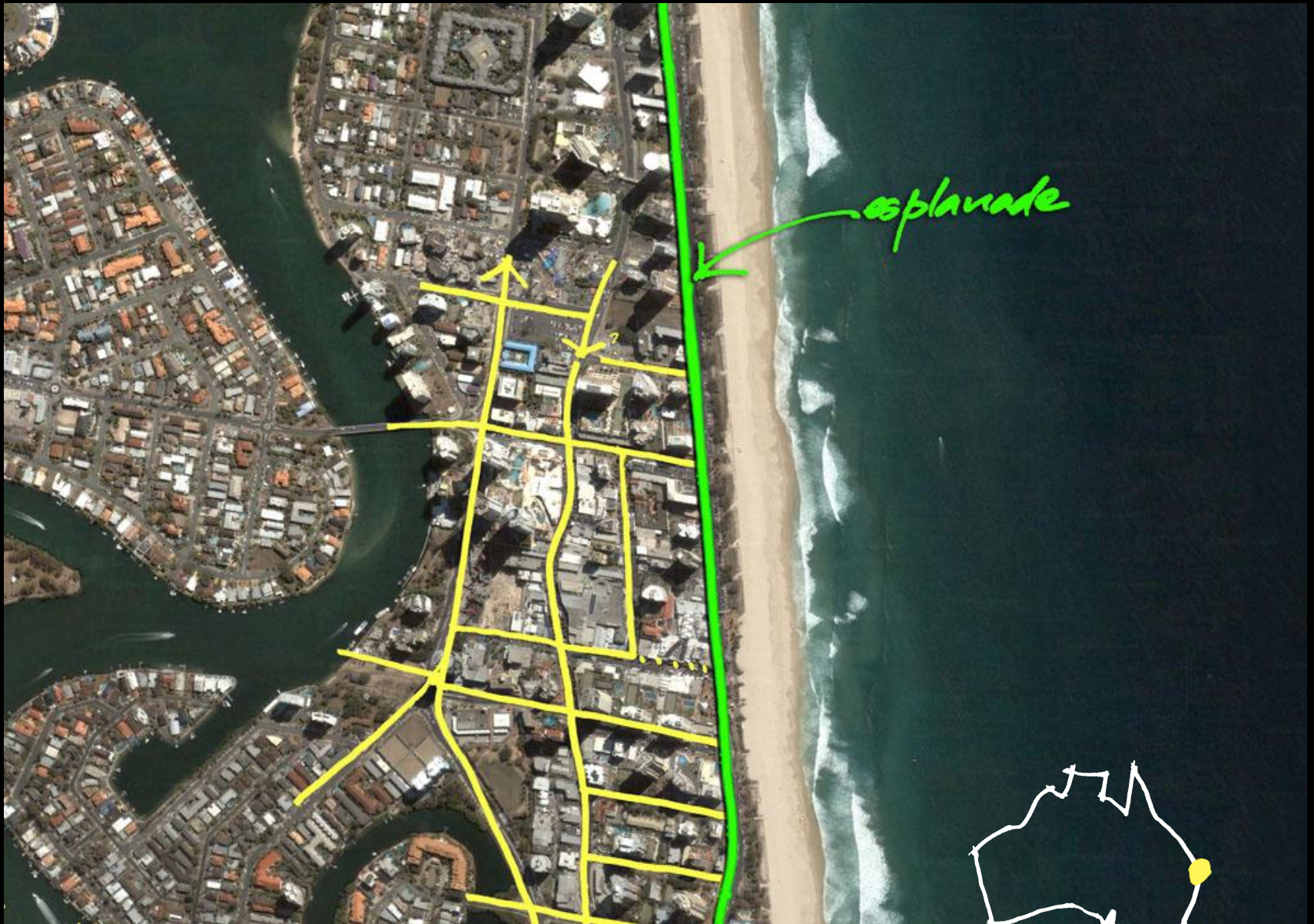


3



4





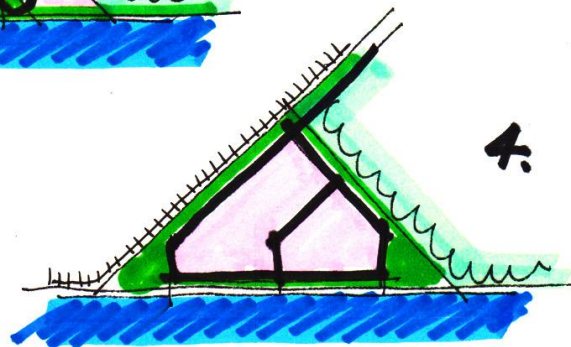
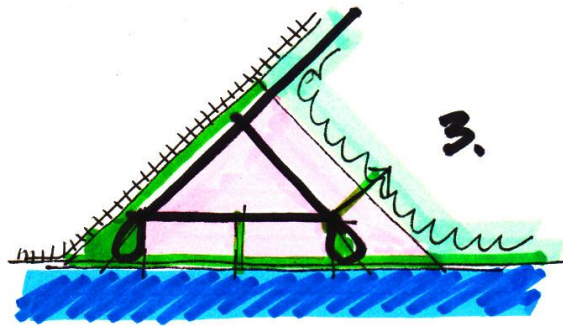
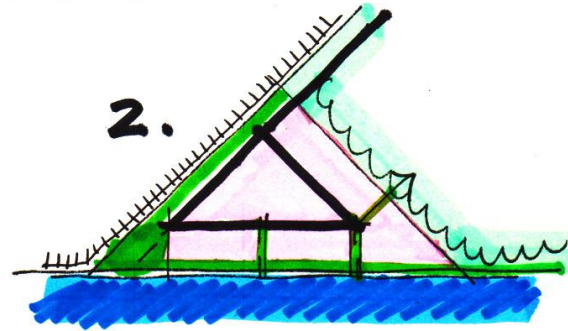
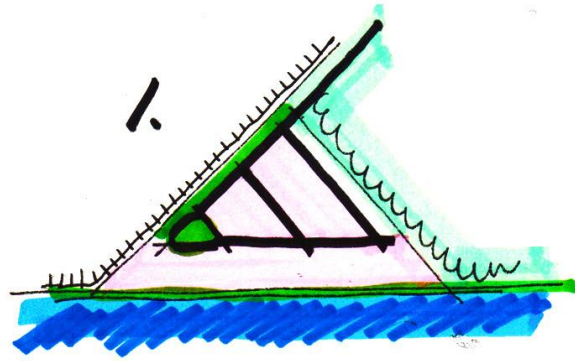
esplanade



Gold Coast









## Street-by-Street: The Waterfront



Maritime Museum sign

**E**XCELLENT SHOPS, HISTORIC buildings, top restaurants and bars, a superb view – Auckland’s waterfront has something for everyone. Yet only a few years ago, this area was of little interest to residents and visitors, and the inner city, traditionally reserved for offices, was almost deserted after dark. That trend has been reversed and downtown Auckland is now a hive of activity. New and planned apartments, some on the water’s edge and others in garden environments, along with numerous trendy bars and restaurants, have made the waterfront a prime living and entertainment area.



### Queen Elizabeth II Square

The international food stalls lining the square make it a popular eating and meeting place (see p71). Another food court is at the nearby Downtown Shopping Centre.



### ★ Ferry Building

At the Ferry Building, visitors can buy tickets for ferries and harbour cruises or dine at its popular ground-floor restaurant (see p71).

#### KEY

— Suggested route

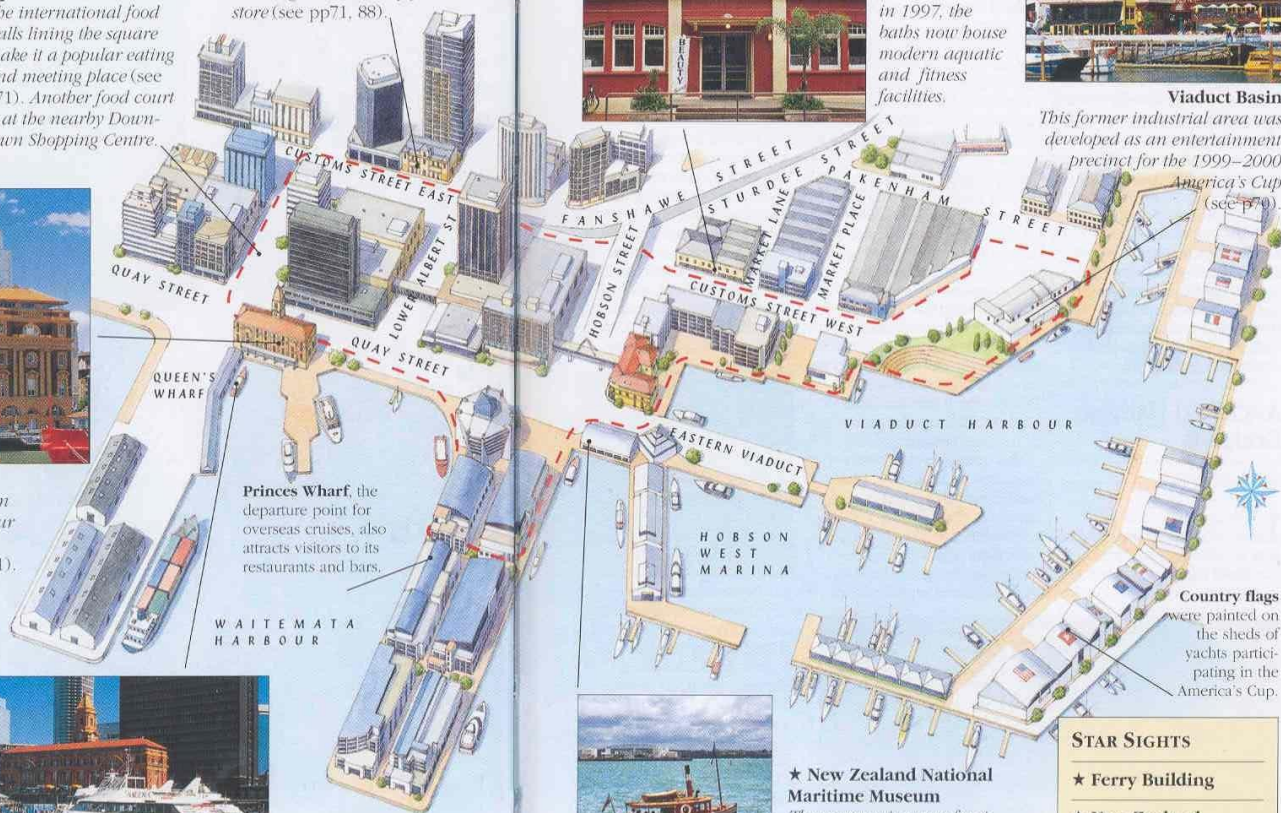
### Boat Services

A variety of harbour cruises and ferry services to Devonport and the Hauraki Gulf Islands operate from the back of the Ferry Building.



### Old Customhouse

Formerly part of the city’s financial district, this 1889 building houses a duty-free store (see pp71, 88).



Princes Wharf, the departure point for overseas cruises, also attracts visitors to its restaurants and bars.

WAITEMATA HARBOUR

0 kilometres 100  
0 miles 100

### AMERICA'S CUP

Viaduct Basin was the home base for the yachts that participated in the 1999–2000 and 2002–2003 America’s Cup. New Zealand successfully defended the cup it took off the Young America (USA) team led by Dennis Connor in 1995. In the 2002–2003 event nine challengers took on Team New Zealand and these syndicates came from all over the world, including France, Italy, Sweden, Switzerland, England and the United States. The history of the cup goes back to the 1870s, but the intense emotion surrounding the challenge still remains.



New Zealand’s *Black Magic* defeating its Italian challenger in the America’s Cup 2000 final



### Tepid Baths

Built in 1914 and refurbished in 1997, the baths now house modern aquatic and fitness facilities.



### Viaduct Basin

This former industrial area was developed as an entertainment precinct for the 1999–2000 America’s Cup (see p70).

Country flags were painted on the sheds of yachts participating in the America’s Cup.



### ★ New Zealand National Maritime Museum

The museum’s many fascinating exhibits include historic vessels that take visitors out onto the harbour (see p71).

### STAR SIGHTS

- ★ Ferry Building
- ★ New Zealand National Maritime Museum

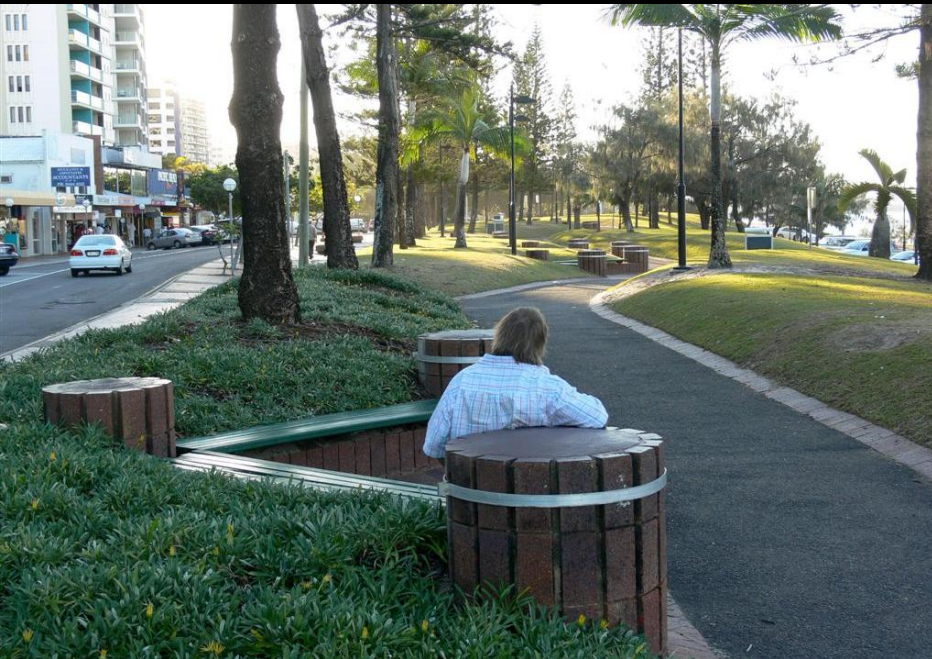




South Bank



Teneriffe

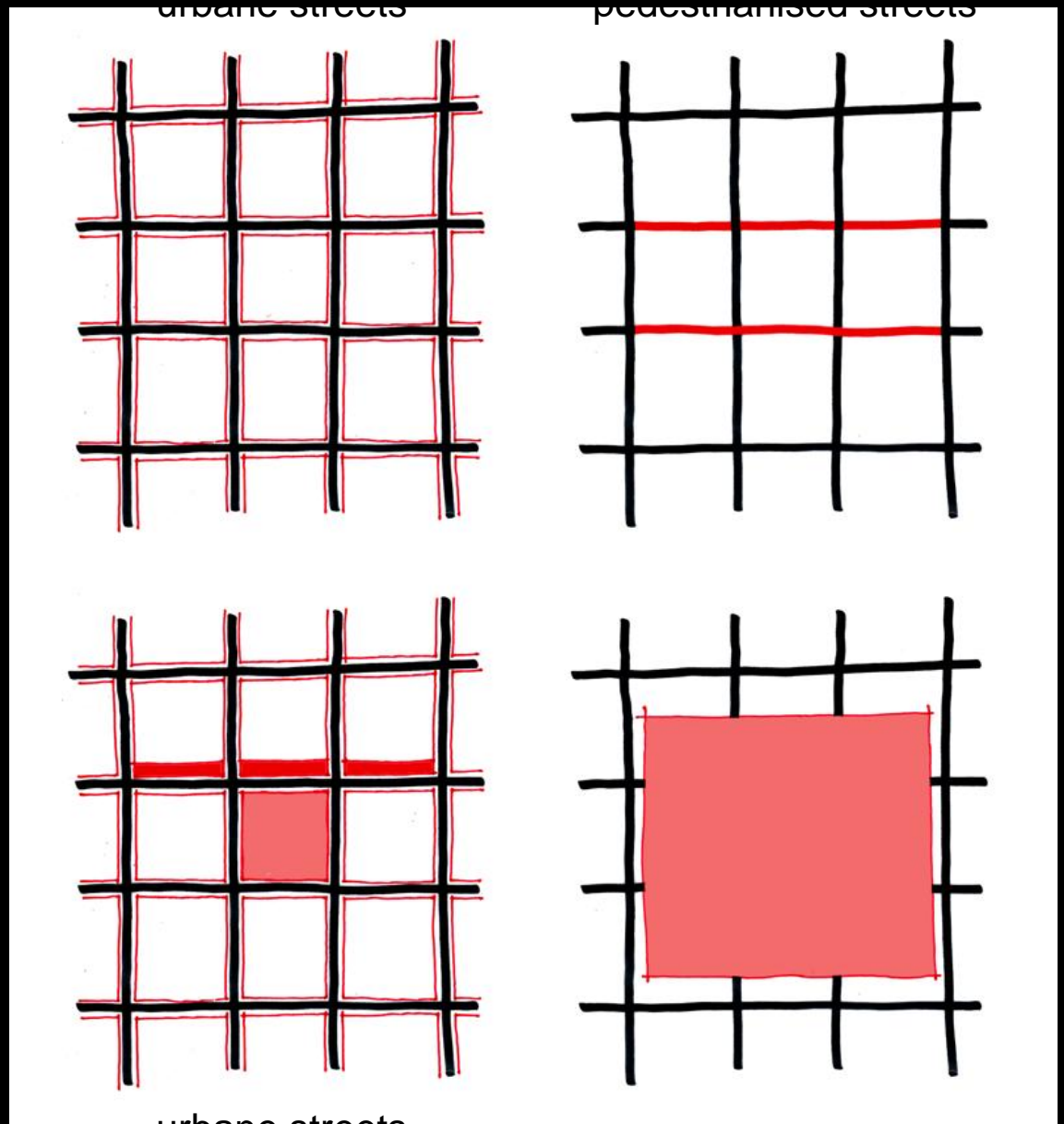


Mooloolaba  
urbyrne.design



Roma Street Parklands

# CPTED and Urbanism

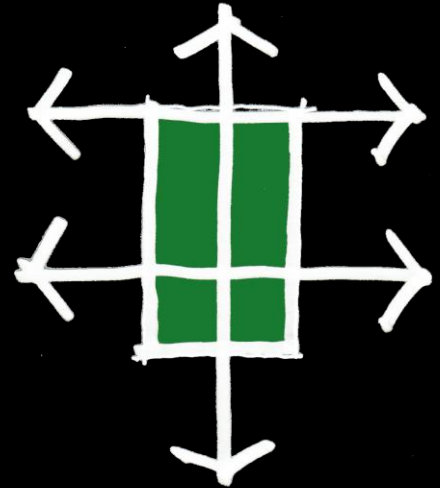
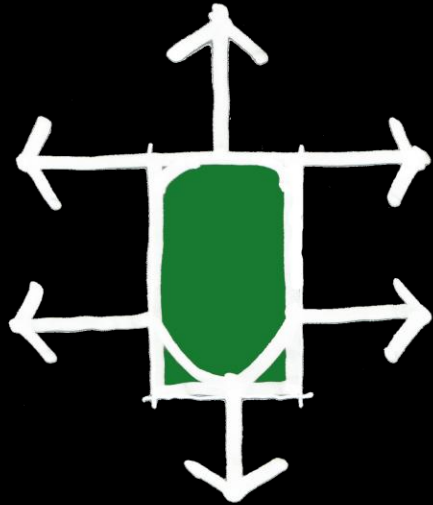
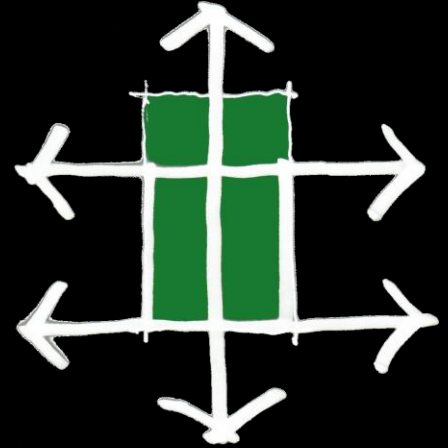
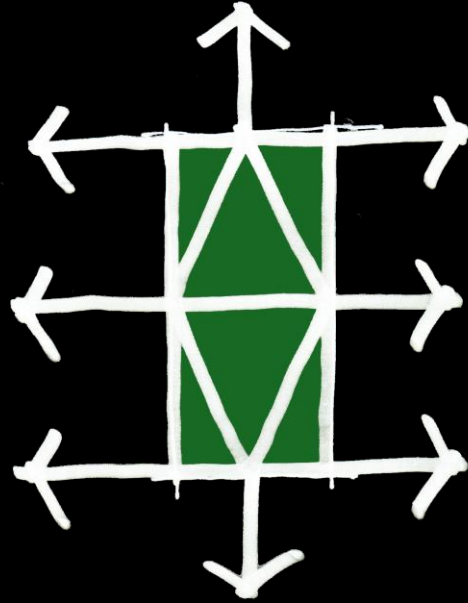
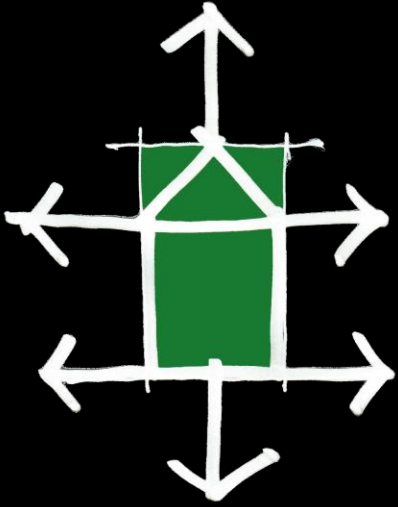






City of Adelaide







Pointer 34°55'11.80" S 138°36'05.96" E

Streaming | | | | | | | | | | 100%

© 2007 Google™

Eye alt 1.48 km

In neighbourhood design and city centre design

# LEGIBILITY

(and the potential for community ownership  
that it can assist)

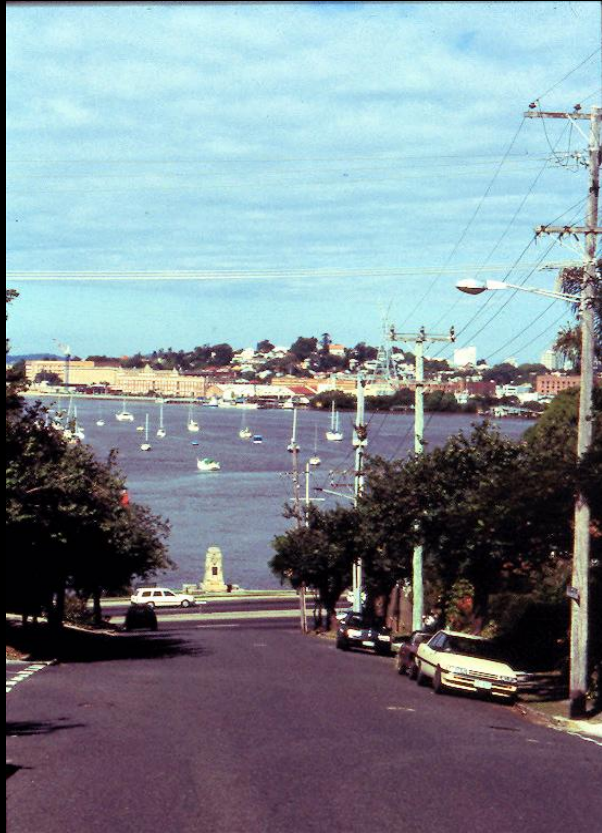
are important qualities

and

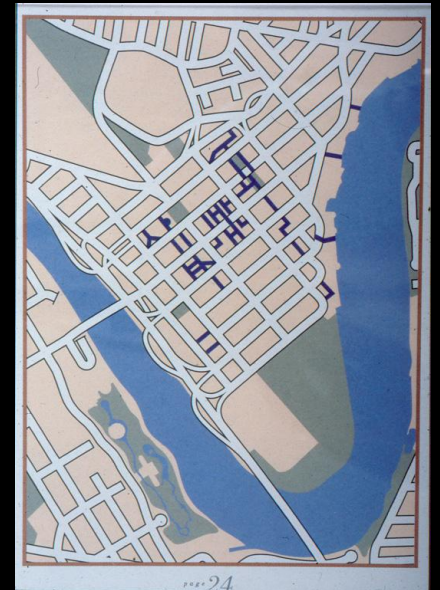
# VISUAL CONNECTIVITY

is often an important part of that





Brisbane







Elizabeth Street



Charlotte Street

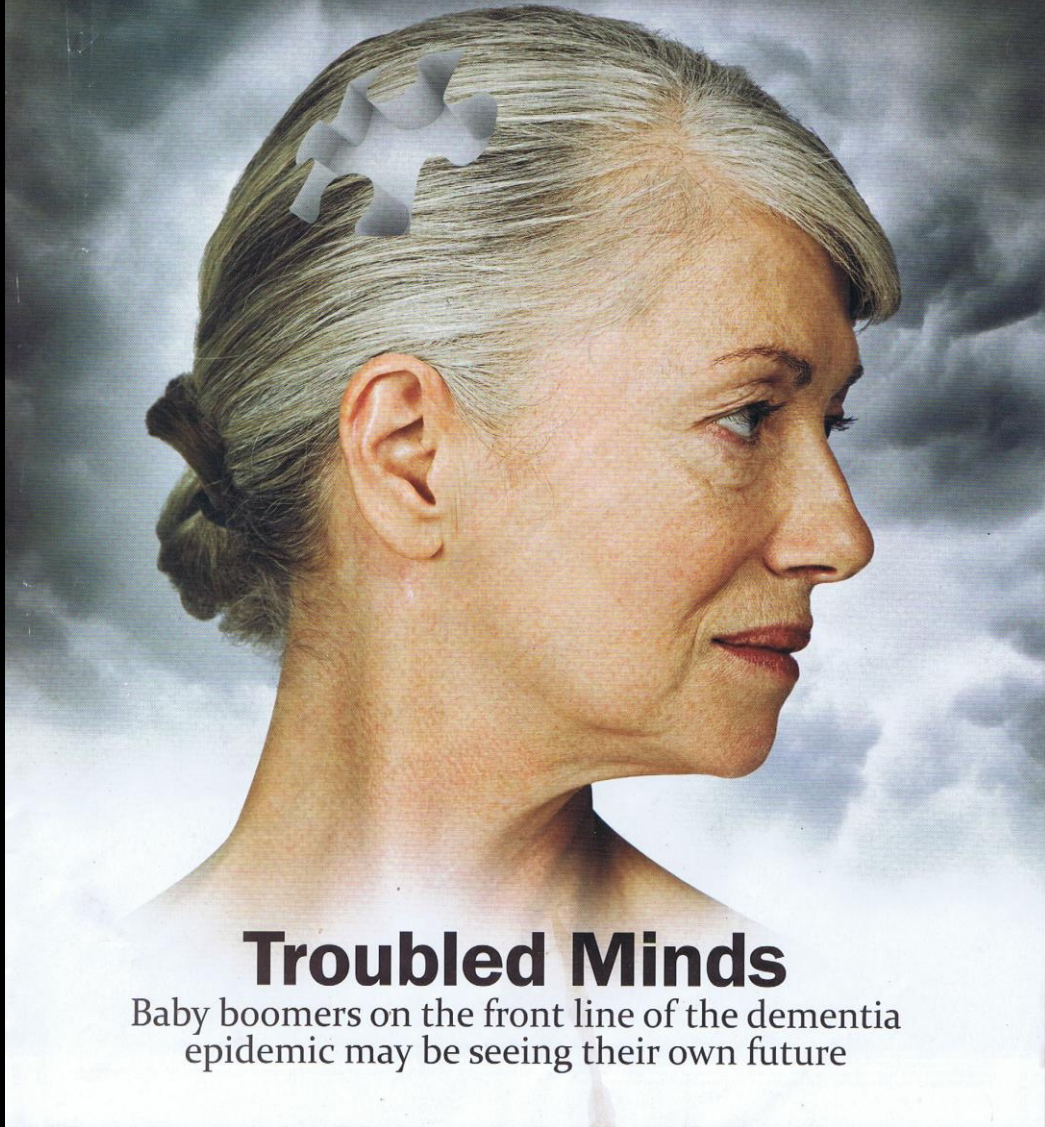






# The Weekend Australian Magazine

JULY 3-4, 2010



## **Troubled Minds**

Baby boomers on the front line of the dementia epidemic may be seeing their own future



So .....

Current Australian thinking about **PRECINCT DESIGN** ?

- high connectivity within the precinct / neighbourhood
- high connectivity between precincts / neighbourhoods
- high connectivity to encourage walking / cycling
- high connectivity to facilitate public transport
- mix of housing types and households
- higher average residential densities
- potential mix of uses
- quality public realm
- design for urban building / street relationships
- design for legibility and sense of place
- capacity for change

.....and arguably CPTED principles are involved in all of these

“City and Town **Centres**  
are major battlegrounds  
for  
Urban Design and CPTED.”



*Jim Wark photo in Dolores Hayden, 'A field guide to sprawl', 2004*





Charters Towers



Childers

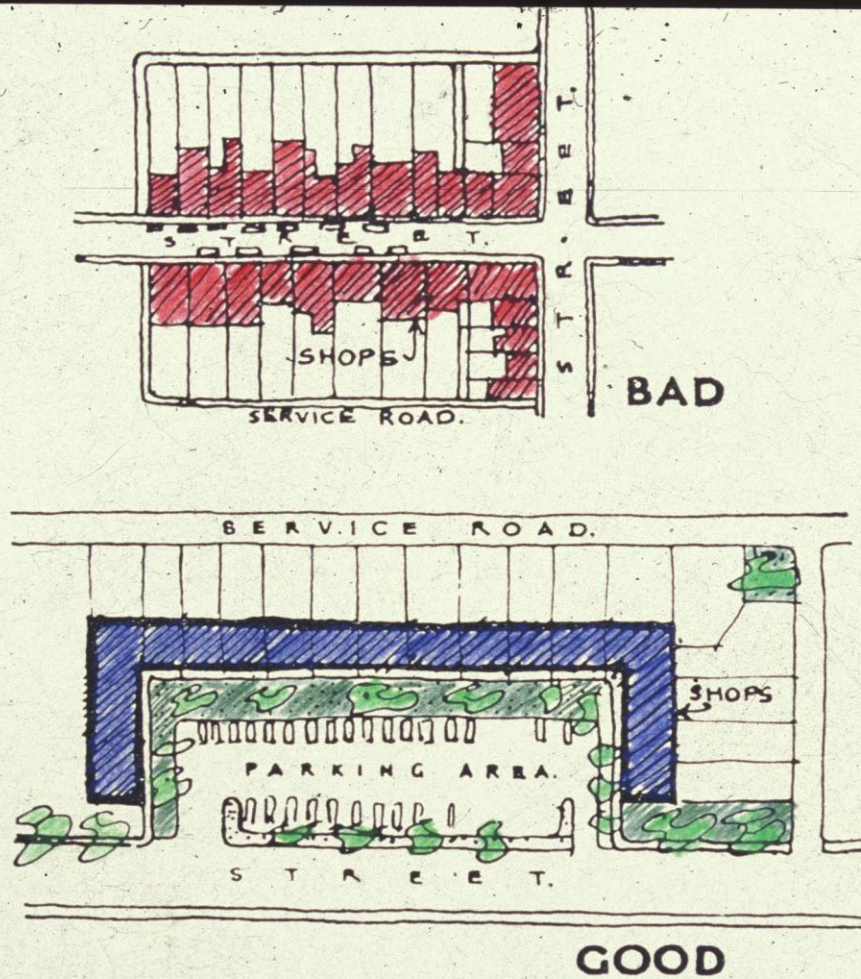
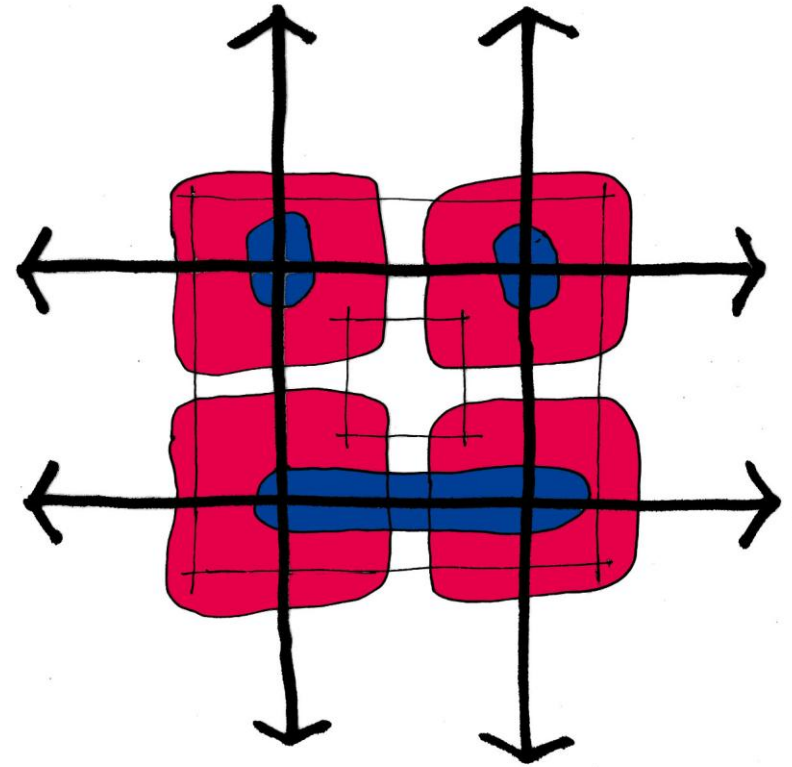
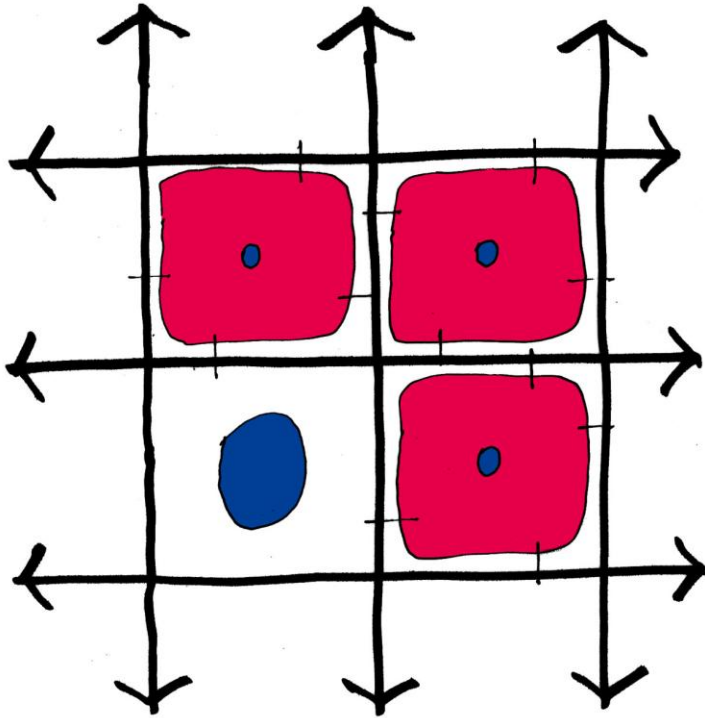


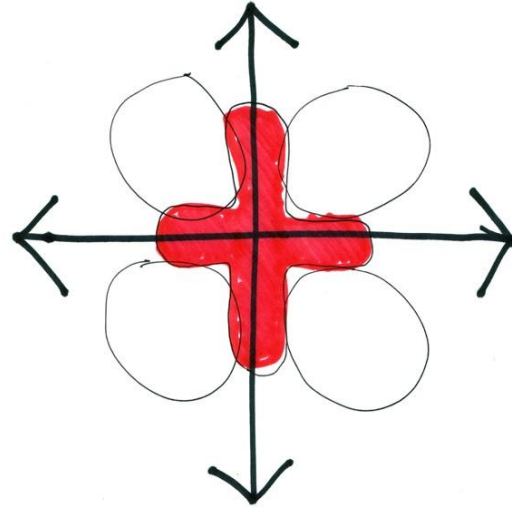
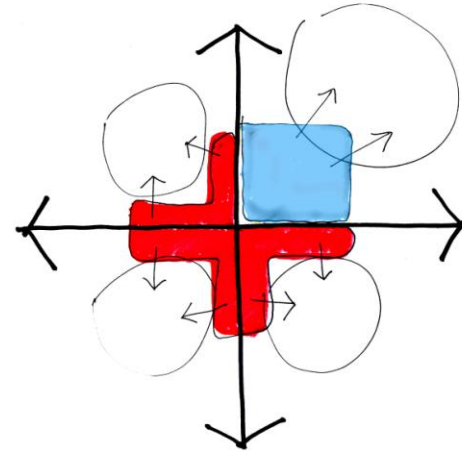
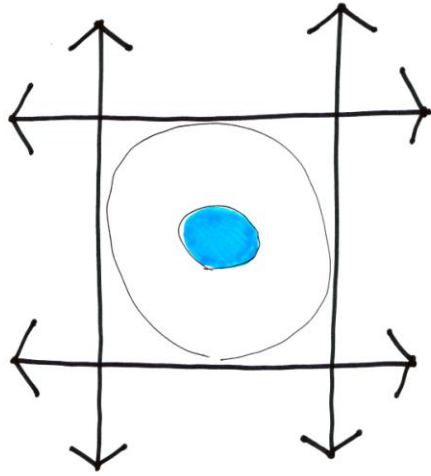
FIG. 82. Local shopping centres are best sited away from busy streets. Where these cannot be avoided, shops should be set back from street frontage. This reduces traffic dangers, provides parking space clear of the street, and gives good appearance.

*Brown + Shonaid (1951)*







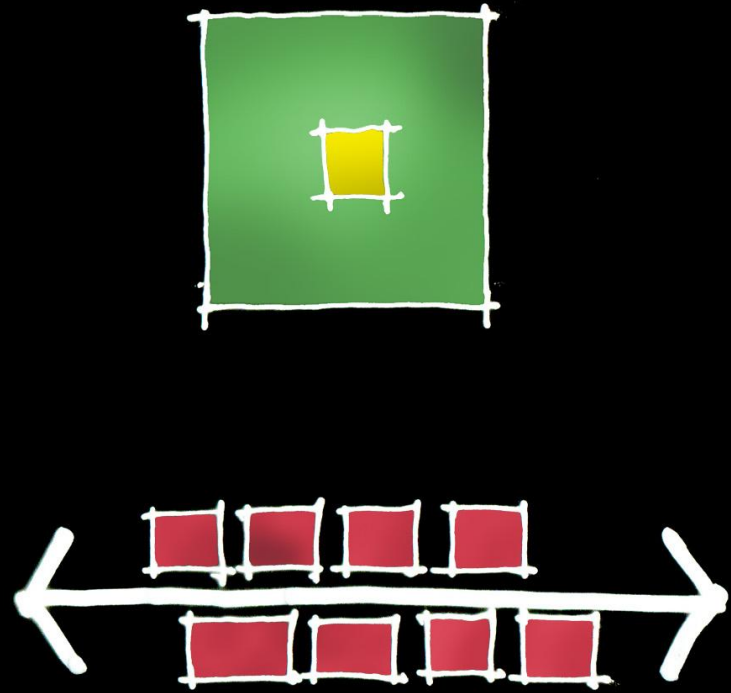
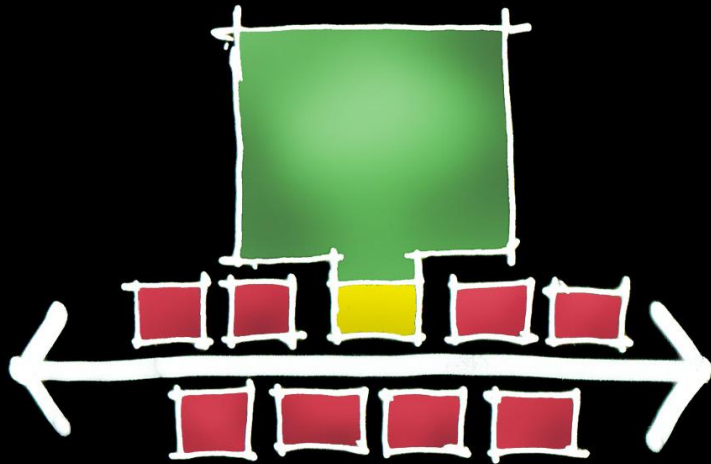














**Level Three**  
**M Street**



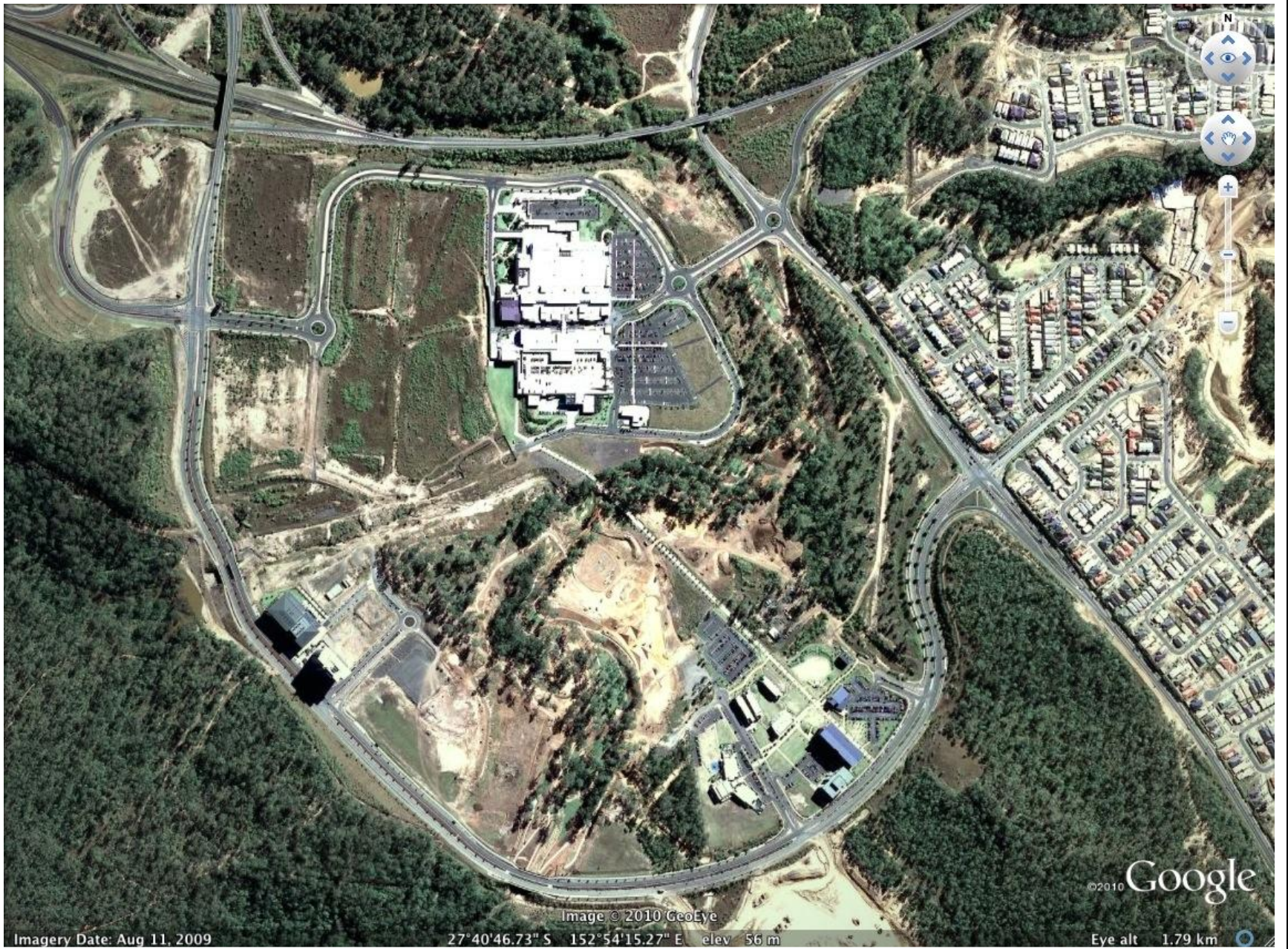
**Level Four**  
**Mezzanine**



-  Restrooms
-  Handicapped Facilities
-  Telephones
-  Old Trolley Trolley Booth

Georgetown, Washington DC





©2010 Google

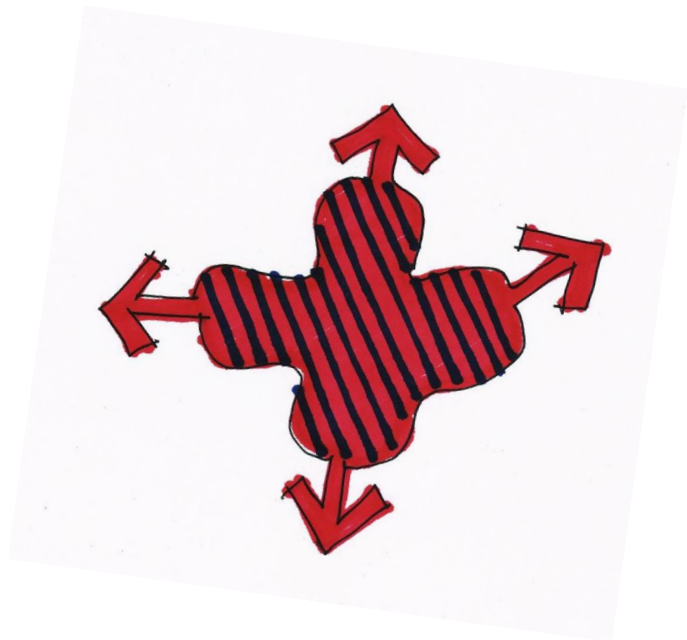
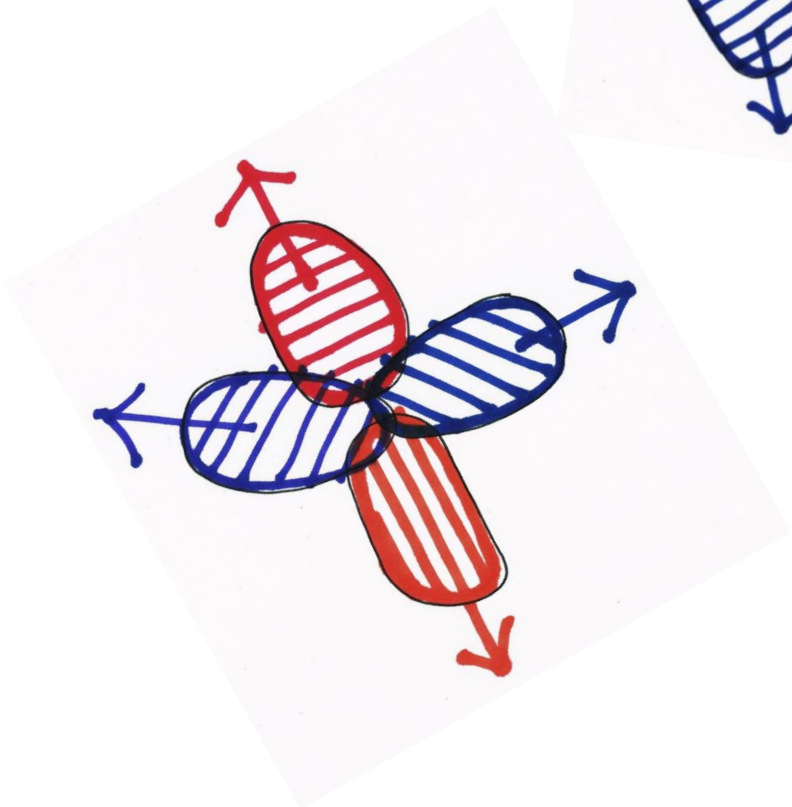
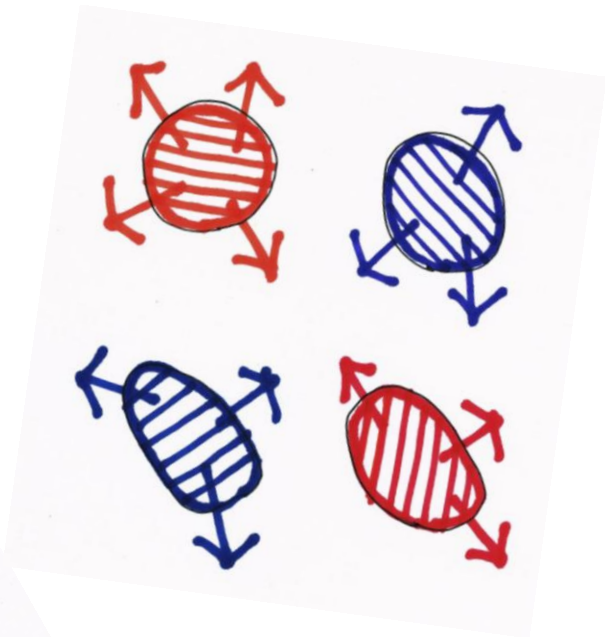
Image © 2010 GeoEye

Imagery Date: Aug 11, 2009

27°40'46.73" S 152°54'15.27" E elev 56 m

Eye alt 1.79 km

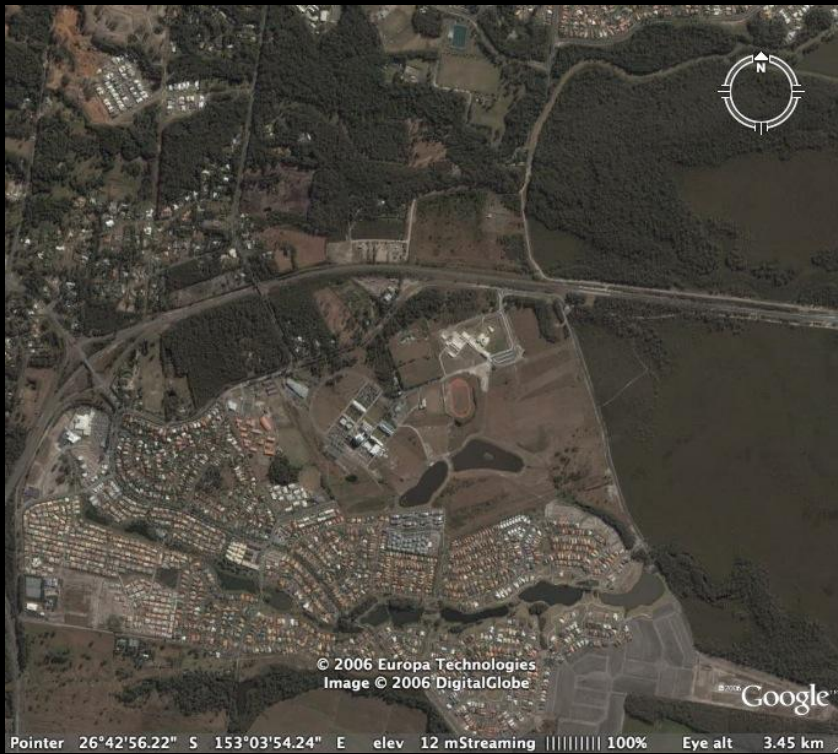




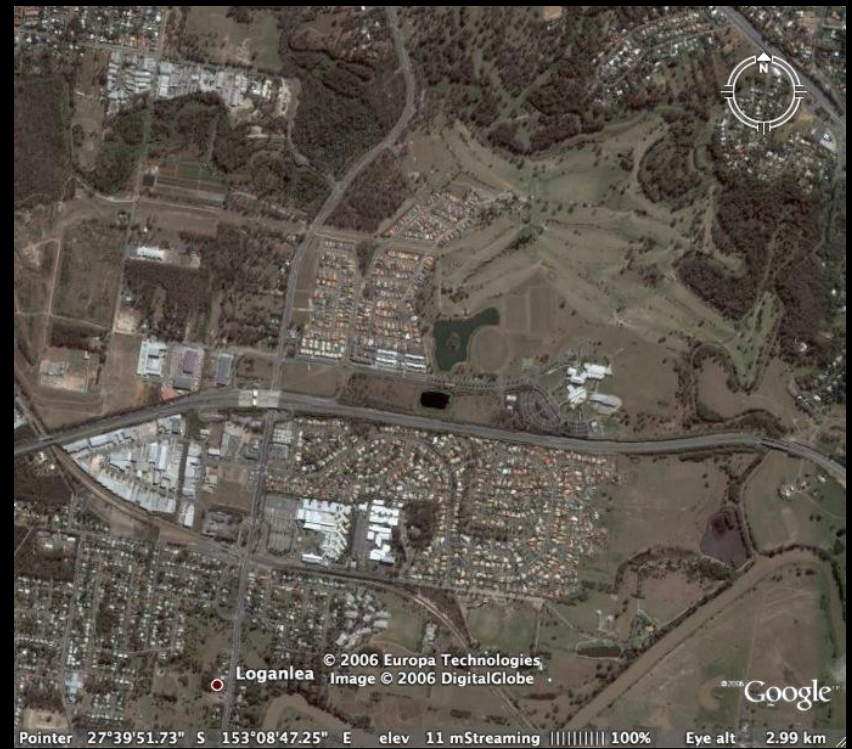








Sippy Downs



Meadowbank



“No single factor has more influence on the vitality of city centers than **the presence of universities and students in the area.**”

“All of the famous university cities and city districts in Europe.... are known for their vitality and interesting atmosphere.”

Jan Gehl and Lars GemzØe,  
*Public Spaces - Public Life*  
Copenhagen 1996







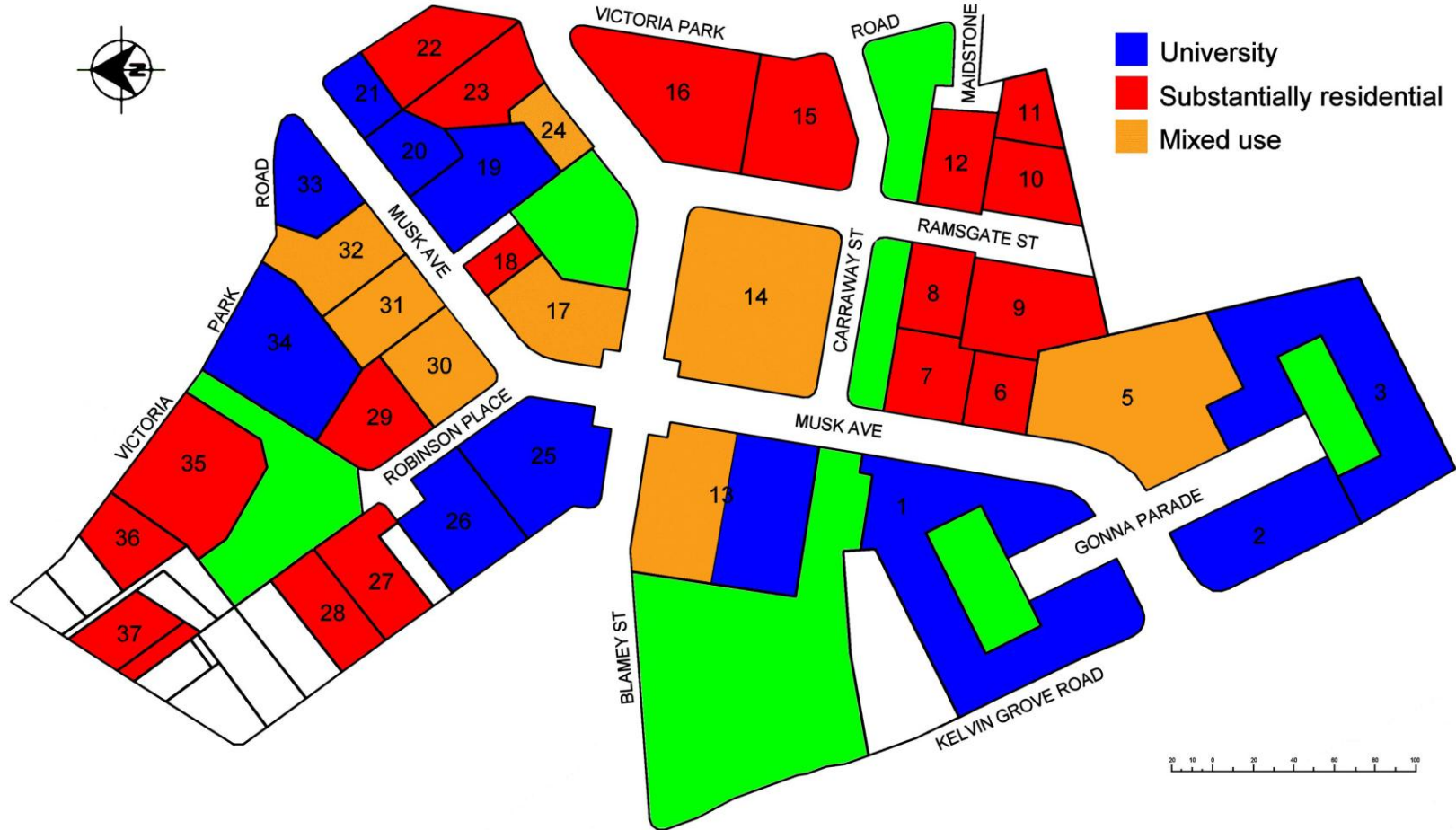




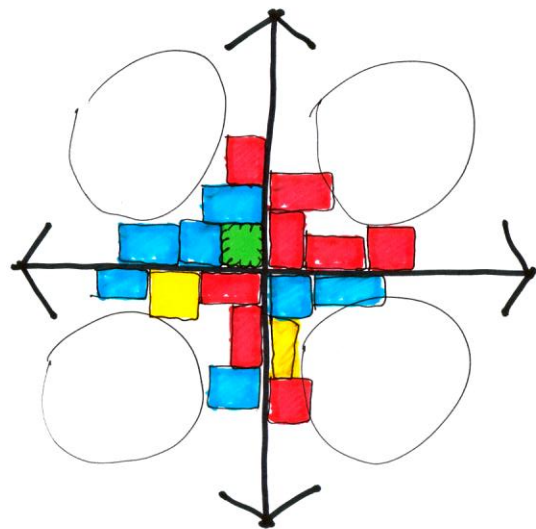
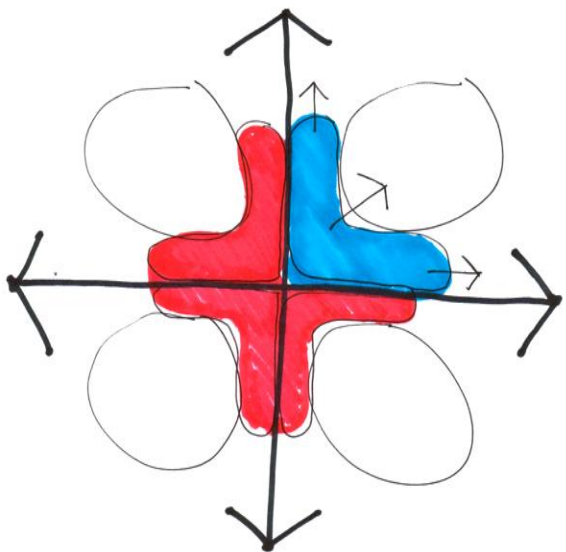
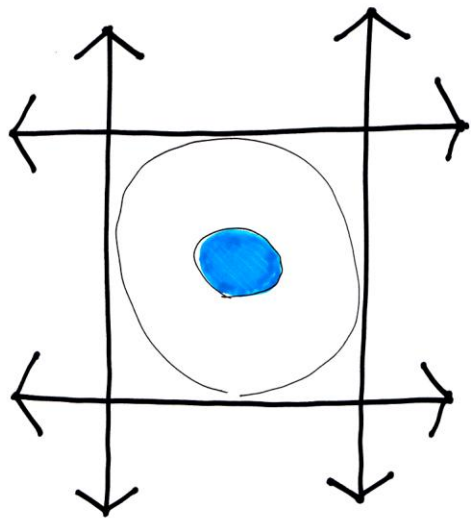


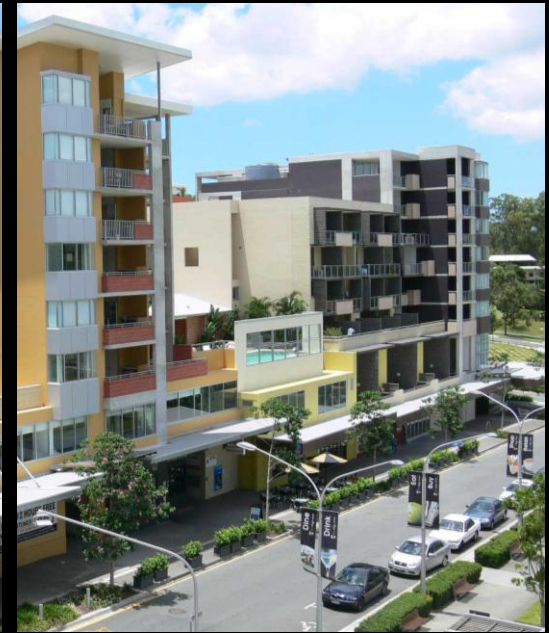
Image courtesy of Queensland Department of Housing











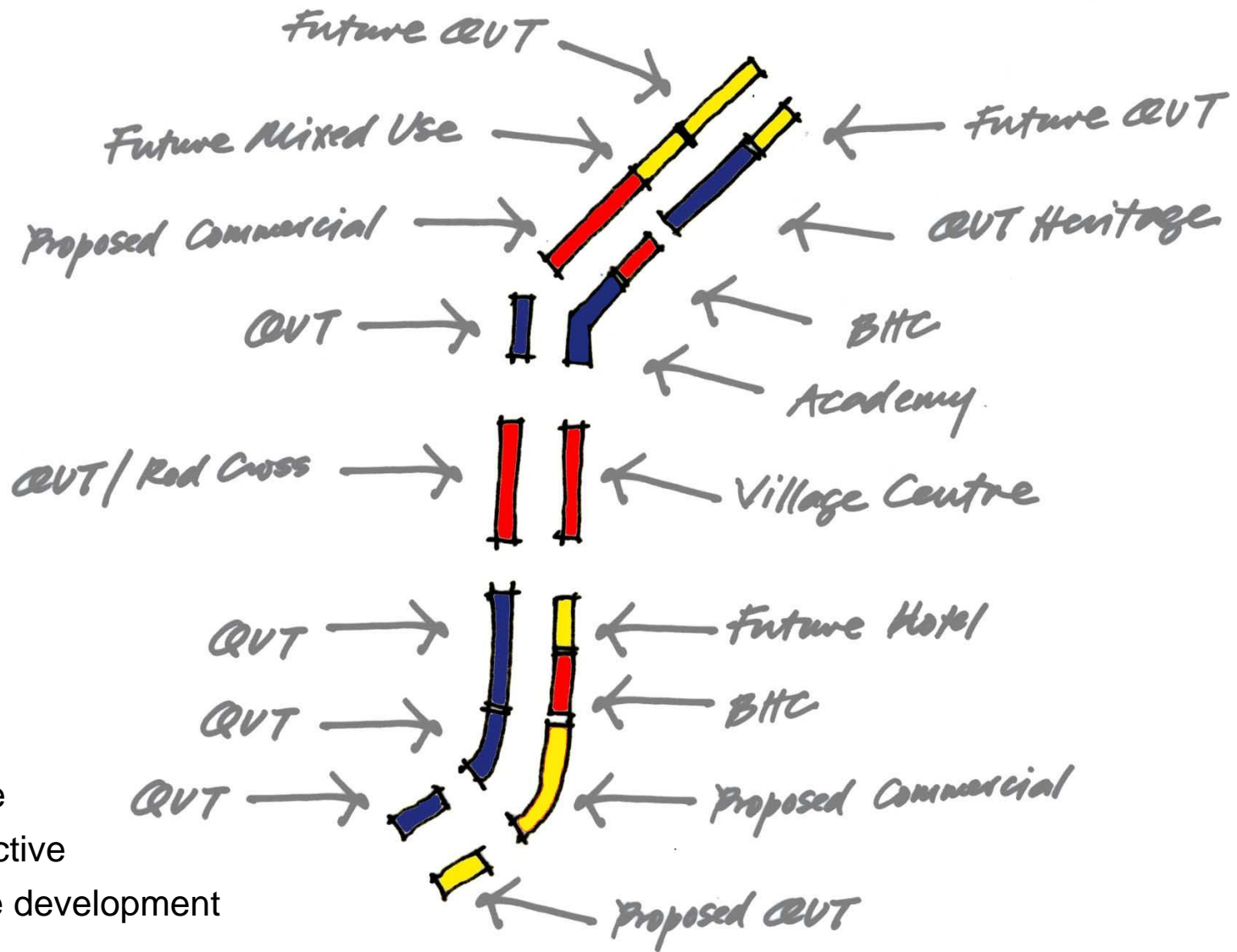












mainstreet kelvin grove







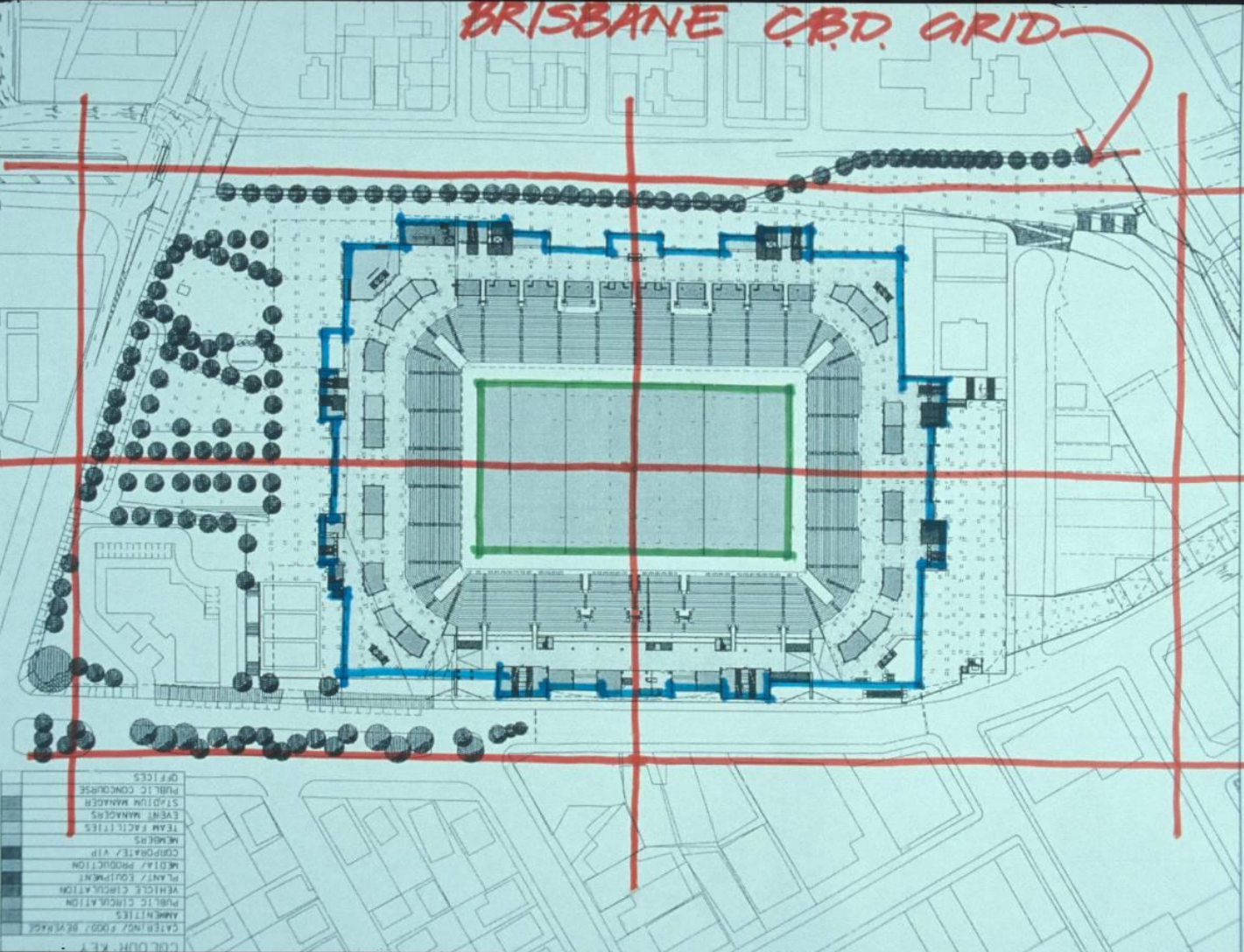
“ **A GOOD CITY LOCATION**  
is not enough if  
**THE BUILDING DESIGN**  
sends all the wrong messages  
or is just plain wrong.....”



BRISBANE CBD GRID

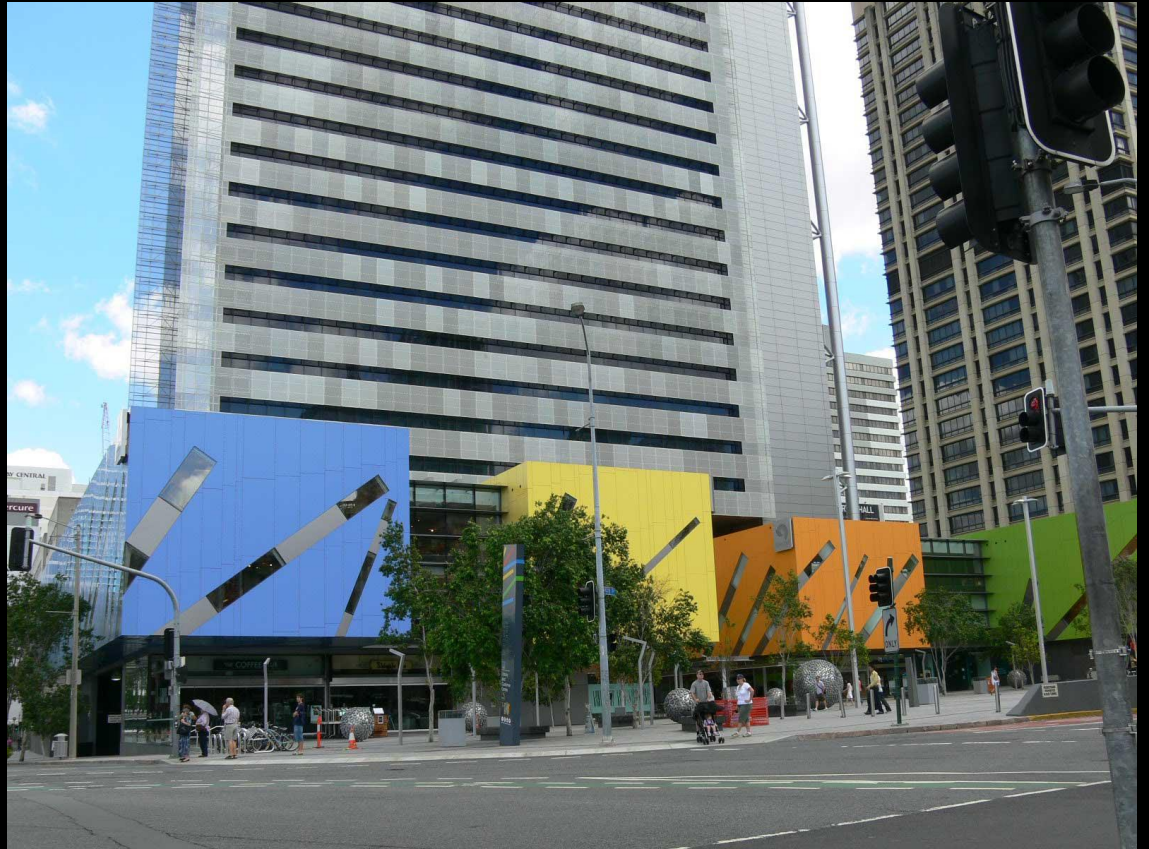
LANG PARK REDEVELOPMENT

FLOOR PLAN - LEVEL 1 (R.L. 13.00)



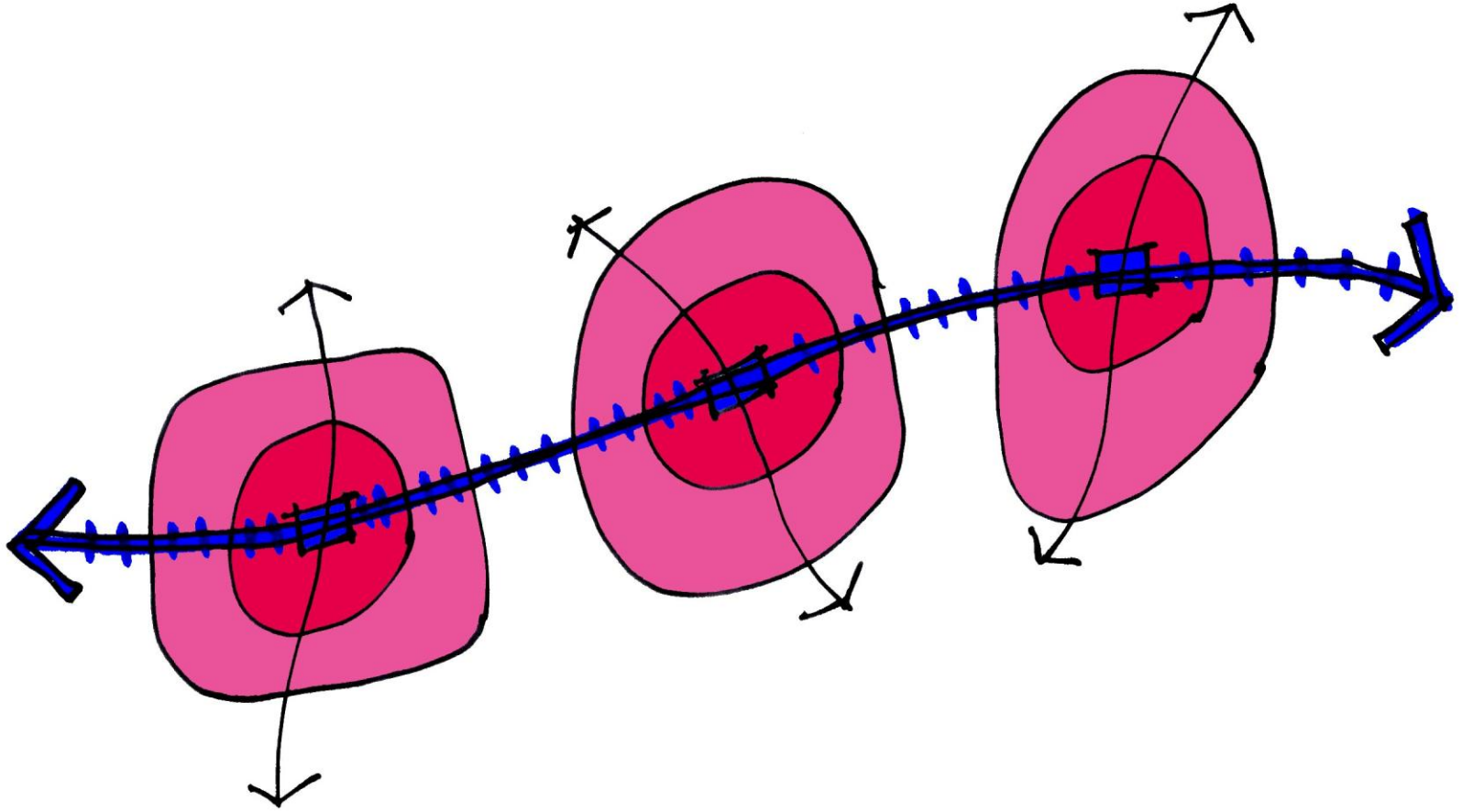
- COR. DR. R.E.Y.
- CATERING: SPOON BEVERAGE
- MARKET STALLS
- PUBLIC CIRCULATION
- VEHICLE CIRCULATION
- PLANT & EQUIPMENT
- MEETINGS / PRODUCTION
- CORPORATE / VIP
- MEMBERS
- TEAM FACILITIES
- EVENT MANAGERS
- STADIUM MANAGER
- PUBLIC CONCOURSE
- OFFICES



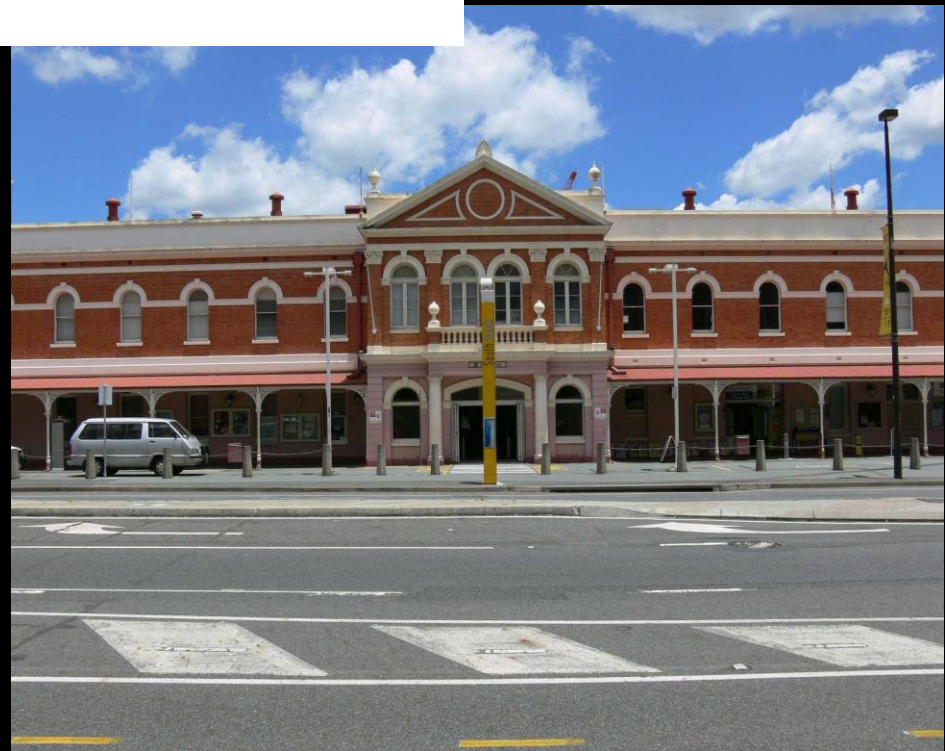
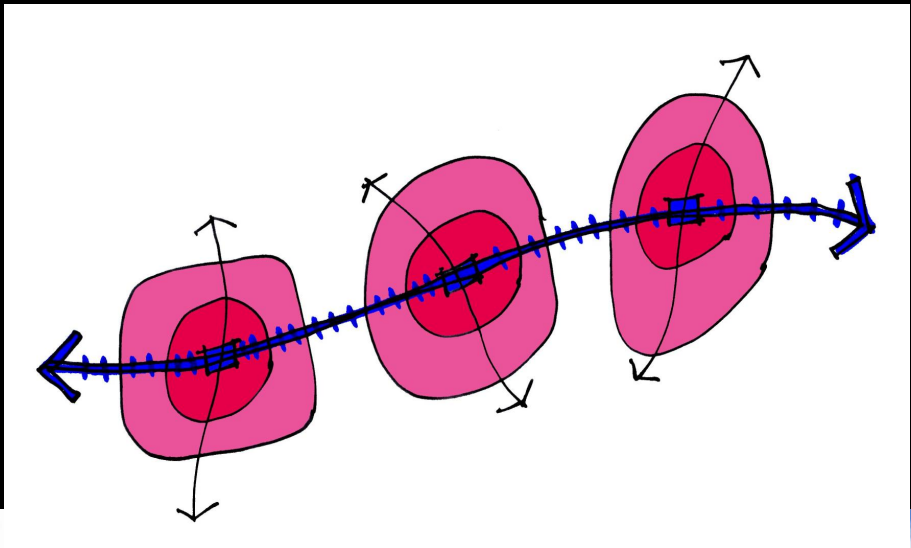










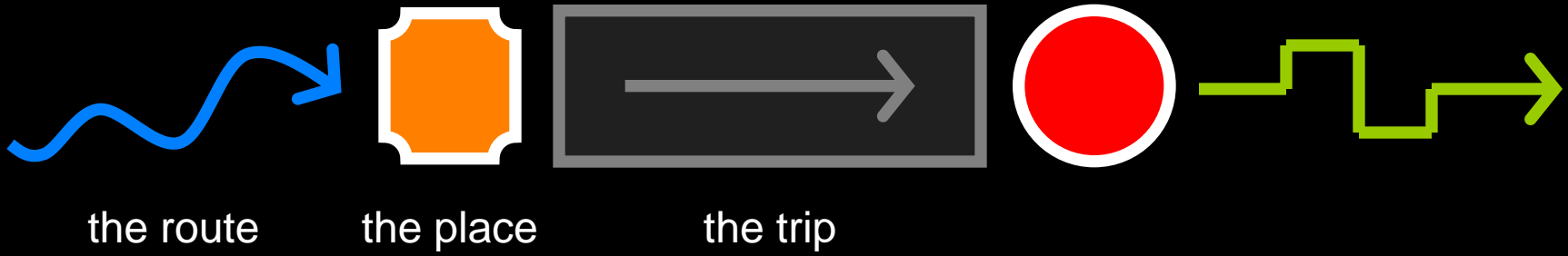


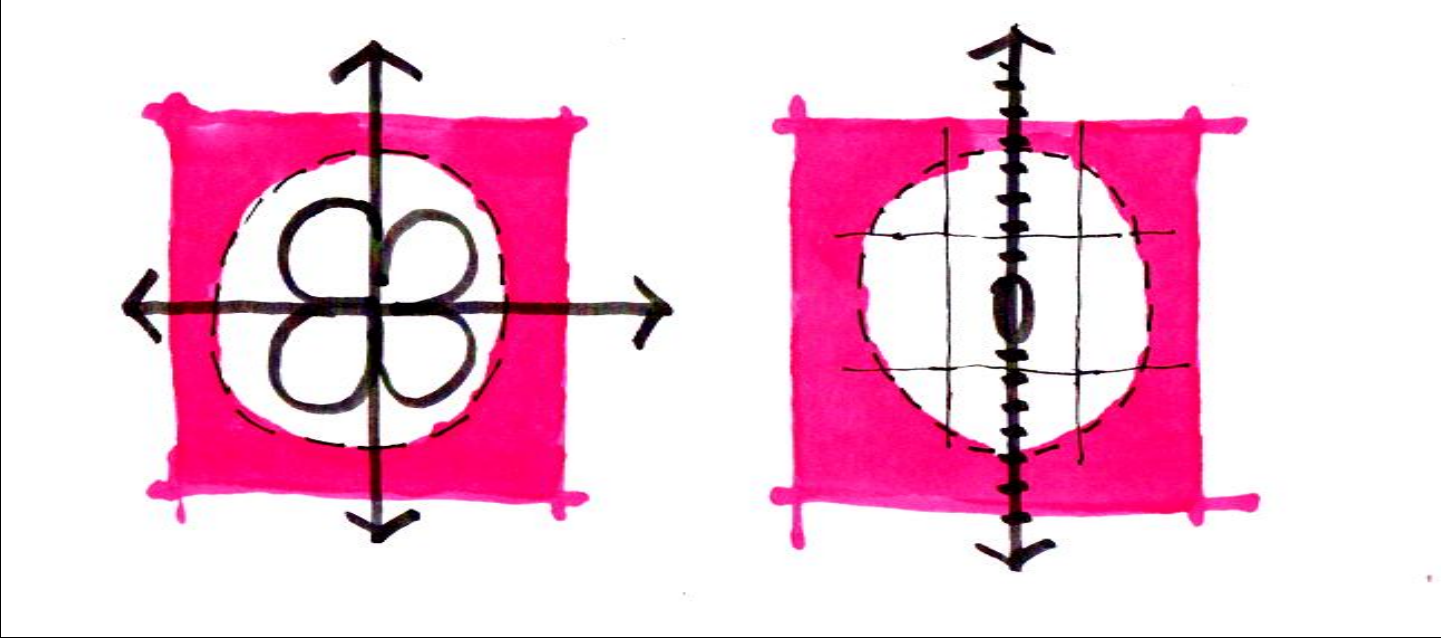




Images courtesy of TransLink



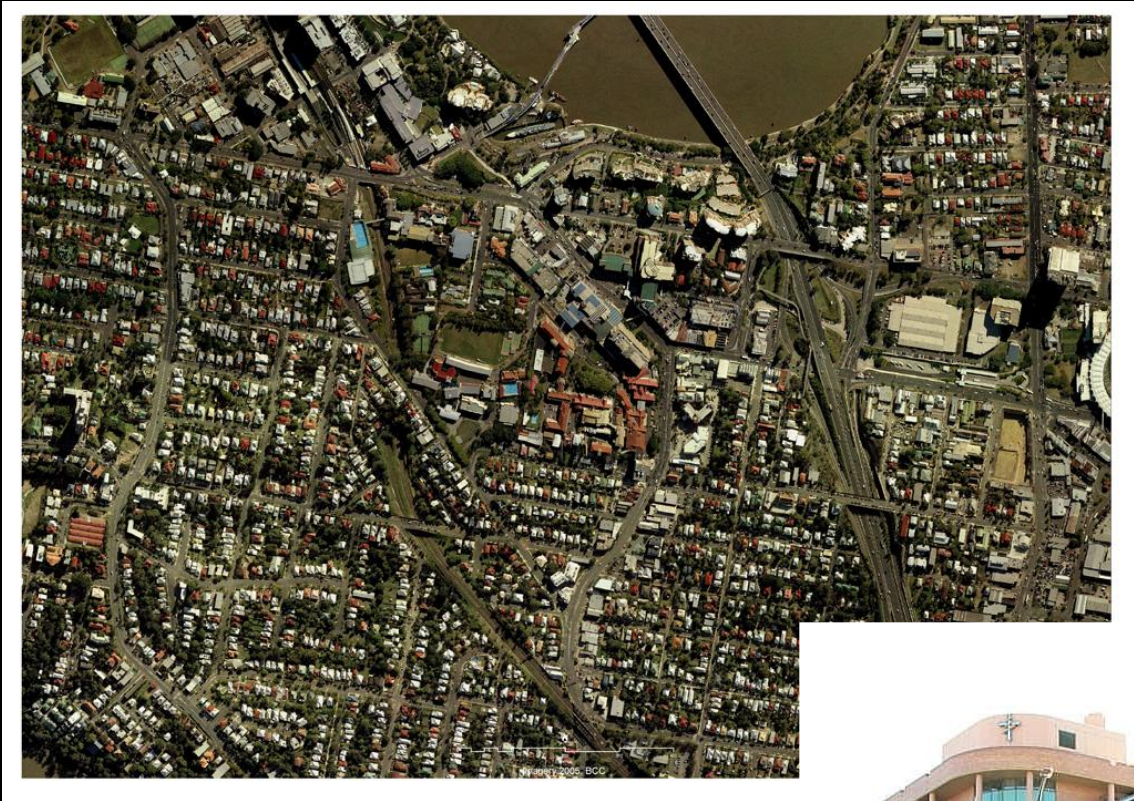












Google Earth

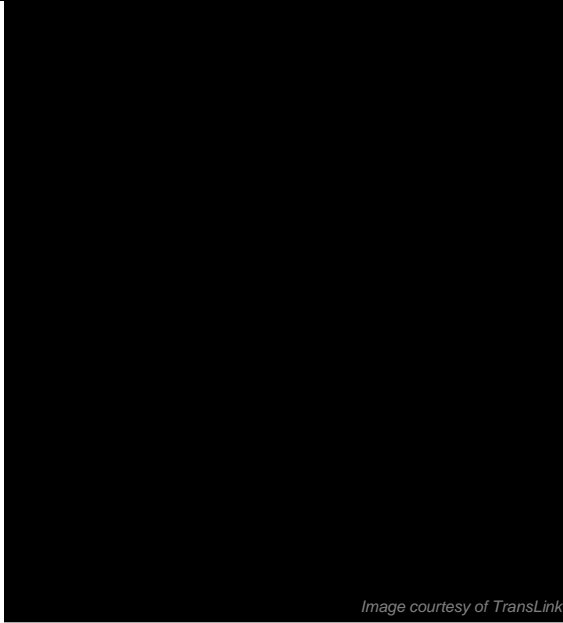


Image courtesy of TransLink



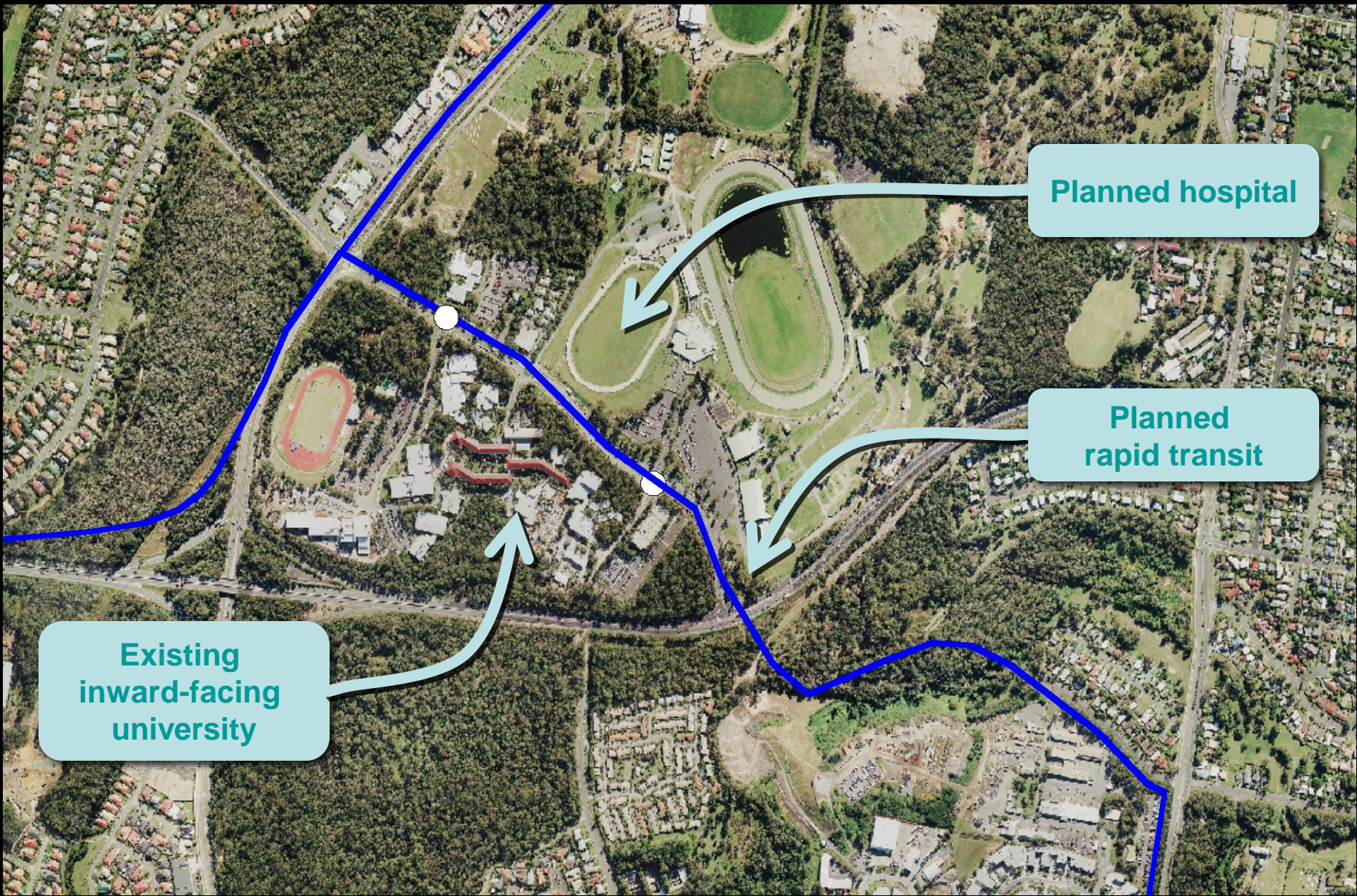
Mater Hill



aa orthogonal view SS\_2







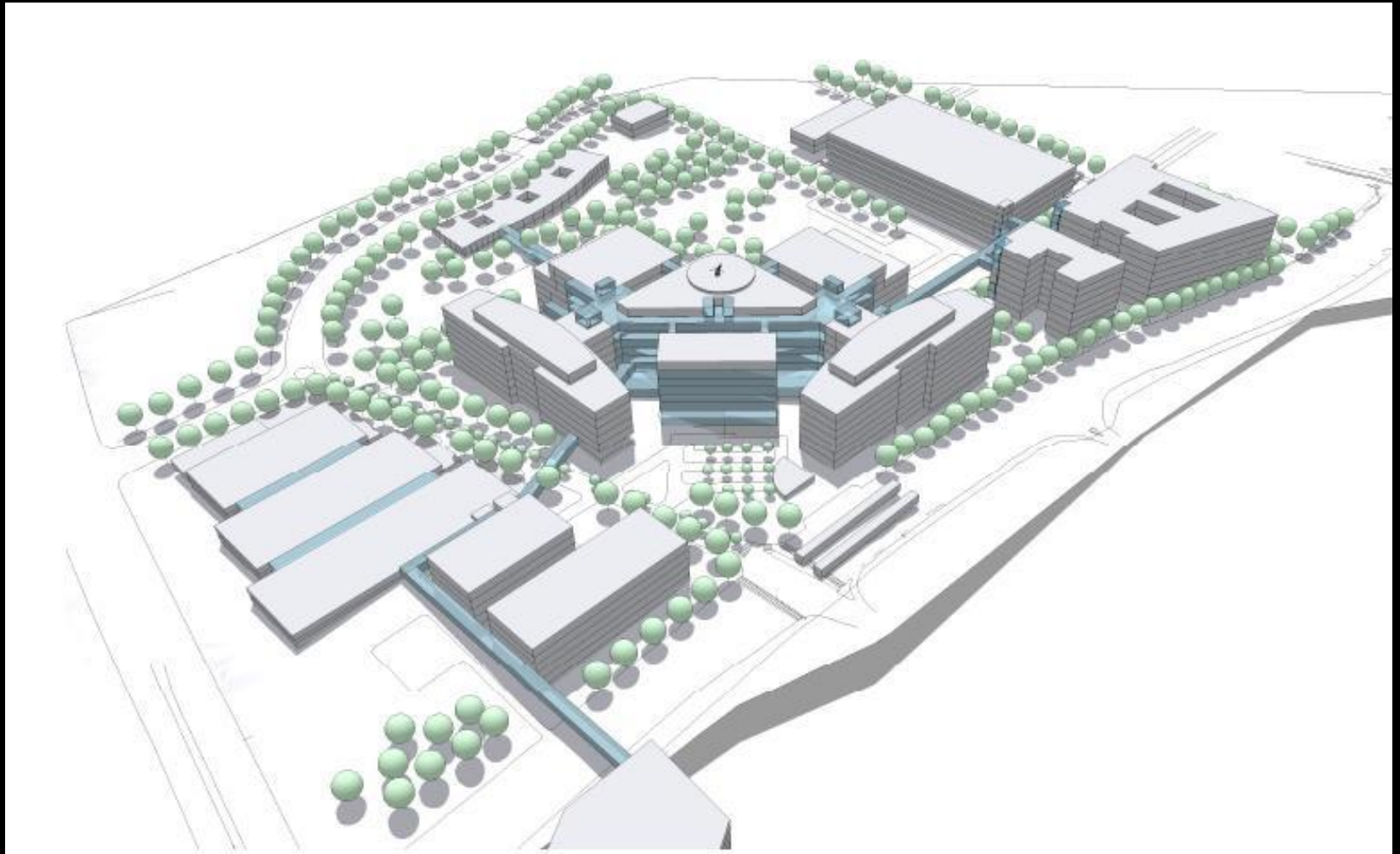
Planned hospital

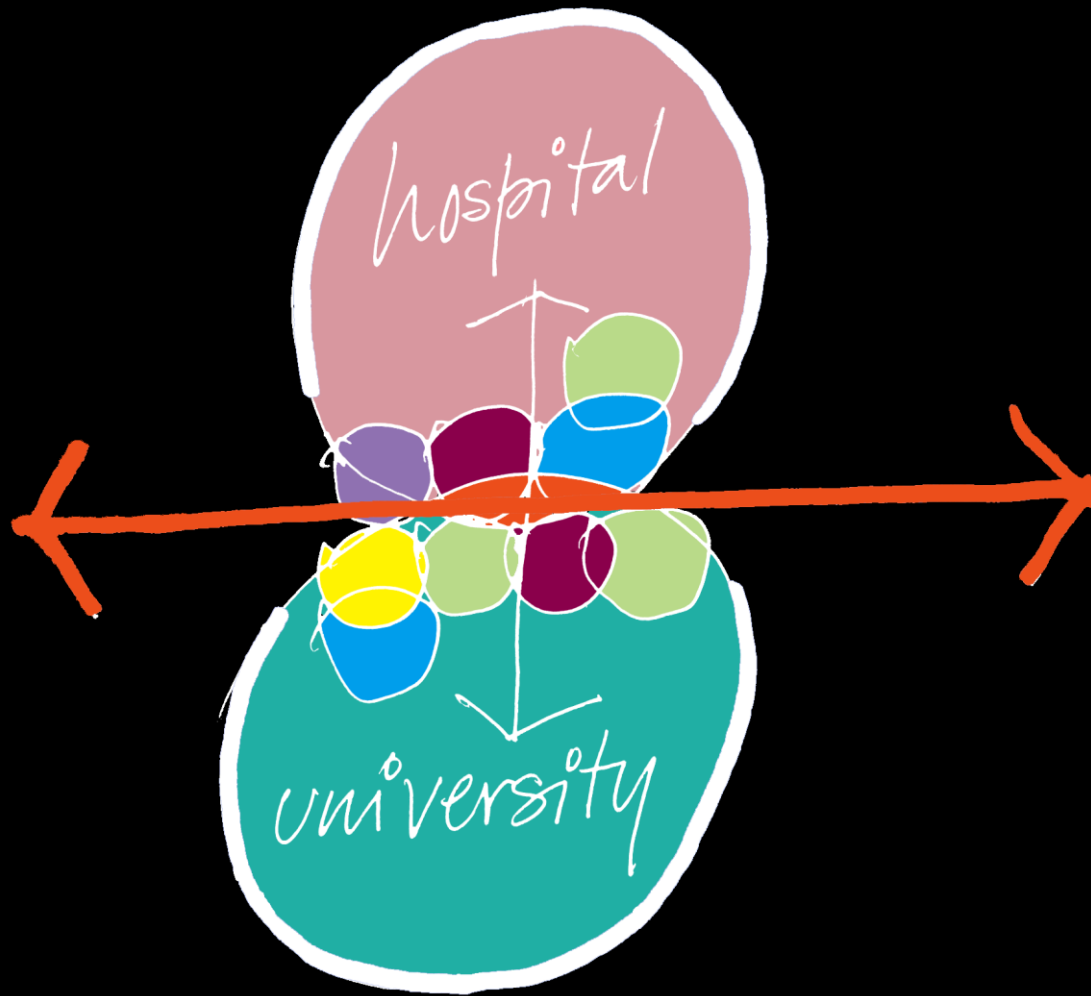
Planned rapid transit

Existing inward-facing university

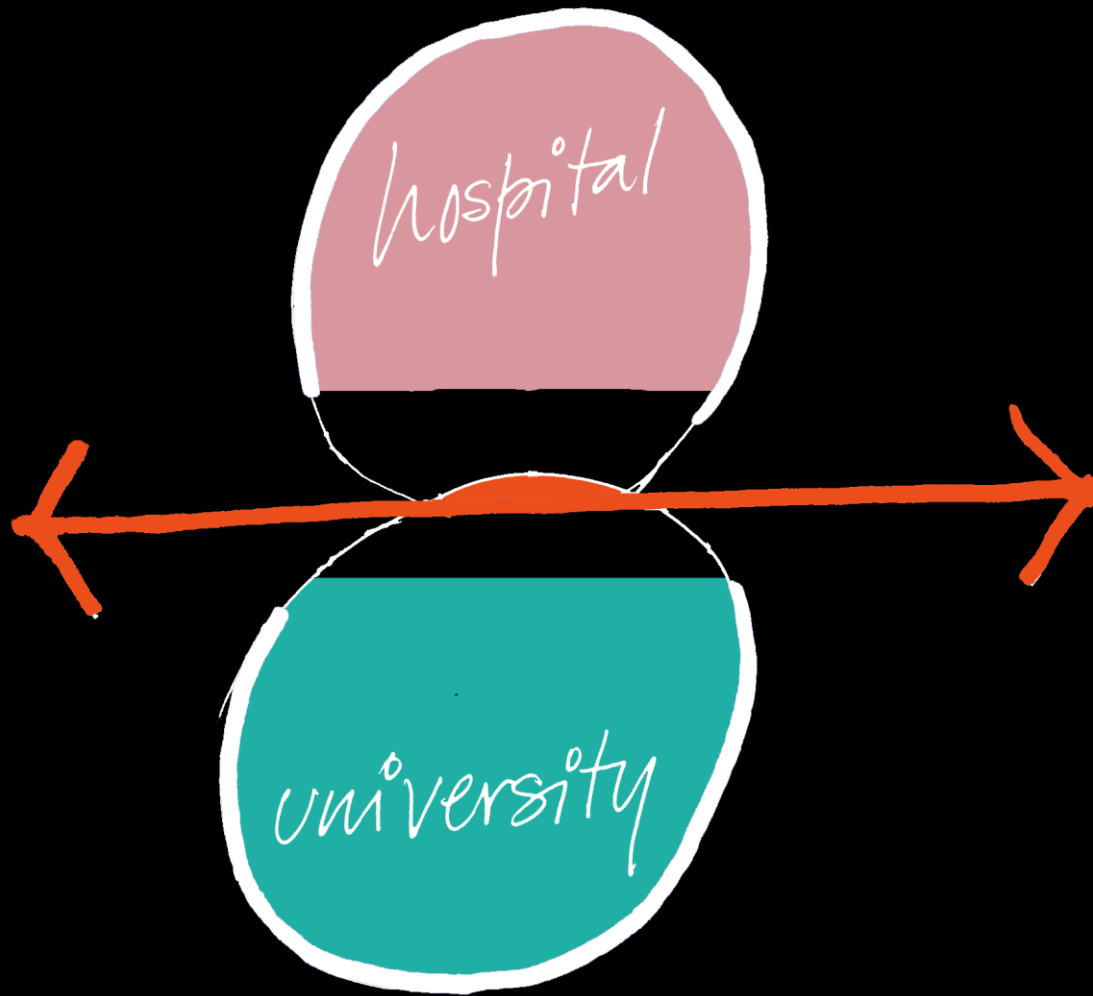
Image courtesy of the Gold Coast City Council





















Images courtesy of Queensland Transport

**Concept plan**

This concept plan was developed during planning for the rail station and will be subject to change during the master planning process.

The site is approximately 14 hectares in area and bounded by the Pacific Motorway, Scottsdale Drive and Coromandel Lane.

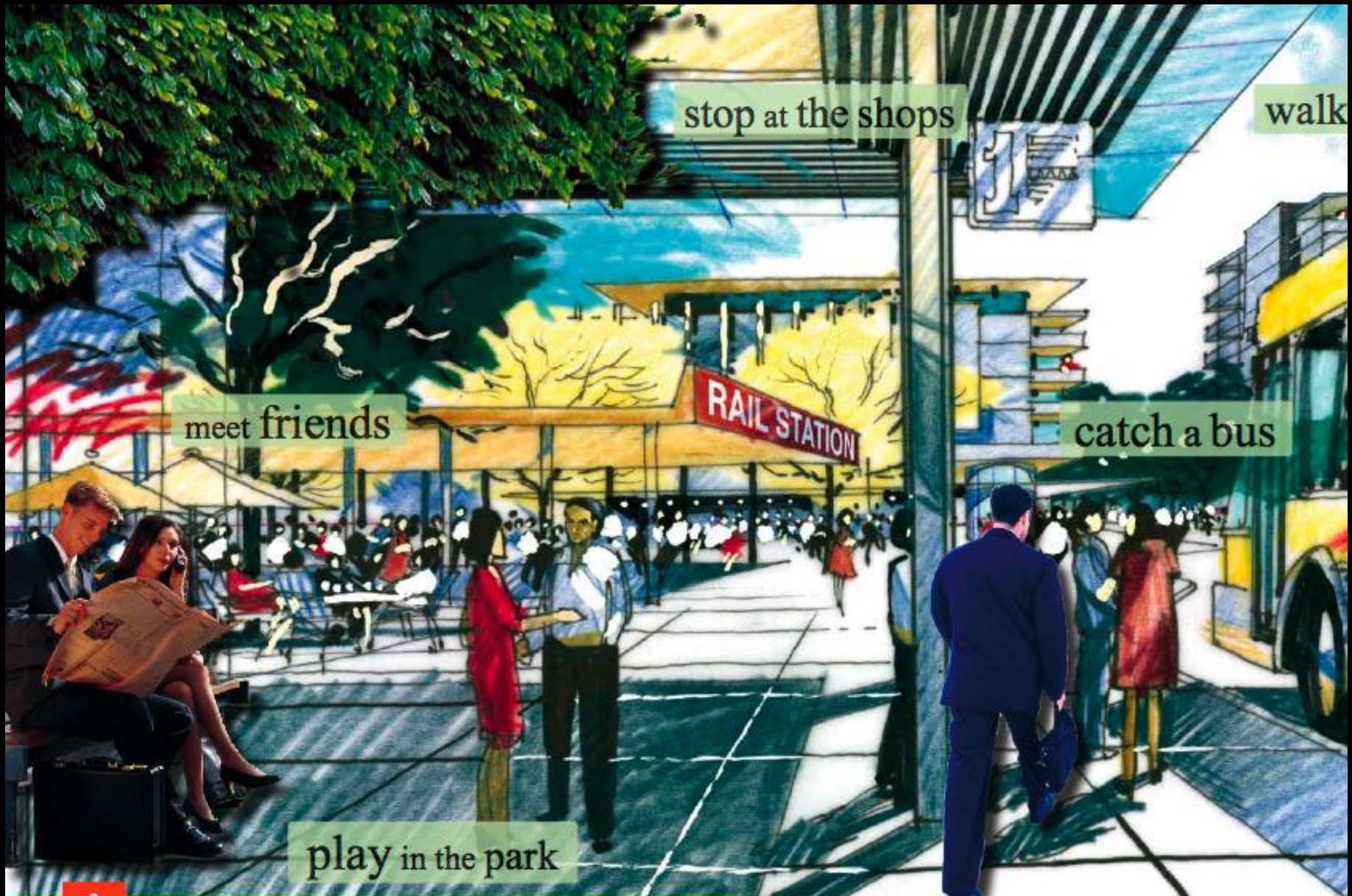
The location and design of new office buildings will provide a noise barrier and visual screen from the Pacific Motorway.

Queensland Transport, Village Vision, 2007

**LEGEND**

- Residential
- Commercial
- Retail
- Public plaza
- Mixed use (residential, commercial & retail)
- Existing residential
- Open space
- Industrial land
- ✕ Varsity Lakes station
- Rail to Robina
- Future rail extension





stop at the shops

walk

meet friends

catch a bus

play in the park

The way we design our cities  
has a **social impact**.



# EKISTICS: Anthropos: sustainability components

- self-esteem
- human interaction
- spirituality
- emotion/love
- personal safety

Fookes 2000 quoting Doxiades 1968

The essence of any city is its  
capacity for **social contact**.



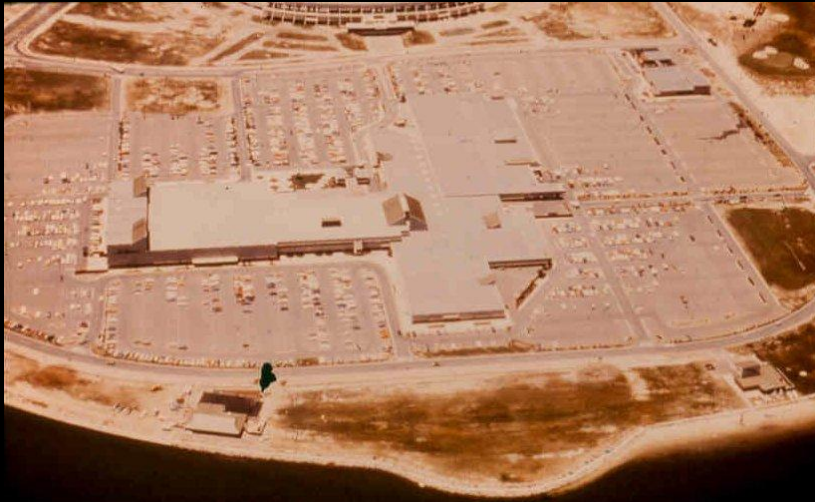


# The importance of the public realm

- socially
- physically
- economically
- culturally
- democratically



**Who owns this place?**



# Democracy





Legibility

Monotony

Complexity

Disorientation



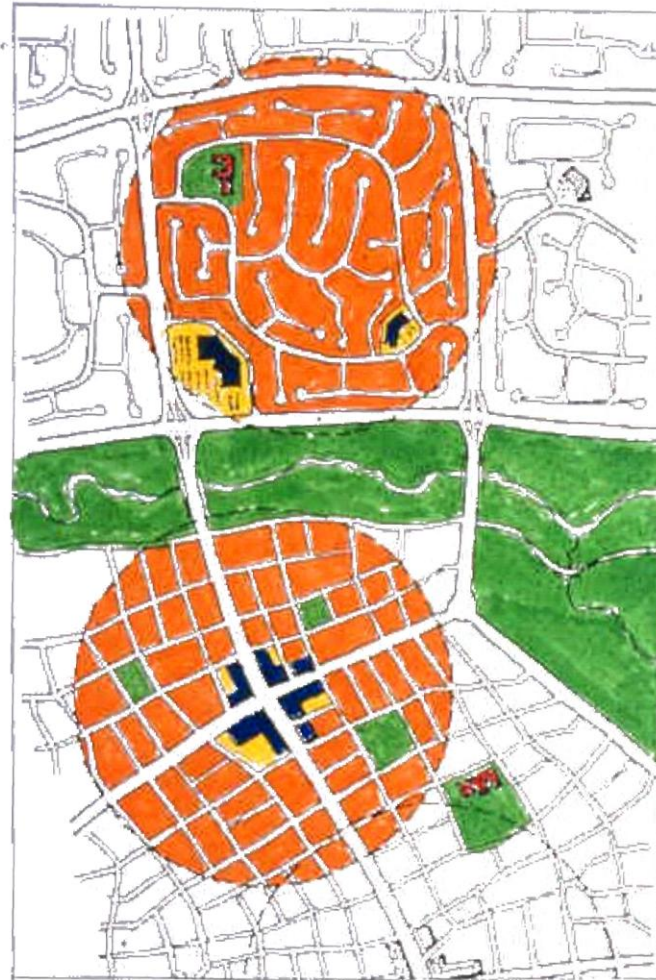
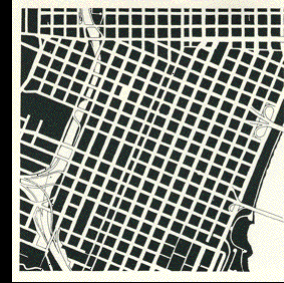
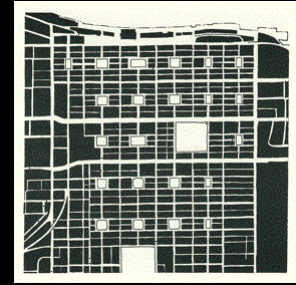
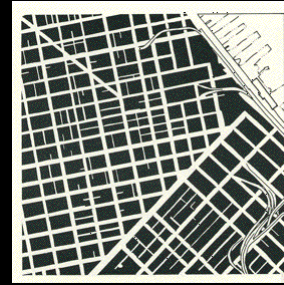


Figure 1: Comparison between conventional and Community Code approach to neighbourhood design.

*W.A. Community Code Draft 9/07*



The Weekend Australian Magazine  
10.11.2010

**Troubled Minds**  
Baby boomers on the front line of the dementia epidemic may be seeing their own future







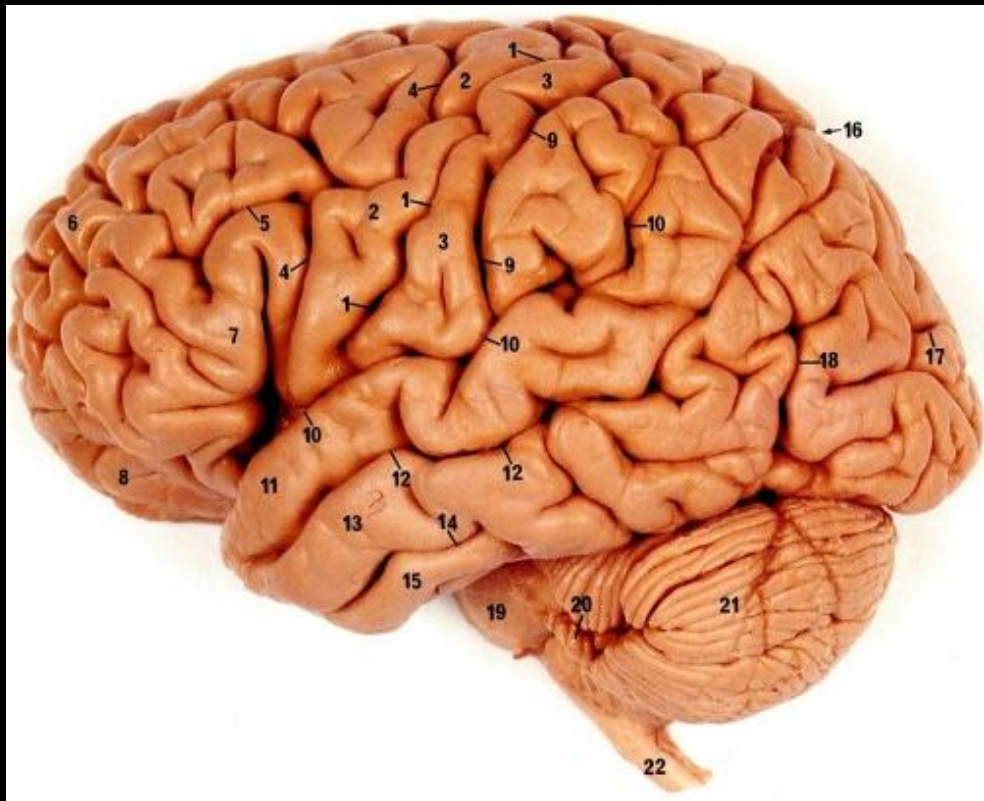
*Sun City, Arizona*











Ellis H, Logan B & Dixon A (1991)  
*Human cross-sectional anatomy*. Butterworth  
Heinemann, UK.



# NEURO<sup>TM</sup> POWER

## **The Neuroscience of Building High Performance Teams**

*Understanding the First Maxim of NeuroPower:  
Know Your 6 Intelligences, and When and How to Use Them*

**Peter Burow**

**PETER BUROW**

- 
- connections with **the past**
  - connections with **the place**
  - connections with **nature**











Laughter (is) nature's best medicine.

Laughter builds your health,  
reduces stress,  
dilates your arteries,  
breaks down cholesterol and  
builds the immune system.

Allan Pease

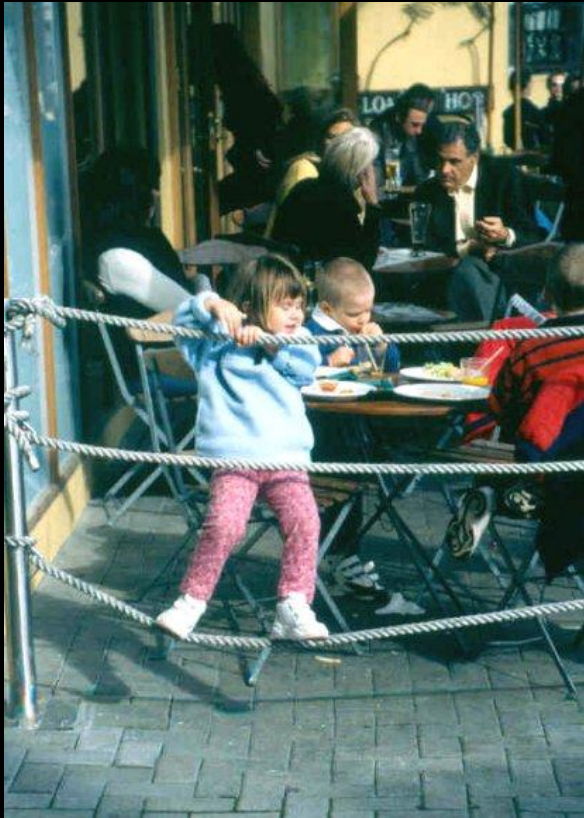
“Ten minutes of laughing  
is better than  
twenty minutes of jogging.”





















an inventory of  
community infrastructure

v

the *way*  
we design our cities



“For every **complex problem**  
there is a simple solution that is  
neat, plausible .....

What is viewed as “**best practice**”  
place-making and urban design has  
changed over the years ...

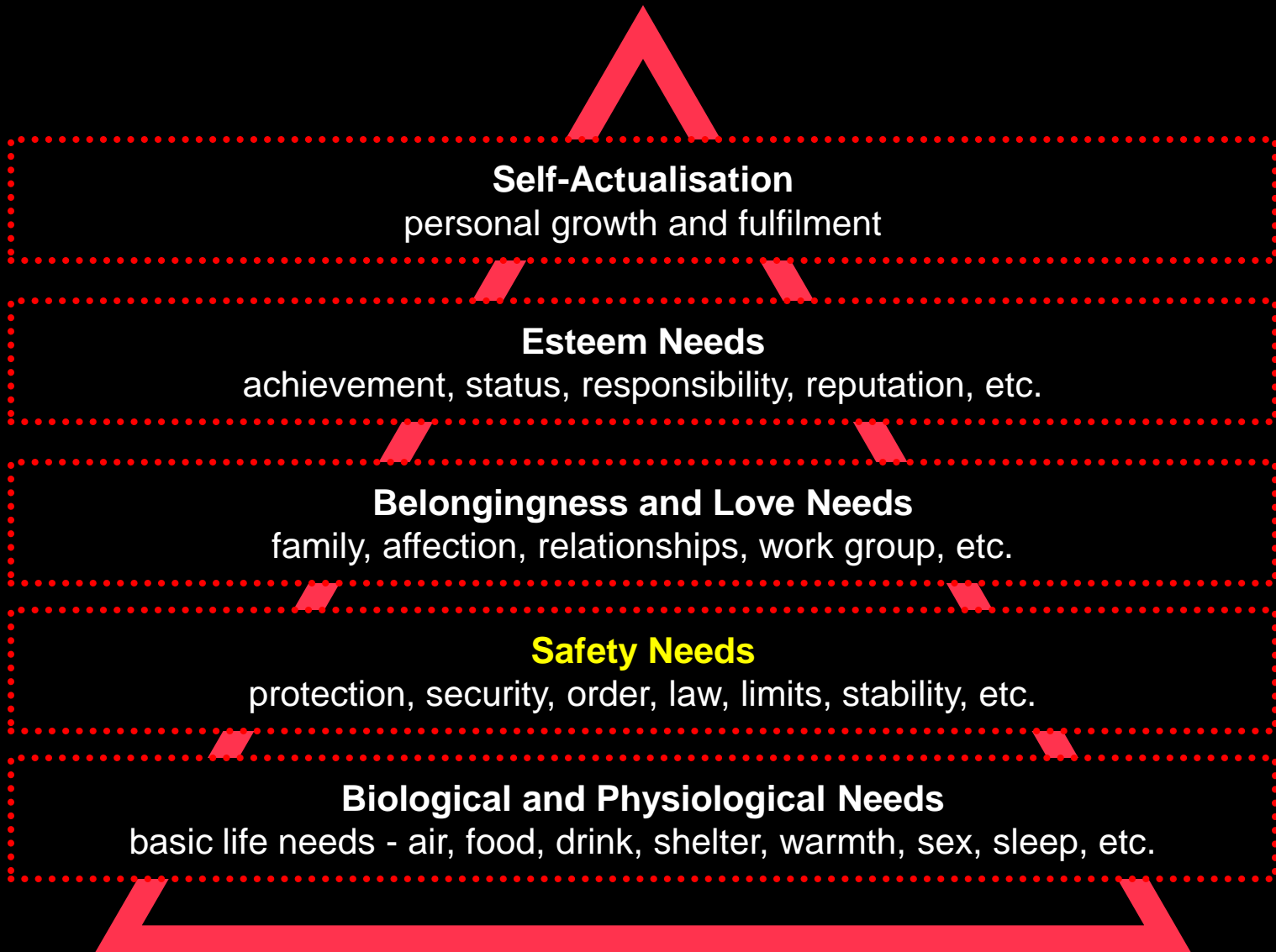
... or is still debated !



In part, our changed thinking is due to **changes in our world** and in part because we continue to learn from **experience.**

Emerging **CPTED** understandings  
have been influential in  
**changing**  
**urban design thinking**  
in recent decades.





## Maslow's Hierarchy of Needs

*Adapted from Alan Chapman (2004)*

CPTED

is a crucial role model or leader  
in creating good cities ?



and so .....?

1. Urban Design is a major CPTED strategy.
2. Delivery of CPTED is inherently multi-disciplinary, inter-agency, public / private .....
3. Society' s needs and urban design practices continue to change.
4. Urban design affects people.
5. Continuing to understand better the complexities and inter-relationships within CPTED, and between CPTED and other sustainability strategies, is essential (and must not be allowed to intimidate public policy and practice).
6. CPTED is inherently “ahead of the game” in understanding the role of the urban environment in better supporting human needs.
7. Understanding and practising CPTED is an important strategy for saving future money and pursuing sustainability.



# CPTED ?

Crime Prevention  
Through  
Environmental Design

# CPTUD ?

## Community Promotion Through Urban Design

John Byrne BArch BA MTP FPIA FRAIA