



CPTED ALL GROWN UP
SafeGrowth and Safe Alex

Jacques Roy, Mayor - Alexandria, LA — jacqroy@aol.com
Gregory Saville, AlterNation LLC — gregorysaville@gmail.com

CPTED all grown up – Cutting crime citywide with SafeGrowth and Safe Alex

CPTED implementation has been underway for decades producing successes and failures. Some places institute checklists or CPTED guidelines while others create design committees. Even the UN Habitat produces policy papers on Safer Cities. But citywide crime rates ebb and flow seemingly impervious to CPTED implementation. National surveys indicate CPTED is still not an integral part of city planning and development.

Responding to a jump in city crime, Mayor Jacques Roy in Alexandria, Louisiana instituted the Safe Alex program 3 years ago. Safe Alex incorporates the SafeGrowth philosophy that aims to embed both 1st Generation and 2nd Generation CPTED within urban development and planning. This presentation describes Alexandria's experience and shows how neighborhood leadership teams, empowered with CPTED knowledge, collaborate with city departments to tackle blighted homes and integrate safety into the fabric of neighborhood development.

Recent statistics reveal dramatic declines in crime categories in Alexandria. Presenters will outline how Safe Alex it is being implemented, how it's moving into the next phase, and how other cities might do the same.

Presenters:

Jacques Roy is the Mayor of Alexandria, Louisiana. He is nationally renown for his work to institute Smart Growth planning principles and SafeGrowth/CPTED strategies.

Gregory Saville is an urban planner and consultant in SafeGrowth. He is a co-founder of the International CPTED Association and editor of CPTED Perspective, the ICA newsletter.

An aerial photograph of a city street intersection. A large, multi-story building with many windows is in the background. The street is paved and has several cars parked or driving. A white delivery truck is visible on the right side of the street. The text "Loneliness and alienation need not characterize our urban life." is overlaid in yellow, italicized font across the middle of the image.

Loneliness and alienation need not characterize our urban life.

C. Ray Jeffery

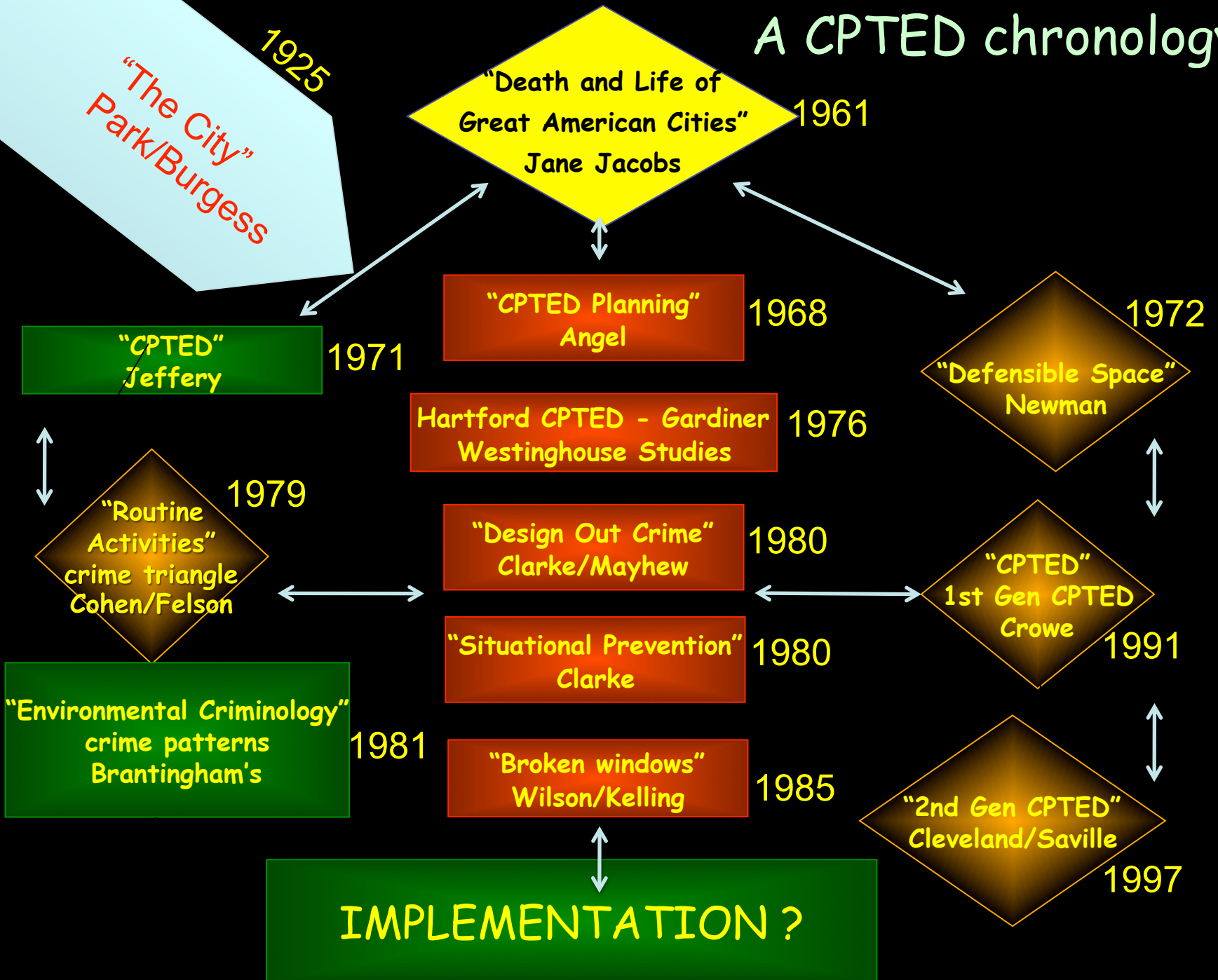


[We must] bring together separate communities to refashion urban environments [and] stabilize threatened neighborhoods. - Oscar Newman



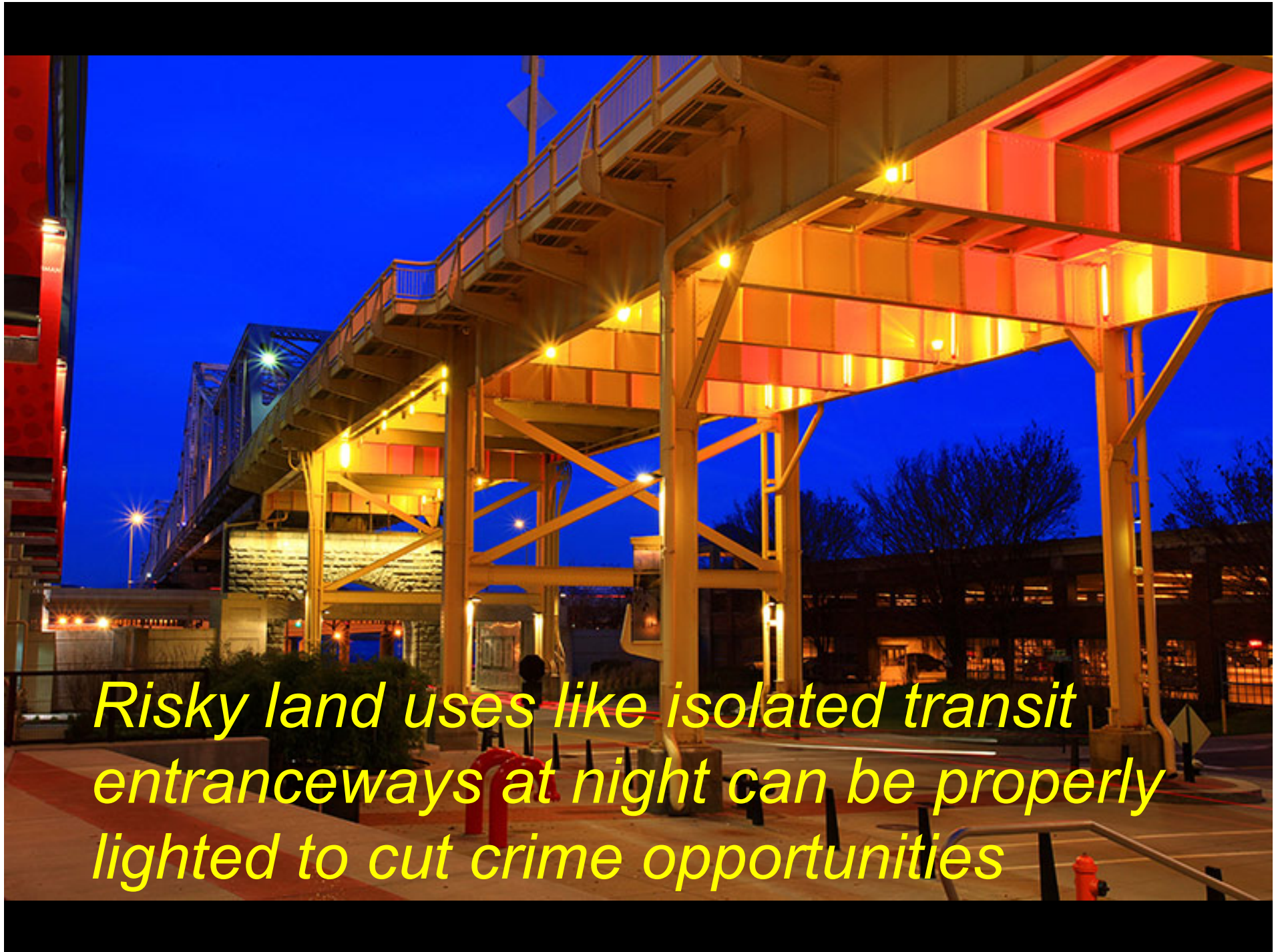
The public peace of cities is ...kept primarily by an intricate, network of voluntary controls and standards among people themselves. Jane Jacobs

A CPTED chronology





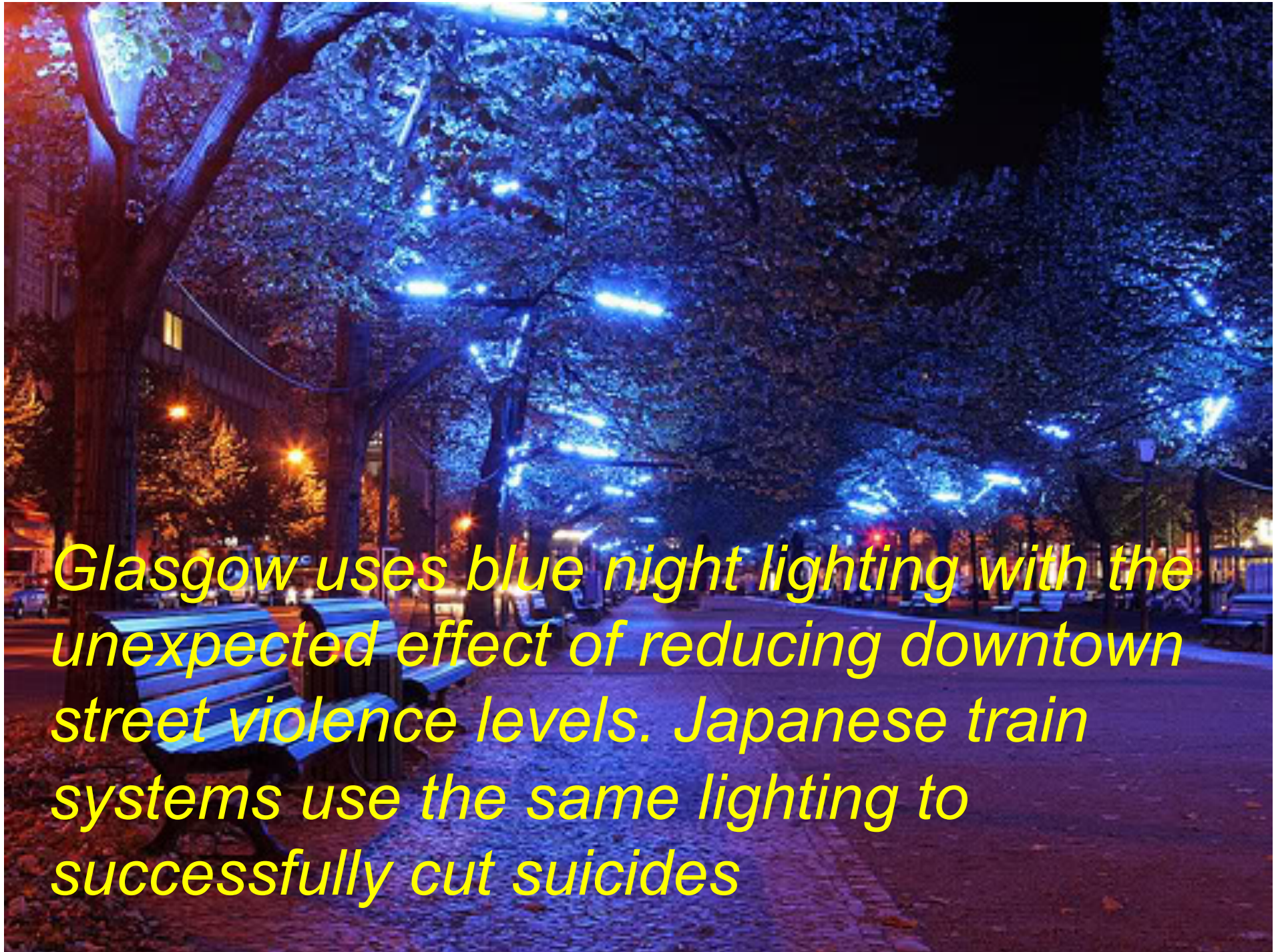
*What city is this?
Good design and planning helps produce
a lively, safe and active street in Bogotá*



Risky land uses like isolated transit entranceways at night can be properly lighted to cut crime opportunities



New Haven has urban crime problems, but creative painting in downtown alleys makes those spaces creative, interesting and fun...thereby attracting more legitimate users



Glasgow uses blue night lighting with the unexpected effect of reducing downtown street violence levels. Japanese train systems use the same lighting to successfully cut suicides

WE KNOW THAT CPTED,
 CAREFULLY
 DIAGNOSED AND
 PRESCRIBED,
 CAN CUT CRIME -
 HOW CAN WE
 MORE EFFECTIVELY
 AND COHERENTLY
 IMPLEMENT IT
 IN POLICY
 ...ASIDE FROM
 INNEFFECTIVE,
 CHECKLISTS
 AND DESIGN REVIEWS?

THE SafeGrowth MODEL: SIX ELEMENTS OF EFFECTIVE SAFETY PLANNING

3

shaping structure, participants and timeline. Throughout the LISC network, many communities have produced "quality of life plans" and similar products as part of the commitment by LISC and its local partners to support comprehensive community development and what we call Sustainable Communities. Likewise, the public safety programs of MetLife Foundation Awards winners in Providence, Seattle and elsewhere have emerged from community planning processes.

Yet many such plans consider public safety as an isolated piece of the community development puzzle tackled through youth programs, cameras, citizen patrols and increased police presence. Isolating prevention from development means we miss opportunities to truly integrate crime prevention planning into interventions that seek to improve the physical, economic and social health of neighborhoods. The holistic nature of the SafeGrowth model emerges precisely because all the steps are purposefully integrated, resulting in the formation of a long term plan to address community concerns.

Introducing the SafeGrowth model requires a careful scan of the available resources and the political climate of your target area. Programs and resources that already exist in a

The principles described above are most useful only when they are considered as part of an inclusive planning and problem-solving process, rather than as a checklist or an isolated analysis of a specific area or problem. SafeGrowth offers community developers and their public safety partners with a clear roadmap for integrating 1st and 2nd Generation CPTED principles into a process that ensures that public safety concerns are a connected part of planning for neighborhood well-being.

Neighborhood planning takes many different forms in urban communities with a variety of public and private institutions

The SafeGrowth Model: Six Elements of Effective Safety Planning

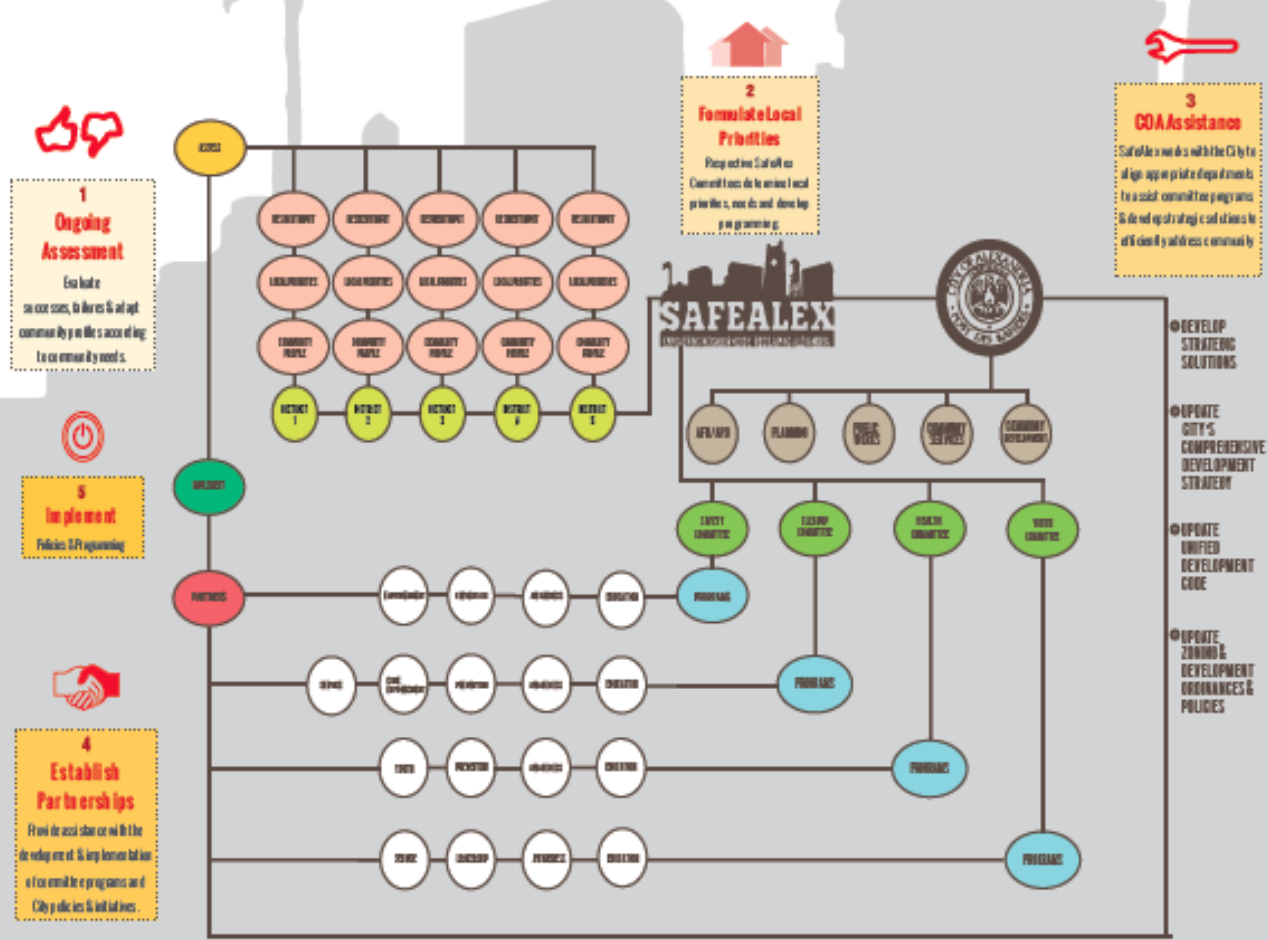


www.lisc.org/csi/strategies_&_solutions/

SAFEALEX

total

"If we are to eliminate the culture of crime, we must be united as a community, in a spirit of cooperation." - Mayor Jacques M. Roy

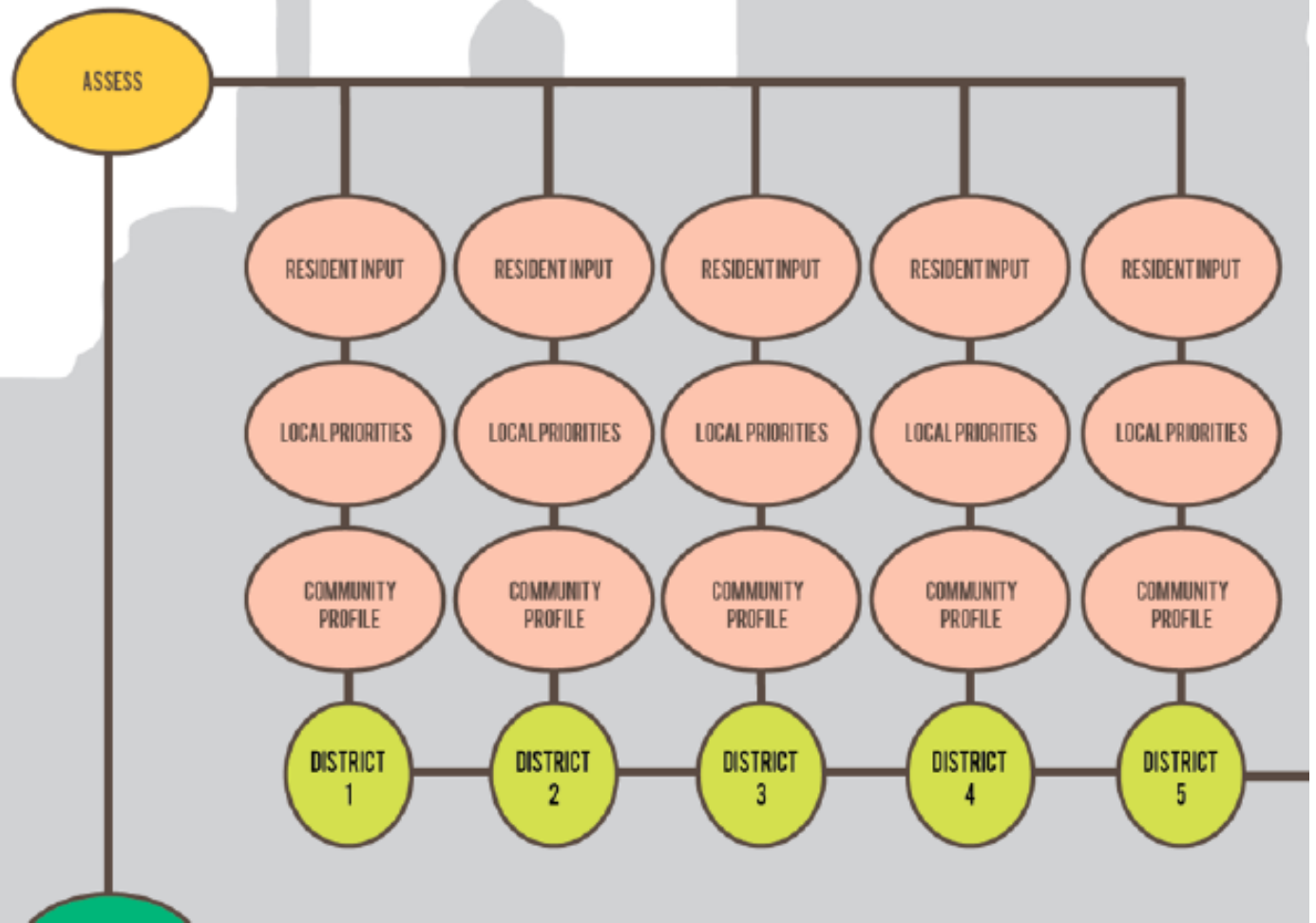




1

Ongoing Assessment

Evaluate successes, failures & adapt community profiles according to community needs.





2

Formulate Local Priorities

Respective SafeAlex
Committees determine local
priorities, needs and develop
programming.



3

COA Assistance

SafeAlex works with the City to align appropriate departments to assist committee programs & develop strategic solutions to efficiently address community



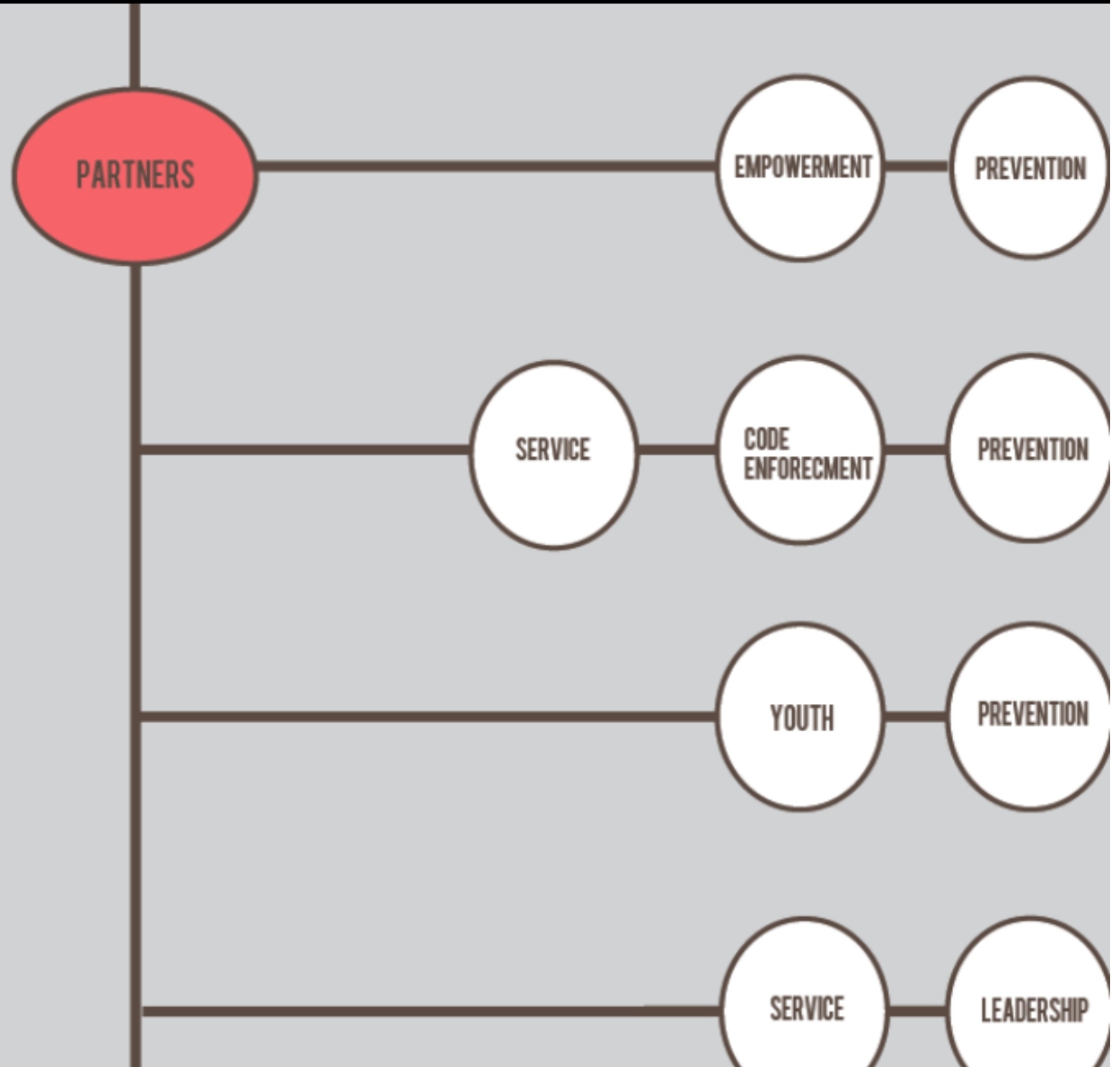
- DEVELOP STRATEGIC SOLUTIONS



4

Establish Partnerships

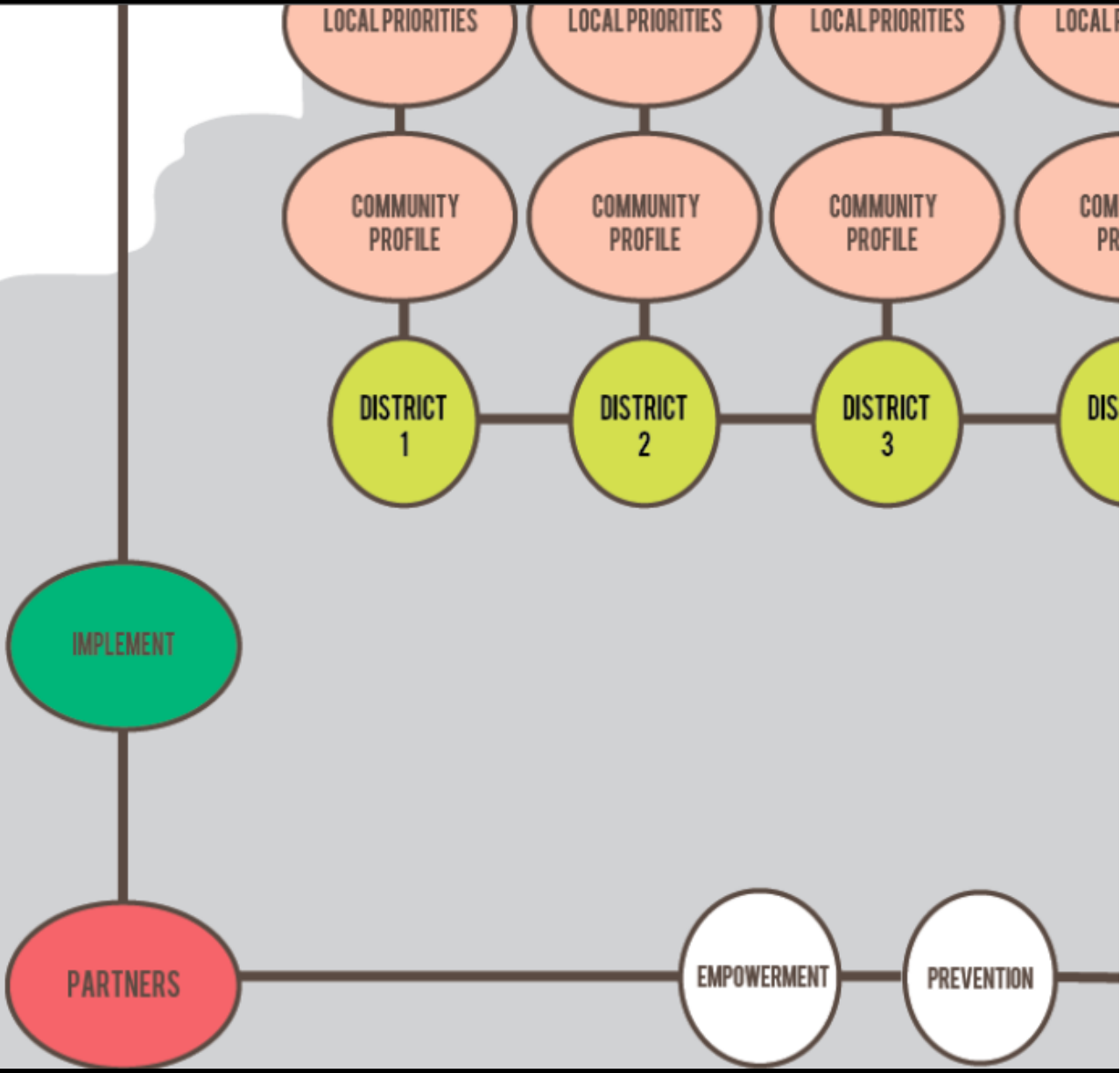
Provide assistance with the development & implementation of committee programs and



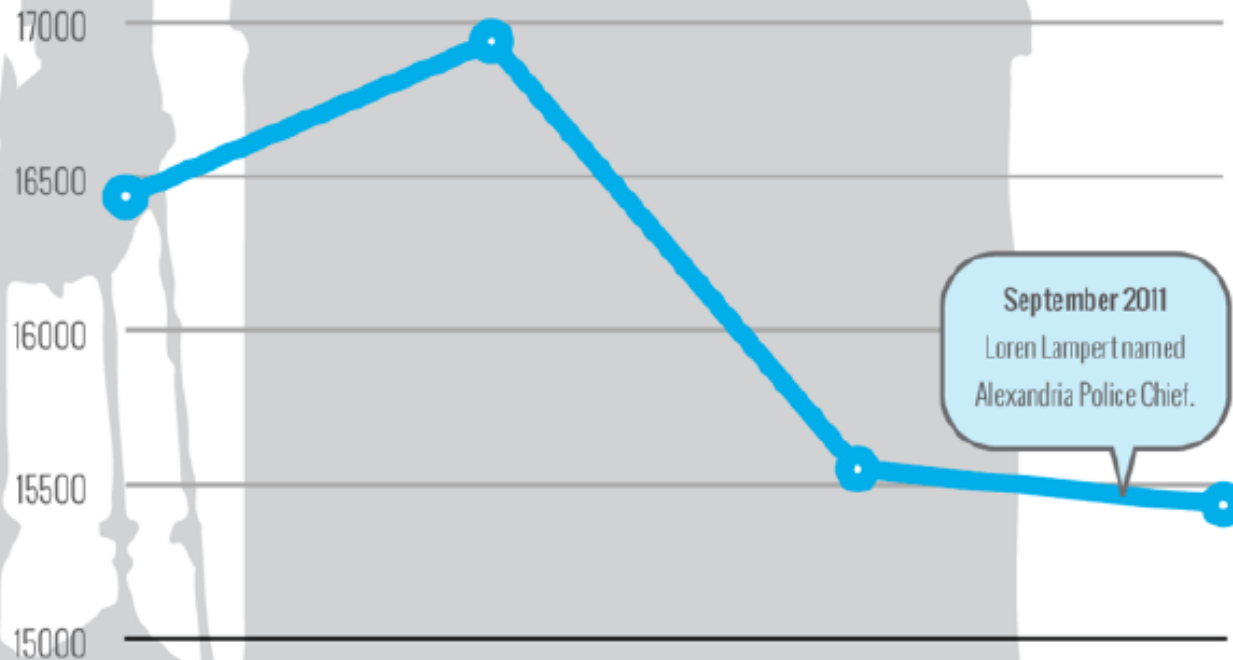
Evaluate
successes, failures & adapt
community profiles according
to community needs.



5
Implement
Policies & Programming



Alexandria Reported Incidents



September 2011
Loren Lampert named
Alexandria Police Chief.

2009

August 14, 2009
Policing Policies &
Goals declared by
Executive Order JMR
2009-2,
implementing in part
the IACP report.

2010

December 6-7, 2010
SafeGrowth Summit -
developed citywide
response to policing
needs.

2011

February 11, 2011
SafeAlex Initiative
formed by Executive
Order JMR 2011-2.

2012

September 2012,
SafeAlex launched
additional Youth,
Health, & CleanUp
components.