

# CPTED in Christchurch

Architects are researching crime hotspots in Christchurch to avert design mistakes in the rebuild. WILL HARVE reports.

## A city built to help fight crime

**A**rchitects are researching crime hotspots in Christchurch to avert design mistakes in the rebuild. WILL HARVE reports. The city's rebuild is a chance to create a safer environment. Architects are looking at how to design buildings and public spaces that can help prevent crime. This includes things like better lighting, clear sightlines, and secure entrances. The goal is to create a city that is not only beautiful but also safe for everyone.

**Christchurch City Council**

Sue Ramsay  
ICA Regional Forum 16 October 2014



**Christchurch City Council**



**Christchurch City Council**



**Christchurch City Council**



**Christchurch City Council**



Christchurch City Council



Christchurch City Council



Christchurch City Council



Christchurch City Council



Christchurch City Council



Christchurch City Council



Not enough... need more cones

Christchurch City Council



"The City of Christchurch thanks you for not molesting their traffic cones."



Christchurch City Council



### CPTED activity

#### CPTED framework

- CPTED into planning documents
- cross organisation cooperation

#### CPTED assessments

- responding to local concerns
- existing environments
- involvement of stakeholders

#### Rebuild CPTED

- reviewing plans
- technical, abstract
- close involvement with building professionals

#### SafeGrowth

- handing CPTED to the community
- 2<sup>nd</sup> generation principles

Christchurch City Council

### How much we do

Council

43

CERA / CCDU

18

Design Out Crime Advisory Service

24

SafeGrowth

19

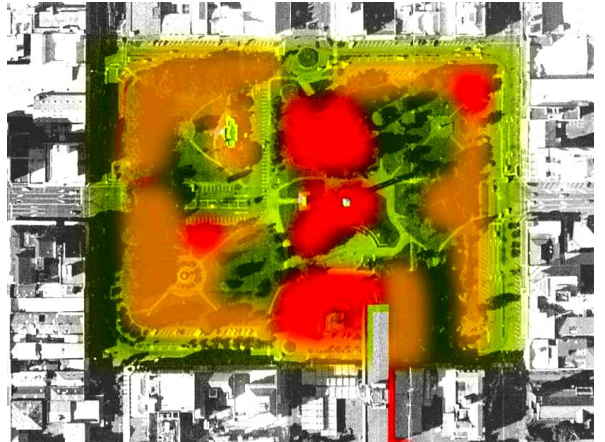
Christchurch City Council

### How we do CPTED

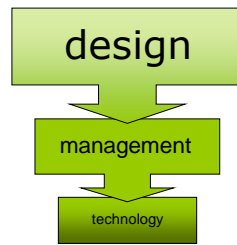
- public places and buildings
- focus of safety of people as well as security of property
- identify issues and treatments
- contextual
- process and method driven

Christchurch City Council

**CPTED method**



**CPTED hierarchy**

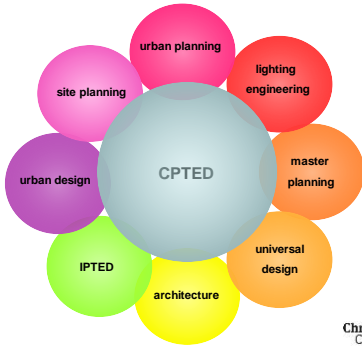


	DESIGN	MANAGEMENT	TECH
LACK OF INFORMAL SURVEILLANCE	REVIEW/ASSESSMENT OVERLOOKING ROUTINE	CONSULTATION RESIDENTS	LIGHTING C
LACK OF COMMUNITY COHESION	SITE PLAN/ CONNECTIONS	SUPPORT WORKERS	SECURITY A
	CREATE TEAM FOR SITE SCHEME ASSESSMENT INCL CONSULTATION	SITE SPECIFIC MAINTENANCE PLAN	PAVING C
	- GRATES	EMERGENCY ADVISOR	DEMO? C
	- ENTRY	COMMUNICATION PLAN WITH RESIDENTS	
	- COMMUNITY SPACE		
	- ACCESSIBILITY (PATHS)	ENTRY SIGNAGE	
	- VIEW FINDINGS	MAILBOX	
	- PARKING (LANDSCAPE)	TRIM SHELTER?	
	- LIGHTING	ESTIMATES PROGRAMMING	
		CONTINGENT	
		RISK ASSESSMENT	

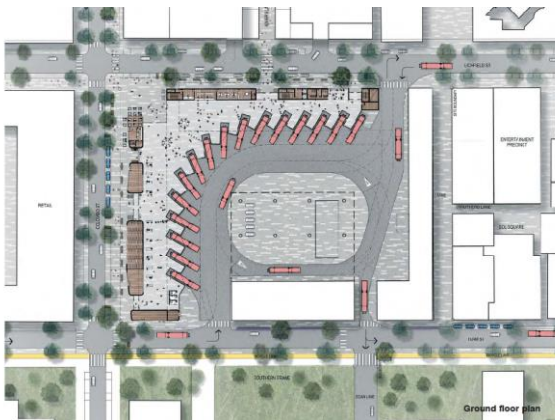
**CPTED integrated with partners**



CPTED integrated with other disciplines



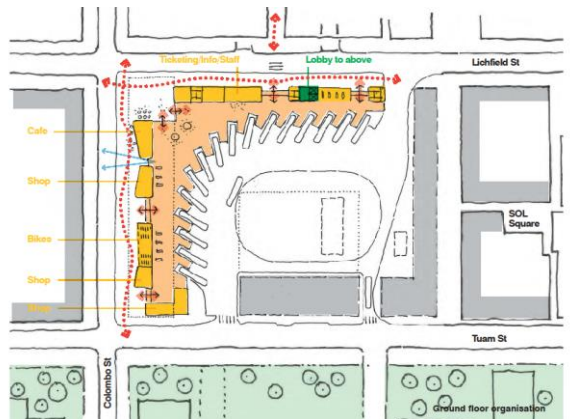
Passenger lounge + bus circulation



Pedestrian Flows



Key Destinations + Connections



Ground floor organization

**Concept and developed design**

30 safety issues identified, across  
11 areas of focus

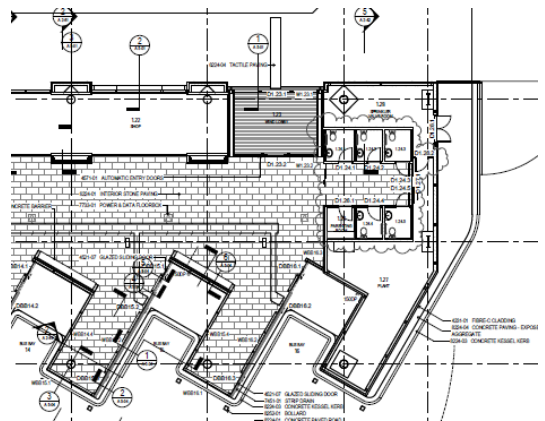
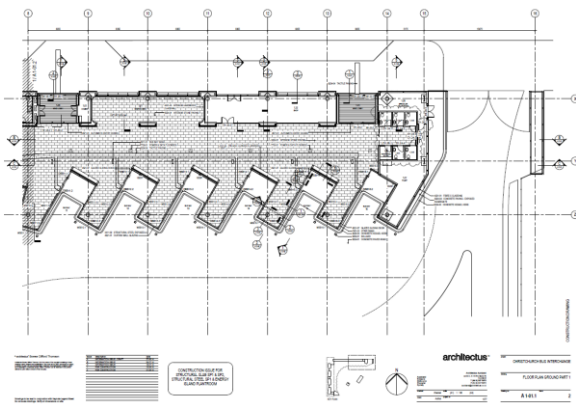
44 recommendations, of which  
24 accepted  
2 partially accepted  
5 not implemented  
1 not applicable

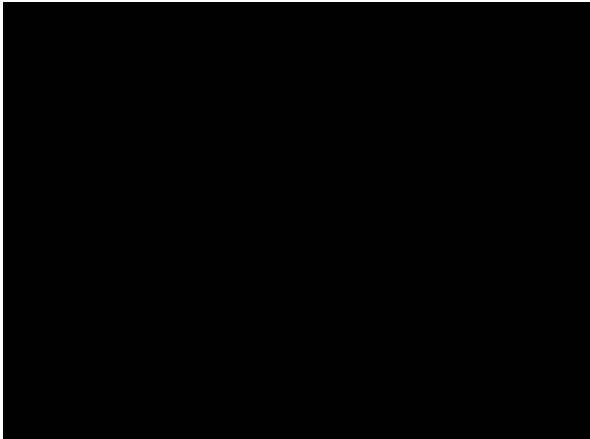
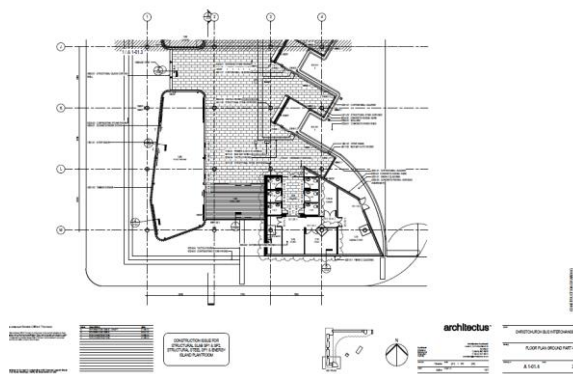
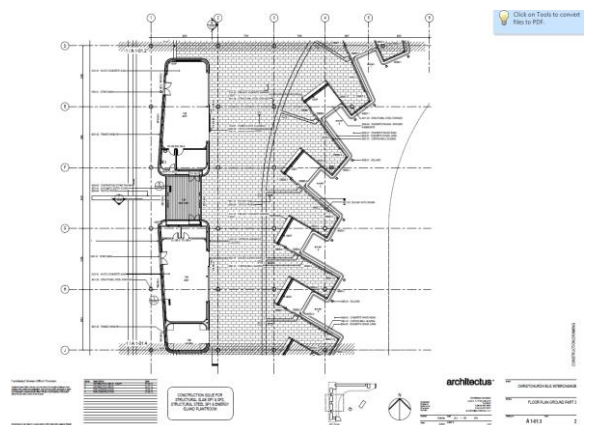
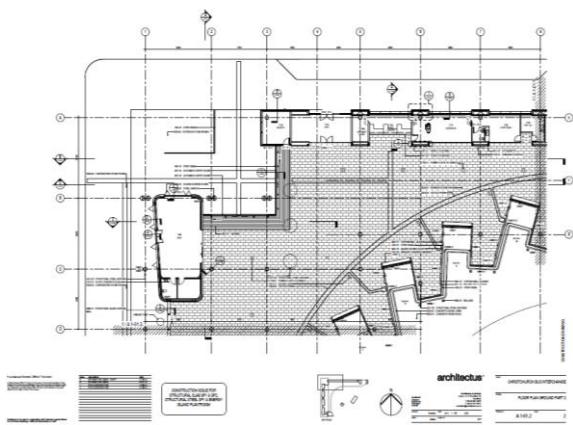
(12 will be resolved in detailed design)

80% of those that can be actioned have been  
included in the design

**Construction issue design**

30 recommendations  
plus 1 via streetscape redesign









sue.ramsay@ccc.govt.nz

