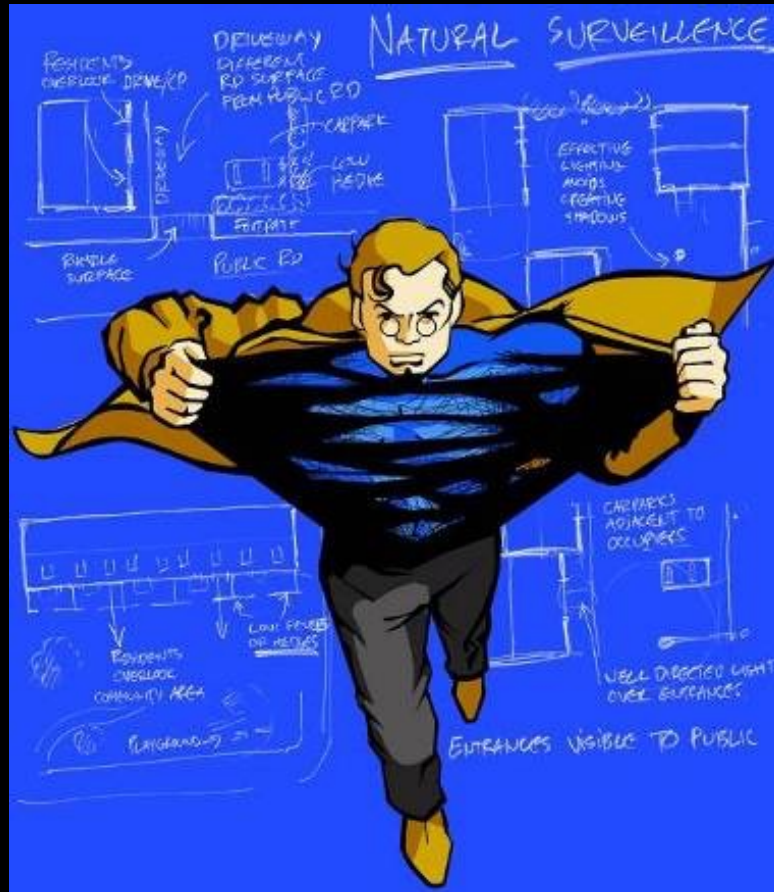


CPTED's contribution to safety in the Christchurch Bus Interchange





Architects are researching crime hotspots in Christchurch to avert design mistakes in the rebuild. WILL HARVIE reports.

A city built to help fight crime

Architects and designers make buildings and public places. They don't normally prevent crime. But there's a growing movement afoot to make architects do just that, and if this movement gets legs, Christchurch will be a global leader in the future.

modern city on a scale rarely possible", that the goal was to make Christchurch the "safest city in the world" and to build a body of work "recognised as best practice internationally".

Those lofty goals aren't just the city council's. The Canterbury Earthquake Recovery Authority is on board, promising in its Central City Recovery Plan and its Transportation Plan that crime

criminals, according to the theory, hate witnesses and so are less likely to commit crimes where they can be observed.

In building design, this means locating shops, offices, lounges and kitchens at the front of buildings, placing windows and doorways that overlook the street and public places. It's about eliminating "entrapment" spots, where criminals can lurk or drag or





Woolston Urban Forest

Boundary fences to include see-through pool style fences

Timber boardwalks for pedestrian access

Farm fence

Asphalt loop path

Kimihia Early Learning Centre and Parents' College

Church

To Ferry Rd

The forest will be dominated by these native species, and modelled on areas at Riccarton Bush and the former Papanui Bush.



Totara



Matai

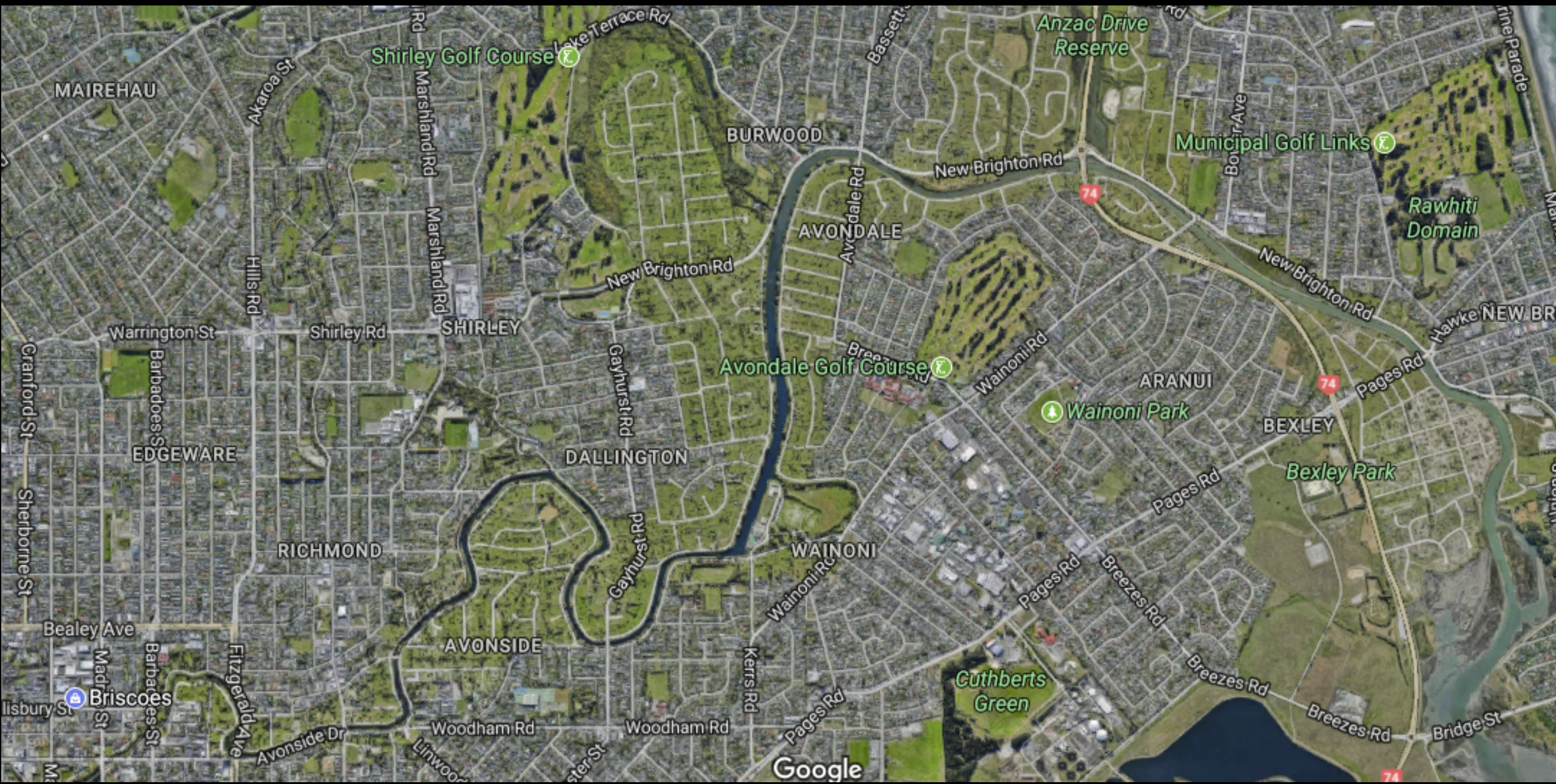


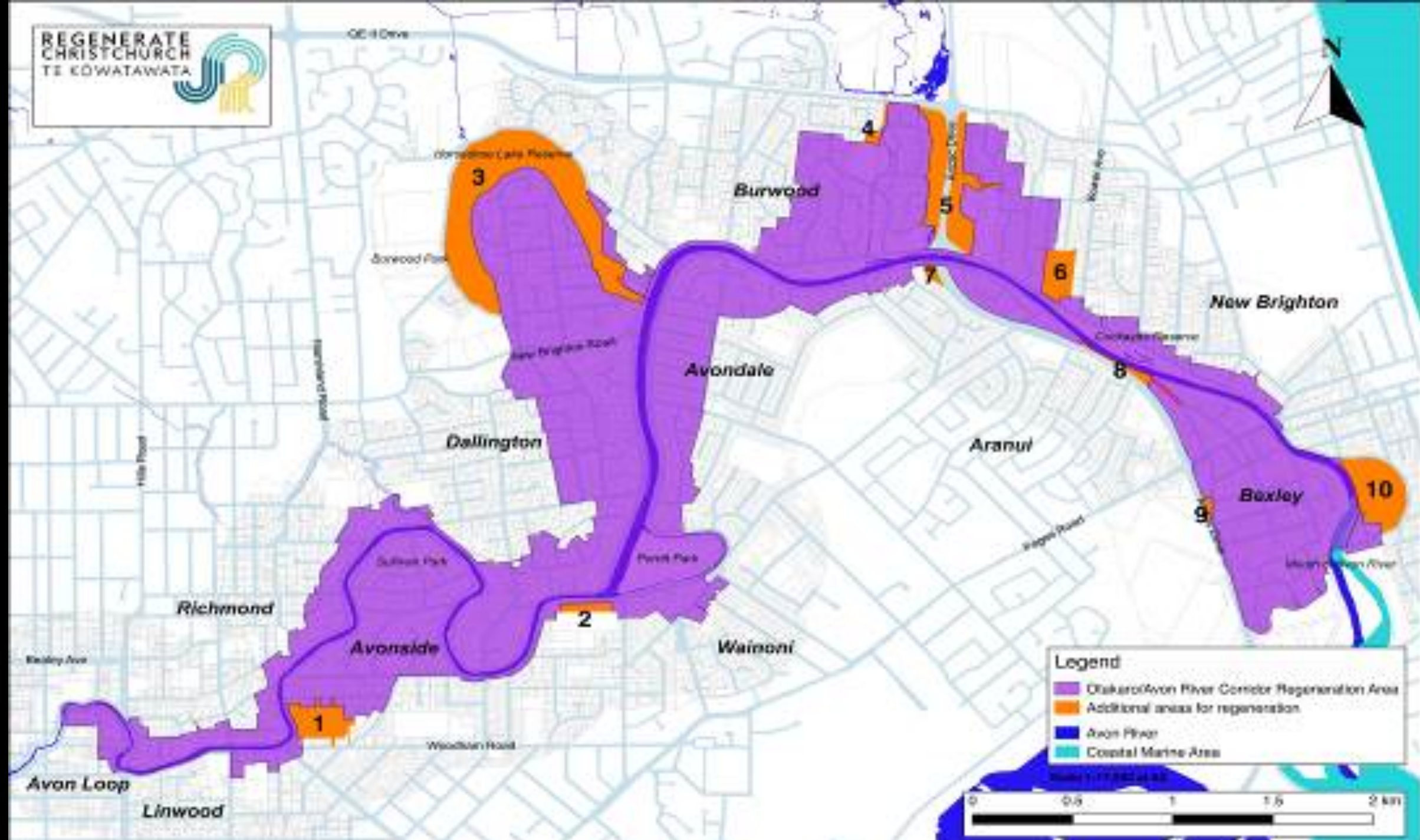
Kahikatea



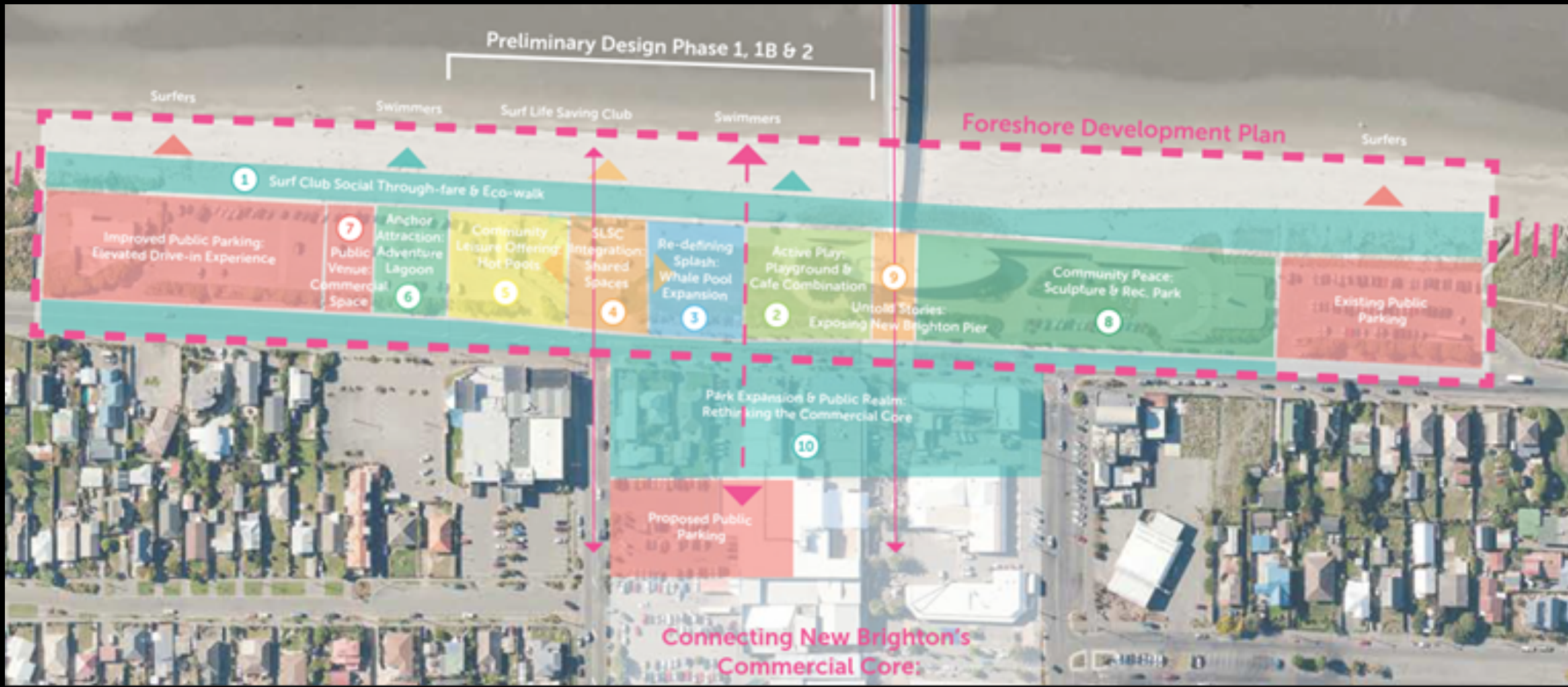












Preliminary Design Phase 1, 1B & 2

Foreshore Development Plan

Surfers

Swimmers

Surf Life Saving Club

Swimmers

Surfers

1 Surf Club Social Through-fare & Eco-walk

Improved Public Parking:
Elevated Drive-in Experience

7 Public Venue:
Commercial Space

6 Anchor Attraction:
Adventure Lagoon

5 Community Leisure Offering:
Hot Pools

4 SLSC Integration:
Shared Spaces

3 Re-defining Splash:
Whale Pool Expansion

2 Active Play:
Playground & Cafe Combination

9 Untold Stories:
Exposing New Brighton Pier

8 Community Peace:
Sculpture & Rec. Park

Existing Public Parking

10 Park Expansion & Public Realm:
Rethinking the Commercial Core

Proposed Public Parking

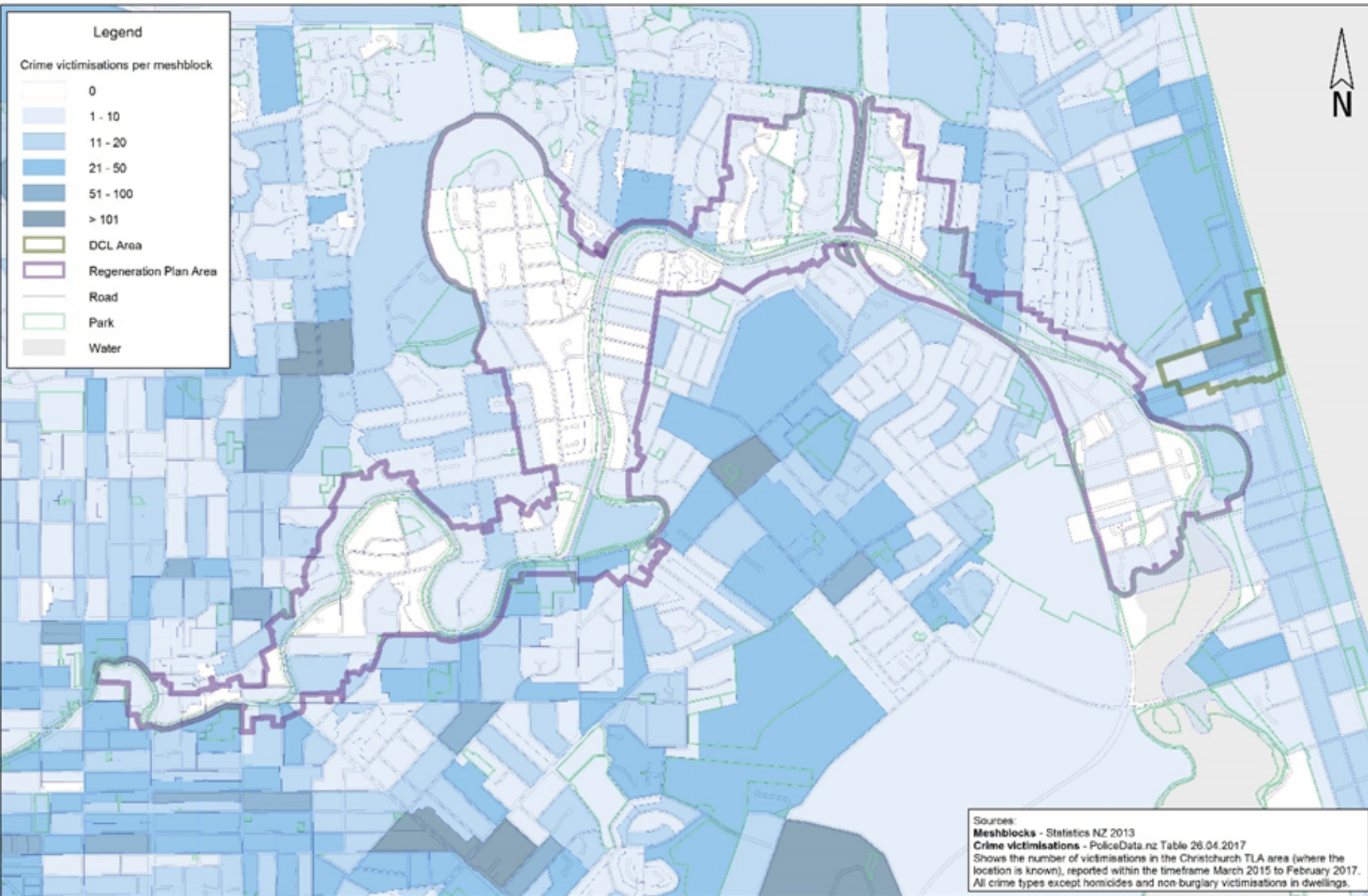
Connecting New Brighton's
Commercial Core:



3. Splash Park

Adventure Splash
 Main Pool
 Water Cannons
 Floor Jets
 Spinning Umbrellas
 Climbing Feature
 Toddler Swing
 Jet Saw Sdt
 Water Bucket
 and more.









Guidance: Safety of people and security of property will be improved through the provision of public space specifically for young people, to turn a potential deficit into a future positive. This can be supported in the following ways:

- An area of public space is set aside for young people. The space currently under consideration as an art park may be suitable, although further investigation will be required.
- The views, needs and wishes of young people from the east of Christchurch are fully considered early, and throughout design phases. Co-design is preferred to ensure that the space meets the needs of young people and a strong sense of positive ownership and custodianship is fostered.









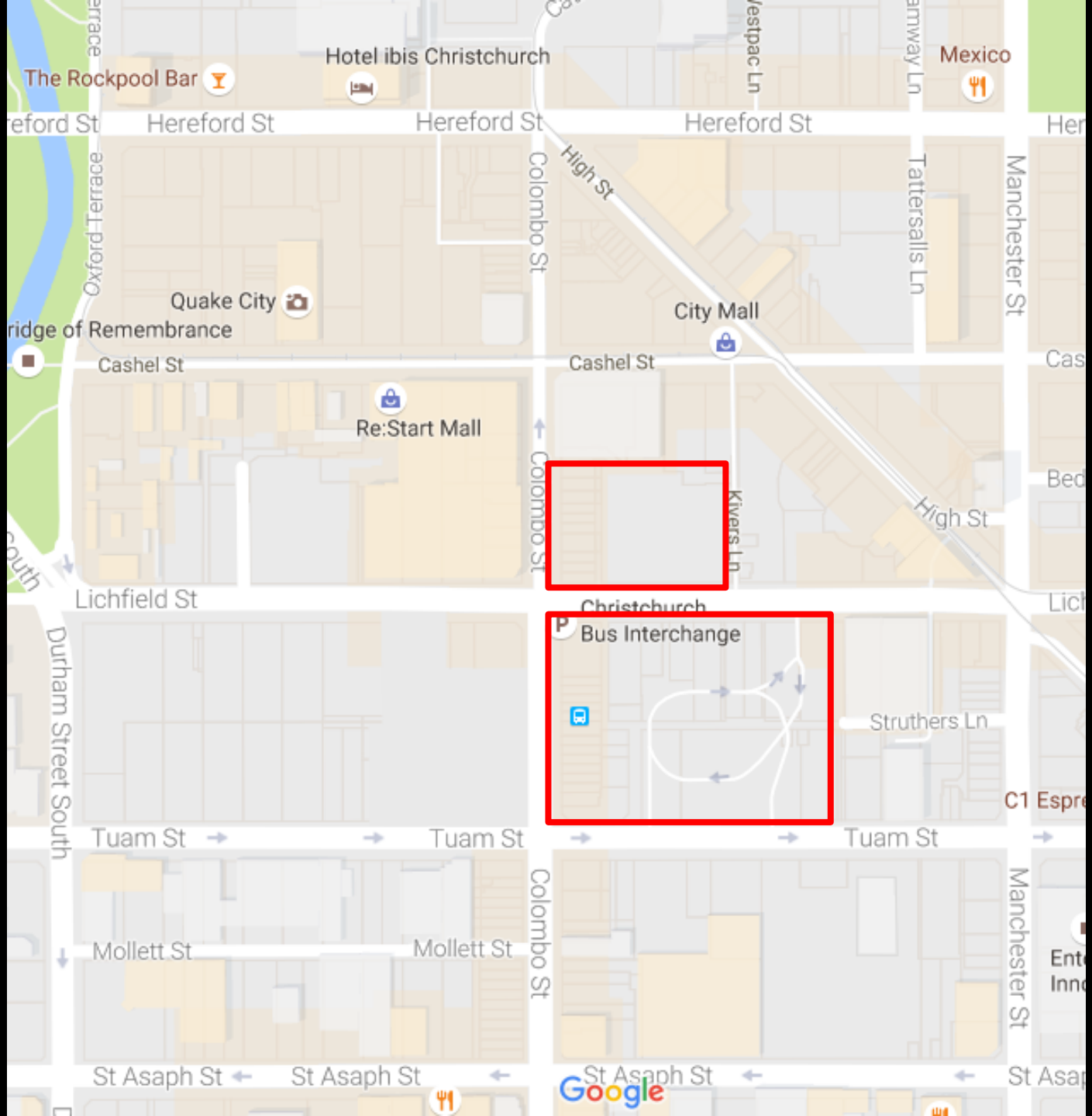
Toilets





Bicycle Park
Croydon





Police calls for service data

Police calls for service data

Bus Xchange

2009

173

Police calls for service data

Bus Xchange	2009	173
Bus Interchange	May 2015 to May 2016	40

Police calls for service data

Bus Xchange	2009	173
Bus Interchange	May 2015 to May 2016	40
Reduction in calls for service		77%

Police calls for service data

Bus Xchange	2009	173
Bus Interchange	May 2015 to May 2016	40
Reduction in calls for service		77%
Reduction adjusted for passenger numbers		70%

Type Code	Old Bus Exchange (1 Jan - 31 Dec 2009)	Cost per event	Total Cost	New Bus Exchange (25 May 2015 - 25 May 2016)	Cost per event	Total Cost
1510 - Serious Assaults	1	8910	8910	1	8910	8910
1640 - Minor Assaults	15	8910	133650	4	8910	35640
1710 - Intimidation/Threats	7	8910	62370	1	8910	8910
1840 - Harassment	1	8910	8910	0	8910	0
1C - Car/Person Acting Suspiciously	12	2,240	26880	3	2,240	6720
1F - Assist Fire/Ambulance/Traffic	0	2,240	0	1	2,240	2240
1G - Solvent Abuse	1	5,780	5780	0	5,780	0
1J - Juvenile Complaint	2	2,240	4480	3	2,240	6720
1K - Drunk Custody/Detox Centre	18	2,240	40320	5	2,240	11200
1M - Mental	2	2,240	4480	0	2,240	0
1U - Traffic Offending	0	2,240	0	0	2,240	0
1X - Attempted Suicide	4	2,240	8960	0	2,240	0
1Z - Other Incident	9	2,240	20160	0	2,240	0
2210 - Sexual Affronts	2	72,130	144260	0	72,130	0
2630 - Sexual Attacks	0	72,130	0	0	72,130	0
3210 - Drugs (Cannabis Only)	1	5,780	5780	0	5,780	0
3530 - Disorder	32	2,240	71680	8	2,240	17920
3910 - Liquor Offences	22	2,240	49280	0	2,240	0
3985 - Breach Of Local Council Liquor Ban	2	2,240	4480	1	2,240	2240
4320 - Theft Ex Shop	1	1,300	1300	1	1,300	1300
4370 - General Theft	3	1,300	3900	2	1,300	2600
5120 - Wilful Damage	5	2,160	10800	1	2,160	2160
5134 - Wilful Damage - Graffiti	5	2,160	10800	0	2,160	0
6110 - Trespass	22	2,240	49280	7	2,240	15680
6820 - Firearms Offences	2	2,240	4480	0	2,240	0
6D - Bail Breach	0	2,240	0	2	2,240	4480
NSEC - No Speech Emergency Call	4	2,240	8960	0	2,240	0
Total	173		689900	40		126720

\$689,900

\$126,720

WARNING

You are about to enter a science-free zone!!!

Cost / benefit

Cost / benefit

Cost of CPTED

\$2000

Cost / benefit

Cost of CPTED

\$2000

Cost saving @ 50%

\$391,797 (CPI adjusted)

Cost / benefit

Cost of CPTED

\$2000

Cost saving @ 50%

\$391,797 (CPI adjusted)

Cost / benefit

1 :195 per annum

Cost / benefit

Cost of CPTED

\$2000

Cost saving @ 50%

\$391,797 (CPI adjusted)

Cost / benefit

1 :195 per annum

Cost / benefit over 50 year life of building

1:9795

Cost / benefit

Cost of CPTED

\$2000

Cost saving @ 50%

\$391,797 (CPI adjusted)

Cost / benefit

1 :195 per annum

Cost / benefit over 50 year life of building

1:9795



WELCOME TO
RICCARTON
WEST

Zoele Silver



Sue Ramsay

sue.ramsay9@gmail.com