

Improving Disadvantaged Housing in Scandinavian Welfare Societies



International CPTED Association 2019- Urban Safety and Human Security
Cancun, Mexico, 29 August 2019,

Slightly Revised 30 September 2019

Bo Grönlund, architect & urban planner, emeritus KADK.DK
bgron@kadm.dk



On Immigration Related CPTED Works in Denmark and Sweden



I will not talk about migrant marches through Mexico, Trump's border wall or how to reduce mafia and gangs through legalising drugs.

What I will talk about are crime and fear of crime issues related to immigration issues in North Western Europe and how it is handled by crime prevention through urban design and planning (CP-UDP), as we say in Europe.

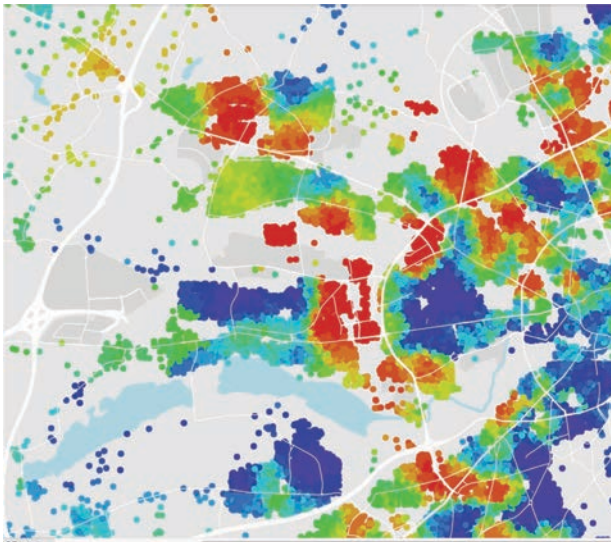
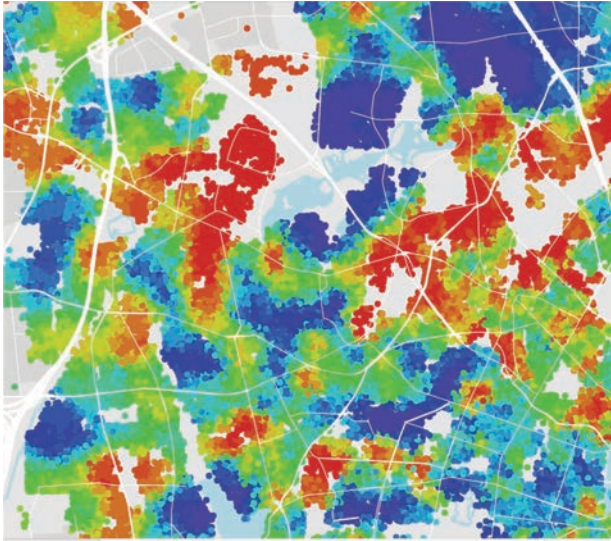
Depending on the situation with CPTED or CP-UDP you can do quick things like trimming vegetation or getting better burglary protection, you can add new safety improving construction which might take some years, or you can reconstruct whole city districts, which might take 10 to 25 years.

The situation might also be different in other ways: homogenous residential districts for the middle class or the upper classes, central city areas where anyone can come, or culturally un-homogenous residential areas for the less privileged and the immigrants.

I will talk about the most complex cases of migrant areas and the long term reconstruction of residential city districts.

These cases get further complicated in Sweden and Denmark through a general political correctness where it is difficult to handle cultural conflicts directly. This means there is a risk that CPTED or CP-UDP strategies might be involved in projects that goes too far concerning changes of the physical environment.

Problems to Be Covered in This Presentation



Segregation Copenhagen and Aarhus 2017, Dream 2019

1. Sweden and Denmark have immigration problems related to poor participation in the labour market, partly because of public welfare systems which provide almost everything for free. The crime rate is higher for people from the Middle East and Africa (MENA). The problems in Sweden are worse than in Denmark, because immigration is much larger.

2. Sweden and Denmark defines ghettos differently, partly because of this. Both are reluctant to touch issues related to clan cultures and religious fundamentalism. In the ghettos you are forced to live together independent of ethnicities, languages and other differences.

3. Residential segregation is strong and increasing. Large scale modernism in architecture and urban planning has made it worse. This way of building residential districts was not intended to be ghettos, but it happened quickly and increased with immigration - and then the flight of those who wanted and could get out.

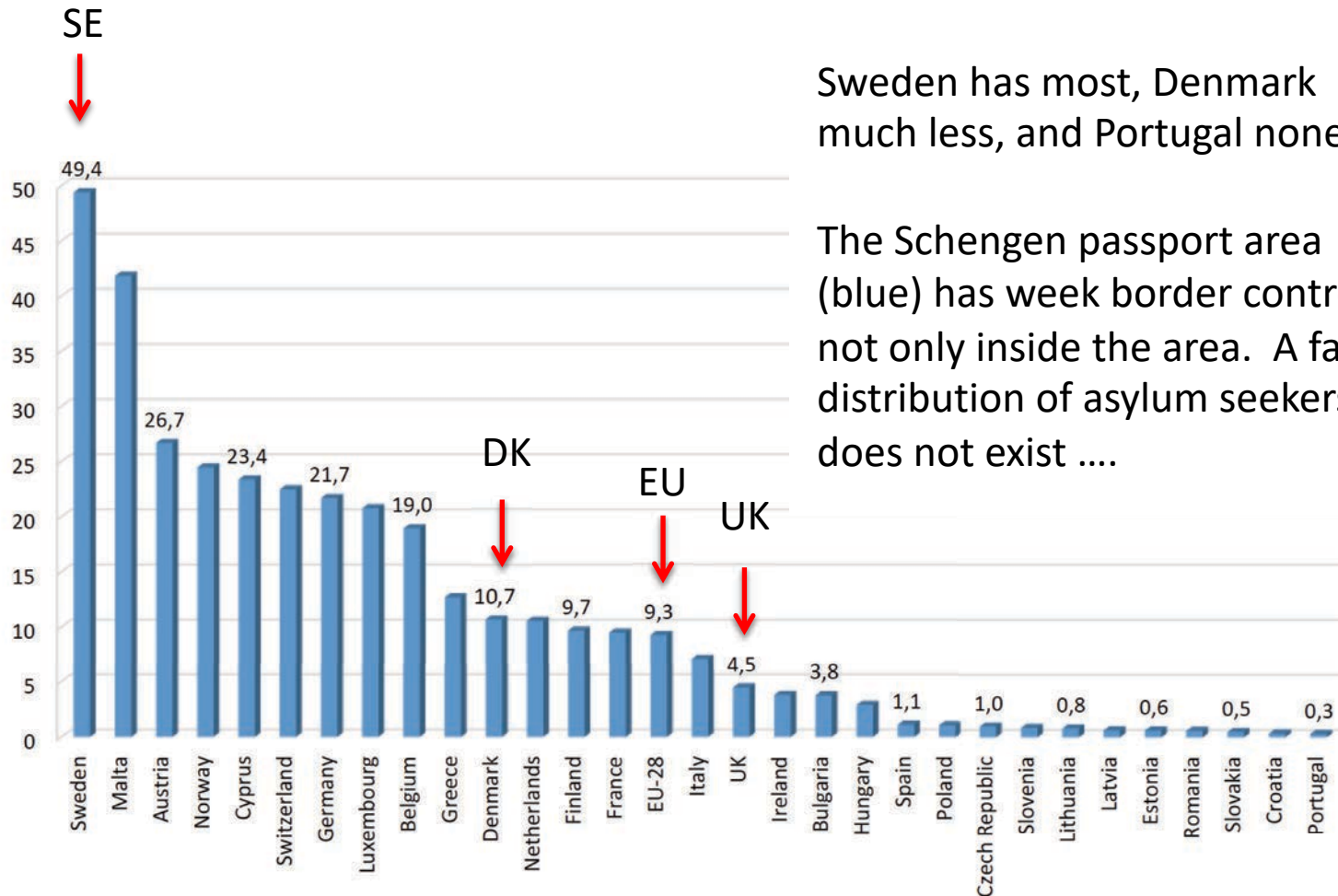
4. Järva - a Swedish BID solution (voluntary Business Improvement Districts) in a country with weak national funds for environment improvements in ghettos.

5. Tingbjerg and Gellerup – Danish improvements heavily funded by a National Social Housing Foundation (Landsbyggefonden) to which all social housing companies contribute as their original construction loans are payed back.

6. In every case, it is necessary to do a thorough analyses and work out effective strategies.

7. With long term strategies it is critical to stay focused through the whole process- It is easy to loose it with many parties involved, political elections and changes of staff through the years.

Asylum Immigration to Europe



Sweden has most, Denmark much less, and Portugal none..

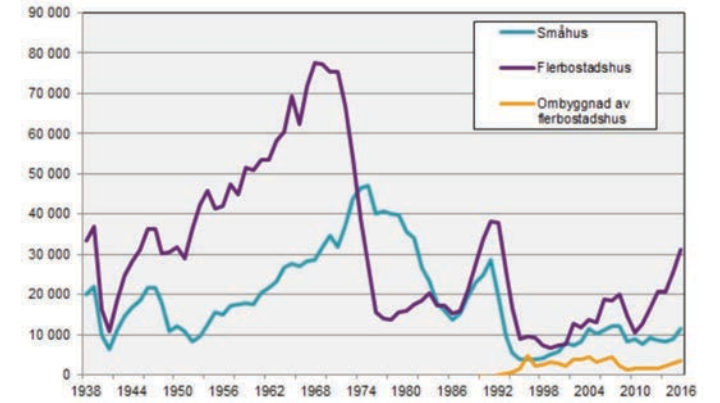
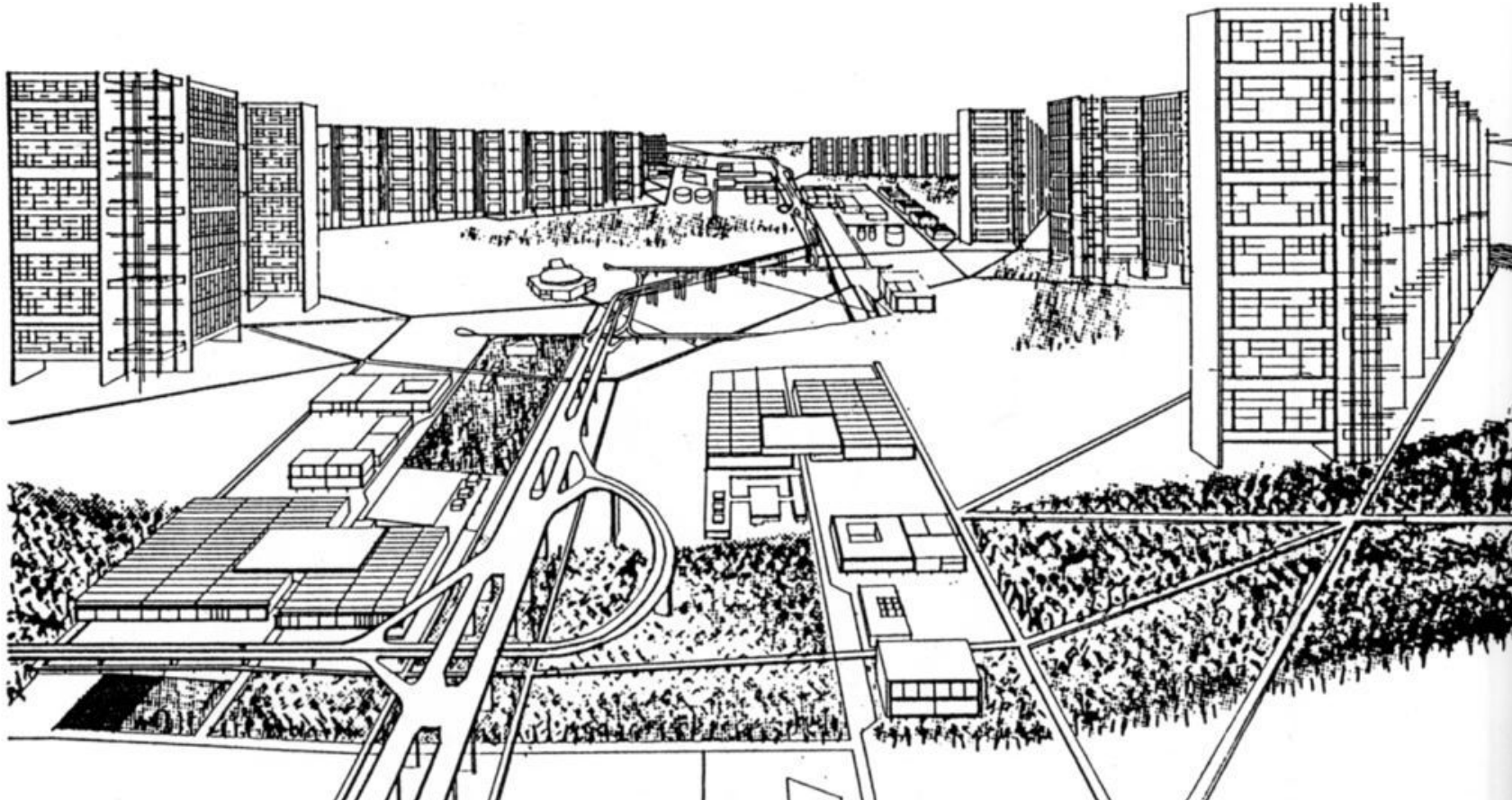
The Schengen passport area (blue) has week border controls, not only inside the area. A fair distribution of asylum seekers does not exist



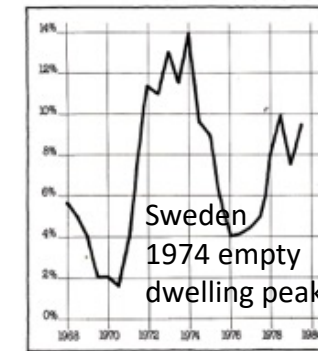
Granted asylum applications /1000 inhabitants, 2006-2017
Sweden 5,3 times more the EU average. (Source: Eurostat)

The low UK number is partly because the UK is outside Schengen – even before BREXIT...

Modernism - CIAM's Utopia



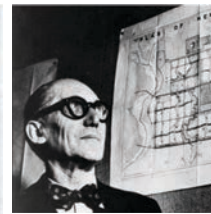
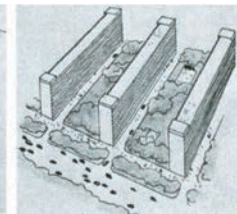
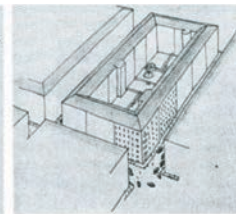
Swedish dwelling production 1955-2016
Multifamily violet, single family blue



Andel af tomme lejligheder i statsstøttet etagebyggeri i Sverige 1968-80. I 1974 var 28.000 boliger ikke udlejet.

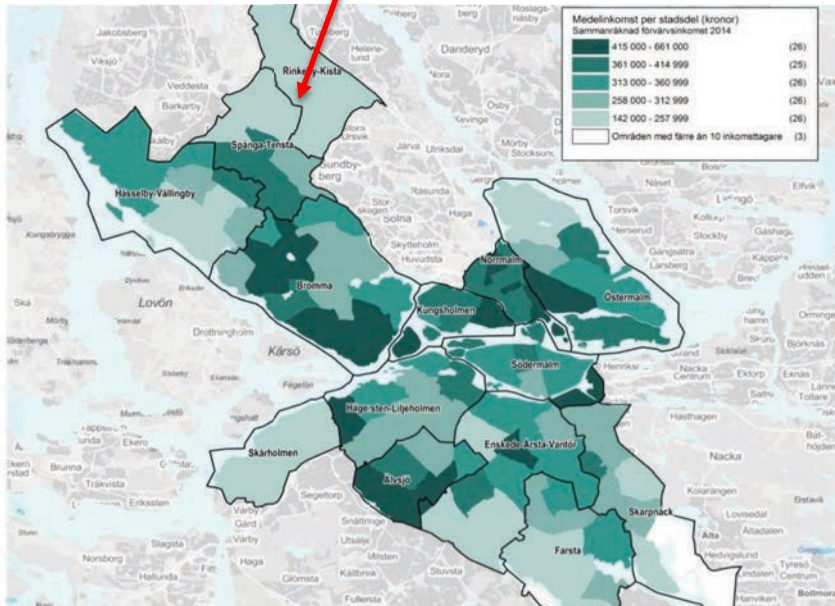


- CIAM's space + Mass industrialised housing
- The systematic opposition to the traditional city
- Result : Spatial segregation + social segregation
- Result 2: Crime and /or fear of crime



Residential Segregation – Stockholm Municipality, Sweden

Järva, low income

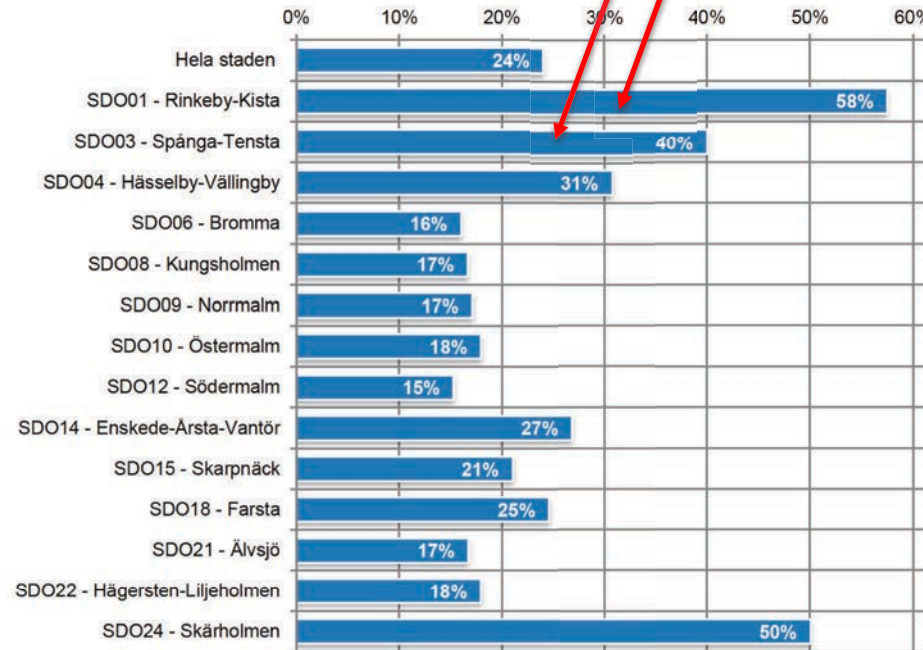


Källa: Sweco

In Stockholm dark green district are the richest, light green the poorest. (Mean income 2014, 20+ years of age)

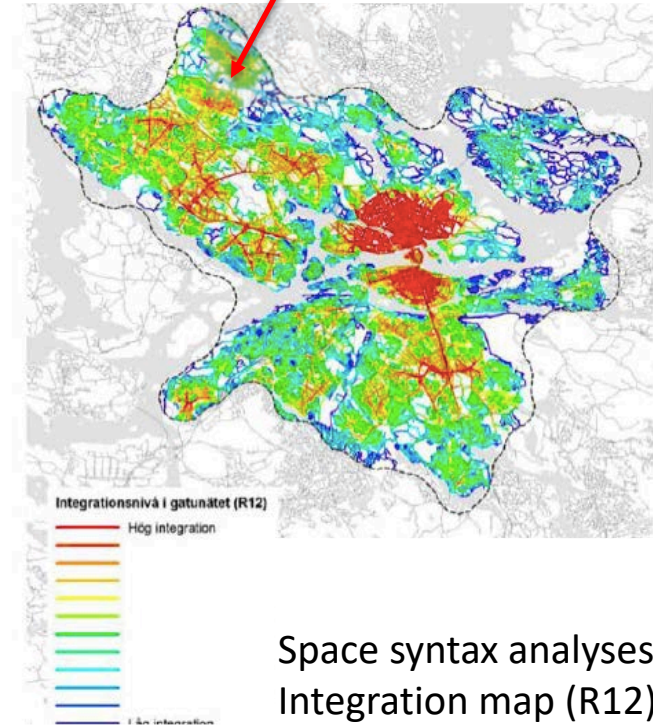
In Sweden and Denmark residential segregation is increased by rent subsidies for low income people only in rented apartments, not in owner occupied dwellings or condominiums.

Järva – split in 2 districts



Percentage born abroad 2016 - Järva North 58%
 If 2nd and 3rd generations were included numbers would be higher

Järva spatially Isolated



Space syntax analyses
 Integration map (R12)
 Source: Spacescape

Most dwellings for rent are in social housing, often built in large units.

Most important Architectural Firms involved in Tingbjerg and Gellerup:

Effekt:

<https://www.effekt.dk>
<https://www.effekt.dk/gel>
<https://www.effekt.dk/geto>

SLA:

<https://www.sla.dk/en/>
<https://www.sla.dk/en/projects/gellerup>

21 Photos by Bo Grönlund in this Powerpoint presentation:

Husby, Stockholm
Rinkeby, Stockholm
Tensta Stockholm,
Tingbjerg, Copenhagen
Gellerup-Toveshøj, Aarhus