A photograph of a city skyline at dusk or dawn, with silhouettes of skyscrapers against a dark sky. The foreground shows a residential or commercial building with some lights on.

SafeGrowth®: CPTED for 21st Century Cities

Dr. Tarah Hodgkinson
Griffith University, Australia
ICA Director at Large
SafeGrowth® Practitioner

CPTED Implementation

- The last ICA conference we spoke about the issues with implementation from our interviews with CPTED practitioners.
- These issues included:
 - Stakeholder buy in
 - Funding/budget
 - Policy and legislation
 - Relationships
 - Mixed teams and integration
 - Context and problem analysis

Stakeholder buy-in- need the right people involved who can get it approved in the end – the right councillor or funder

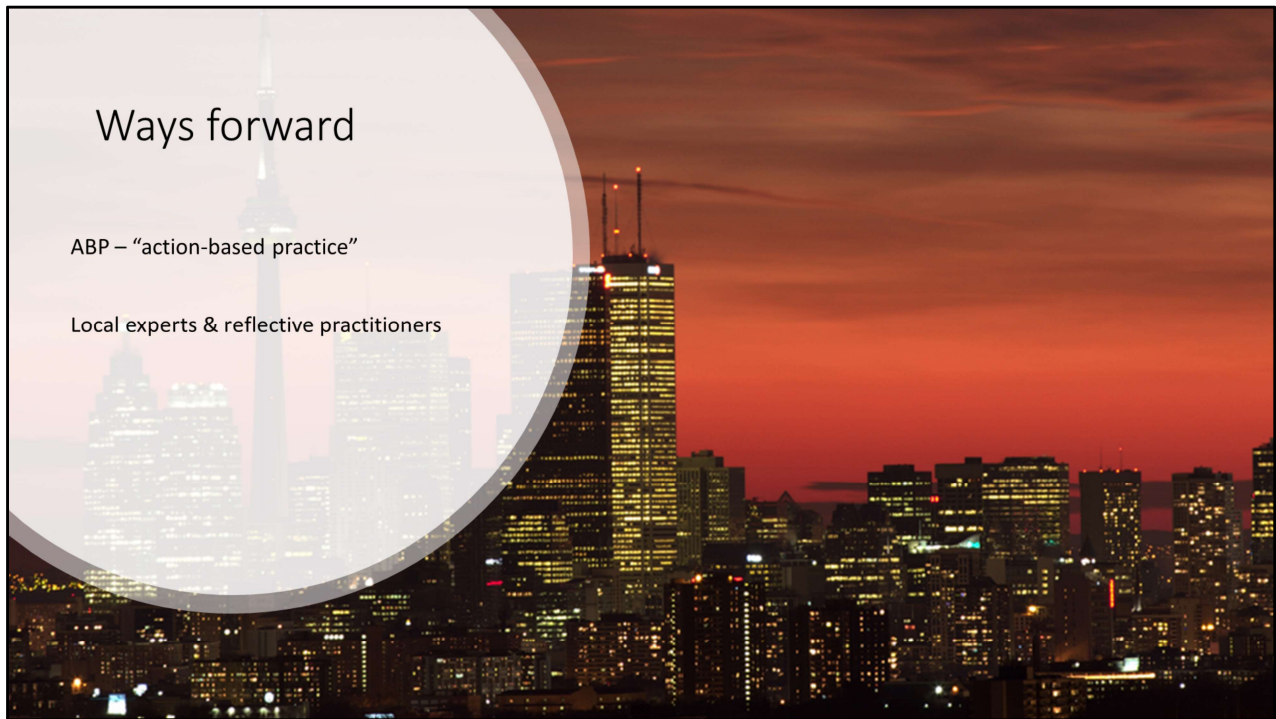
Funding budget – need to have the funding to implement changes – particularly physical ones (if you need more lighting, someone has to pay for it)

Policy – need good policy to start with, need to be able to get official documentation and work through the legislation

Relationships – have to be able to work together and trust each other and communicate well

Mixed teams and integration – having the right people in the right places – can't have all police dealing with an issue, nor can you have all architects

Context and Problem analysis – can't provide solutions to problems you don't understand

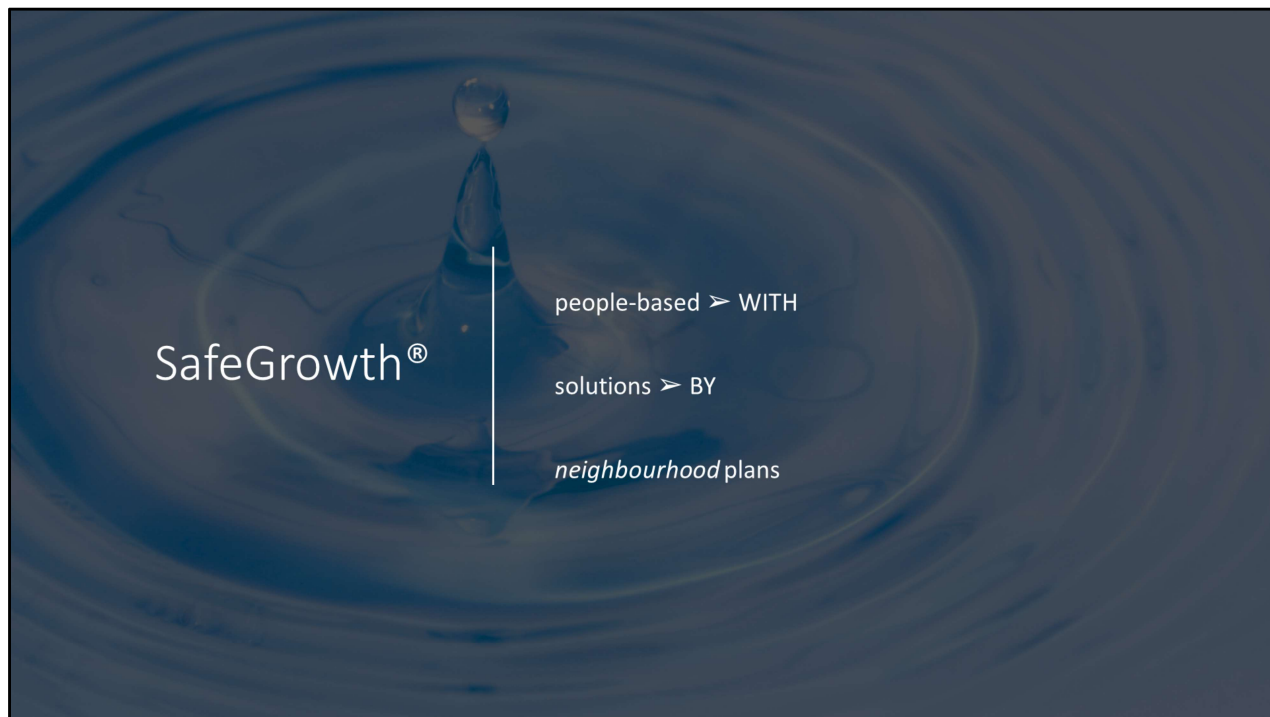


Ways forward

ABP – “action-based practice”

Local experts & reflective practitioners

Participatory action research acknowledges all actors as experts. The “expert” becomes a facilitator, helping participants to identify problems, use the best evidence available to build solutions and implement those solutions. Participants make up mixed teams with a range of expertise and roles in the neighbourhood who have a stake in creating change. The barriers to implementation are removed, because the participants are already imbedded in the local governance structure.



Definition and methodology

SafeGrowth is based in participatory action research and envisions neighbourhoods that are livable and safe.

SafeGrowth is a people-based program that works WITH neighbourhood safety stakeholders to create solutions to local problems BY these stakeholders.

SafeGrowth builds neighbourhood-level capacity, with precise and measurable neighbourhood plans, created by problem-solving mixed teams that create sustainable solutions.



SafeGrowth® and CPTED

- CPTED – To and For
- Need local skills and knowledge – with
- Common language = common understanding
- Local capacity building and local change

CPTED has traditionally been implemented by CPTED practitioners TO or FOR a community.

Alternatively, the SafeGrowth method seeks to build local skills and knowledge about CPTED, among other prevention and cohesion tactics, by working directly WITH local change agents.

SafeGrowth uses a common language of these tactics to build a common understanding among city workers, police, neighbourhood groups and other neighbourhood safety stakeholders, which contributes to relationship building.

These change agents initiate and implement tactics and programs themselves with other members of the community.



Thank you.

Dr. Tarah Hodgkinson

t.hodgkinson@griffith.edu.au