



THE GLOBAL PROJECT
Sociable City Plan

DUBLIN, IRELAND
TORONTO, CANADA
CANCÚN, MEXICO

INTERNATIONAL CPTED ASSOCIATION

A NEW PARADIGM

CRIME *(AND DISORDER)* PREVENTION THROUGH ENVIRONMENTAL DESIGN
IN SOCIAL DISTRICTS

RESPONSIBLE HOSPITALITY INSTITUTE

831.469.3396

RHIweb.org



TO PRESERVE AND ADVOCATE FOR THE SOCIAL, CULTURAL AND ECONOMIC VALUE OF DINING AND ENTERTAINMENT



IMPULSAR Y PRESERVAR EL VALOR SOCIAL, CULTURAL Y ECONÓMICO DE LA GASTRONOMÍA Y EL ENTRETENIMIENTO DE LA VIDA EN LA NOCHE

TO IMPROVE THE ALLOCATION OF RESOURCES AND UPDATES TO LEGISLATION



APORTAR Y ESTABLECER LOS MECANISMOS ADMINISTRATIVOS, OPERATIVOS Y NORMATIVOS QUE PERMITAN ALCANZAR LOS ESTÁNDARES DE DESARROLLO COMPETITIVO DE LA VIDA EN LA NOCHE

TO ENSURE PUBLIC SAFETY TO REDUCE CRIME, HARM AND DISORDER WHILE MINIMIZING QUALITY OF LIFE IMPACTS



GARANTIZAR LA SEGURIDAD PÚBLICA LA CULTURA DE LA LEGALIDAD, REDUCIR EL CRIMEN, EL DAÑO Y SUS IMPACTOS EN LA CALIDAD DE VIDA

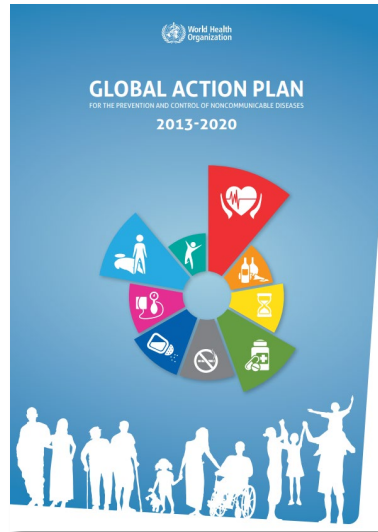
TO MAINTAIN COMMUNICATION BETWEEN GOVERNMENT AND BUSINESSES REGARDING POLICY AND PROCEDURES



ESTRECHAR LA COMUNICACIÓN ENTRE GOBIERNO, SOCIEDAD CIVIL Y VISITANTES.



**World Health
Organization**



Action Plan

- In 2013, WHO released a Global Action Plan for the prevention and control of Non-Communicable Diseases between 2013-2020
- Among the 9 Voluntary Global Targets:



At least **10%** relative reduction in the harmful use of alcohol, as appropriate, within the national context.

Objectives

- Raise the priority and awareness
- Strengthen capacity, leadership, governance and partnerships
- Reduce modifiable risk factors
- Strengthen health systems
- Promote and support research and development of prevention
- Monitor trends and determinants to evaluate progress in prevention



RHI's GLOBAL PROJECT
Sociable City Plan

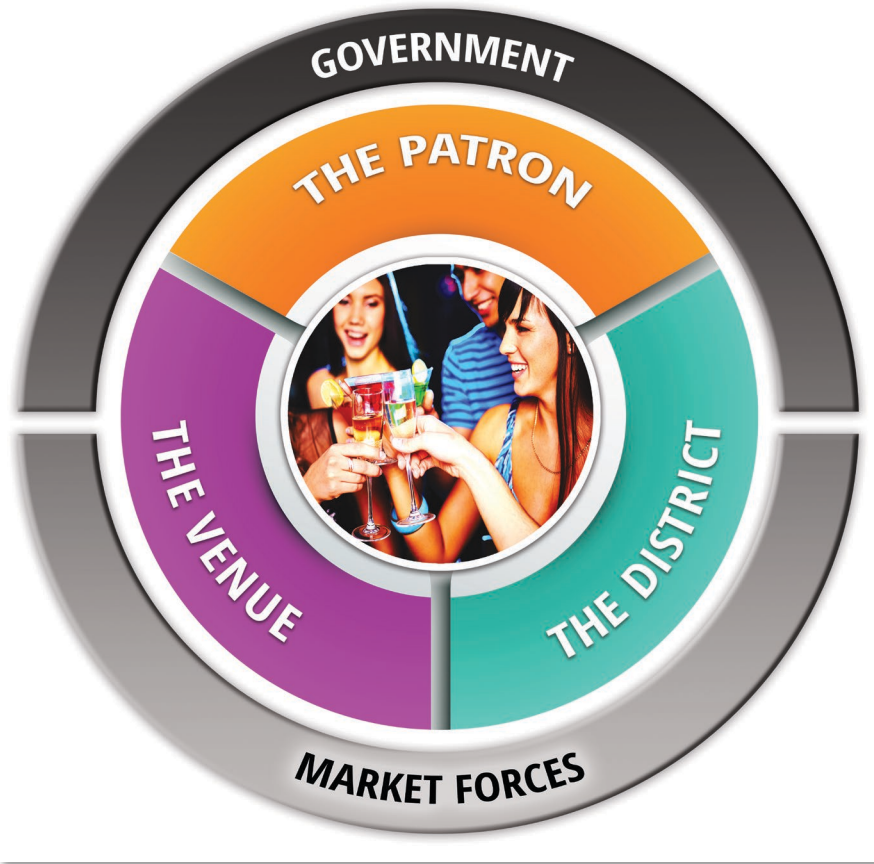
Global Project Directives

- Identify indicators for alcohol-related harm in a social district
- Identify factors that contribute to high-risk drinking
- Establish a formal process for on-going organization of data from multiple sources
- Measure change in a social district

Directivas del Proyecto Global

- Identificar indicadores para daños relacionados con el alcohol en una zona social
- Identificar factores que contribuyan al consumo de alto riesgo
- Establecer un proceso formal para la organización continua de información de múltiples fuentes
- Medir los cambios en una zona social

WHAT FACTORS INFLUENCE SAFETY IN NIGHTLIFE?



A new, holistic paradigm is needed to:

- Assess high risk drinking in a district setting
- Evaluate a broad context in which alcohol consumption takes place
- Monitor change

Organized factors into 5 categories:

1. Market Forces
2. The Patron
3. The Venue
4. The District
5. Government

Historically, each of these factors were addressed individually. Our approach considers them as part of a holistic model.

ADDITIONAL INFORMATION



Jim Peters
President
(831) 438-1404
Jim@RHIweb.org



Alicia Scholer
Vice President
(831) 469-3396 ext 4#
Alicia@RHIweb.org



Claudia R Guillemot
Secretaria Técnica
Mesa de Seguridad y Justicia de
Cancún e Isla Mujeres
52 1 998 204 4955
msjqroo@gmail.com



THE RESPONSIBLE HOSPITALITY INSTITUTE (RHI) coordinated the Global City Social District Assessment and Evaluation. Funding for RHI's services was provided by **Diageo**, a leading global spirits and beer company, Diageo is committed to preventing and reducing alcohol abuse around the world. The company's **DRINKiQ** website was specifically created to cover all aspects of alcohol and give consumers the tools to make more informed choices about drinking, including the decision not to drink.