

METODOLOGÍA CPTED

PBK
PUBLIKA
CONSULTING



PREVENCIÓN DEL DELITO POR MEDIO DEL DISEÑO AMBIENTAL (CPTED) PUBLIKA CONSULTING

www.cpted.net
cpted-region.org
www.pbk.cl

Macarena Rau Vargas
Presidenta Internacional ICA
mrau@pbk.cl

PBK Consultores (www.pbk.cl)

- *Somos una empresa líder en **consultoría medioambiental y urbana** con proyectos a nivel mundial (www.pbk.cl) que buscan el logro de medio ambientes sostenibles, vibrantes y seguros.*
- *Contamos con una cartera de clientes de primer nivel tales como: **El Banco Mundial, El Banco Interamericano del Desarrollo, Diageo, RHI, USAID**, entre otros.*
- *Asesoramos en la **actualización y formulación de políticas públicas de seguridad y urbanismo**, para gobiernos locales y centrales tales como: **Municipalidad de Puente Alto, Municipalidad de Coyhaique, Municipalidad de Quito, Municipalidad de Monterrey, Municipalidad de Toronto, Municipalidad de Tegucigalpa, San Pedro Sula y Tela** entre otros.*
- *Creemos en los **equipos interdisciplinarios** para ofrecer proyectos integrales de altos estándares de calidad.*



PBK Consultores - Brazo armado de CPTED en la Región LAC



CPTED Internacional



Macarena Rau Vargas
Presidenta ICA
Directora Ejecutiva PBK
mrau@pbk.cl



Melissa Valdez
Directora de Proyectos PBK
melissamvaldez@pbk.cl



DR. Tim Pascoe
Dr. Criminología. Asesor.
tpascoe@pbk.cl



Robert Stephens
Asesor Experto en CPTED
rstephens@pbk.cl

PBK PUBLIKA
CONSULTING



Isamar Quiroga
Asesora en Defensa



Marcos Fuente
Asesor Metodológico



Víctor Carrasco
Asesor Estadístico

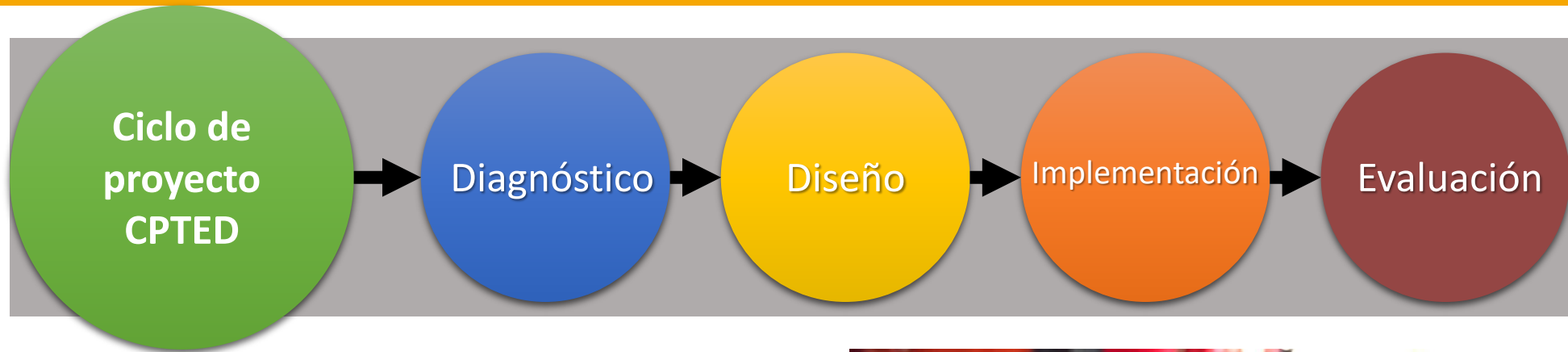


Oswaldo Fréitez
Asesor E-Learning



Julia Carreño
Asesora Territorial

Ciclo de proyecto – Aplicación de CPTED



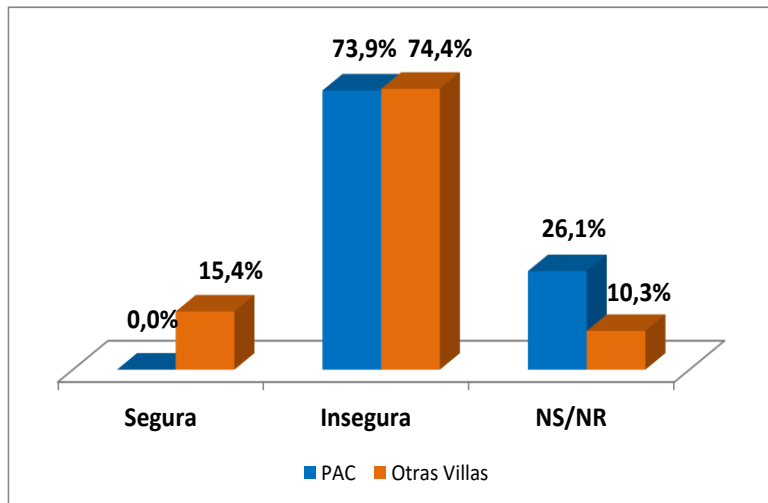
⇒ CPTED, utiliza los conceptos de los principios para la aplicación de distintas estrategias centradas en intervenir o modificar las condiciones relacionadas con el espacio físico, dentro del que se produce el delito.



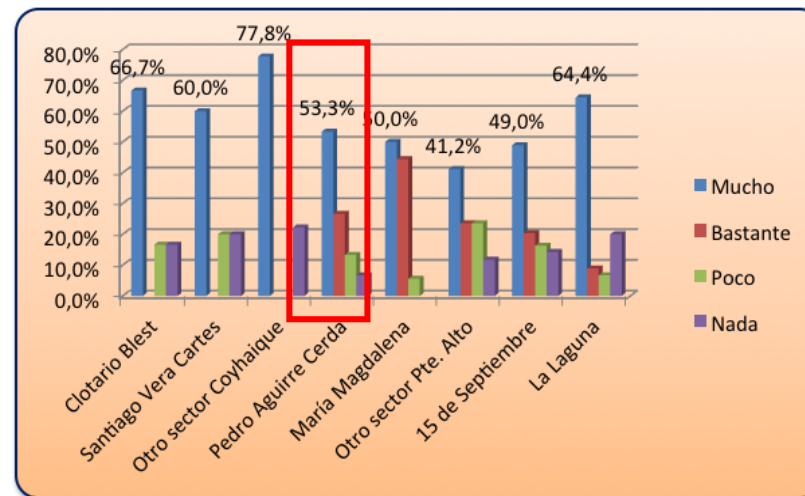
⇒ La aplicación de estas estrategias integran herramientas que se aplican de manera comunitaria y que cumplen el objetivo de cohesionar a la comunidad.



CASOS DE EXITO CPTED Evaluación de proyecto CPTED – Puente Alto 2015-2018



PERCEPCIÓN DE TEMOR
Estudio de Evaluación en Puente Alto,
Septiembre 2016



PERCEPCIÓN DE TEMOR
Estudio de Evaluación en Puente Alto,
Septiembre 2017

Posterior a la intervención con luminarias y alarmas del año 2017, se registra una percepción de temor de 53,3%, representando una baja de 20,6% respecto a la medición inicial de 2016 que fue de 73,9% en PAC.





Journal of Applied Security Research



JOURNAL OF APPLIED SECURITY RESEARCH
2018, VOL. 13, NO. 4, 437-454
<https://doi.org/10.1080/19361610.2018.1498254>



ISSN: 1936-1610 (Print) 1936-1629 (Online) Journal homepage: <https://www.tandfonline.com/loi/wasr20>

Impact Evaluation of Situational Prevention Strategies and CPTED (Crime Prevention through Environmental Design) in Vulnerable Neighborhoods in Latin America

Macarena Rau V, Ivan Cartes, Francisco Gatica & Tim Pascoe

To cite this article: Macarena Rau V, Ivan Cartes, Francisco Gatica & Tim Pascoe (2018) Impact Evaluation of Situational Prevention Strategies and CPTED (Crime Prevention through Environmental Design) in Vulnerable Neighborhoods in Latin America, Journal of Applied Security Research, 13:4, 437-454, DOI: [10.1080/19361610.2018.1498254](https://doi.org/10.1080/19361610.2018.1498254)

To link to this article: <https://doi.org/10.1080/19361610.2018.1498254>



Published online: 21 May 2019.



Submit your article to this journal [↗](#)



View Crossmark data [↗](#)

Impact Evaluation of Situational Prevention Strategies and CPTED (Crime Prevention through Environmental Design) in Vulnerable Neighborhoods in Latin America

Macarena Rau^a, Ivan Cartes^b, Francisco Gatica^c, and Tim Pascoe^d

^aUniversidad del Bío Bío (rau, cartes & gatica) Cranfield University (Pascoe); ^bUrban and Design Planning from Nottingham; ^cEconomy and Innovation Management from Universidad Complutense de Madrid; ^dCriminology from Cranfield University in England

ABSTRACT

Latin America is the most criminogenic region of the world from the perspective of murder according to studies by international agencies. This problem affects phenomena such as drug trafficking and organized crime among others. Since the year 2000, interventions in Latin America to reduce crime and fear of crime, based on Situational prevention strategies and Crime Prevention through Environmental Design (CPTED) modifications to the urban environment as well as the social network of certain areas have been implemented. However there is no impact assessment model of such interventions. This research advances the development of a model to measure the impact of Situational and CPTED prevention strategies in highly vulnerable neighborhoods in Latin America and evidence it with early case studies.

KEYWORDS

Urban security; drug trafficking; robbery; situational prevention; CPTED; Latin America; local government

INTRODUCTION

Urban Safety has become a priority issue on the public agenda of various countries in Latin America in the last decade, especially with regard to rising violent crime (Vilalta Perdomo, Castillo, & Torres, 2016). Crime prevention aims to reduce the environmental and social factors of risk that cause criminal behavior and promote factors that protect against participation in antisocial or criminal activities, before these behaviors become apparent. While often confused with social policies in general, crime prevention is distinguished from those that are not universally applied, but includes actions targeted at groups of people and territories that are particularly vulnerable. It aims to both focus on behaviors associated with crime and/or locate them spatially and suggest interventions.

The homicide rate is the most widely used internationally indicator to compare levels of crime in countries around the world. Although the Latin America and the Caribbean (LAC) has only 8% of the global population, it